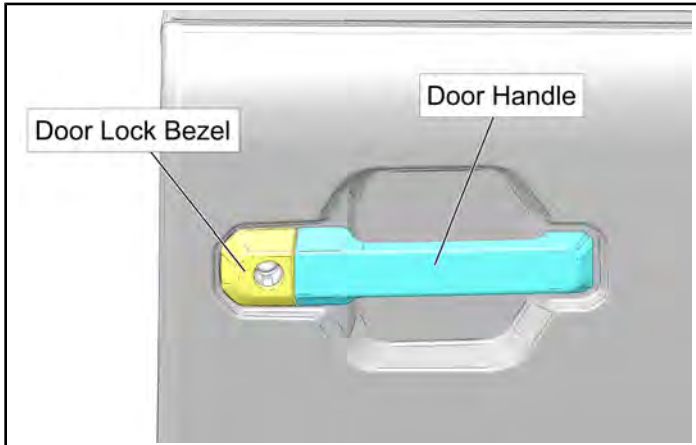


RANGER XD 1500 DOOR HANDLE VERIFICATION INSTRUCTIONS

COMPONENTS

Before you begin, familiarize yourself with the components of the outer door handle.



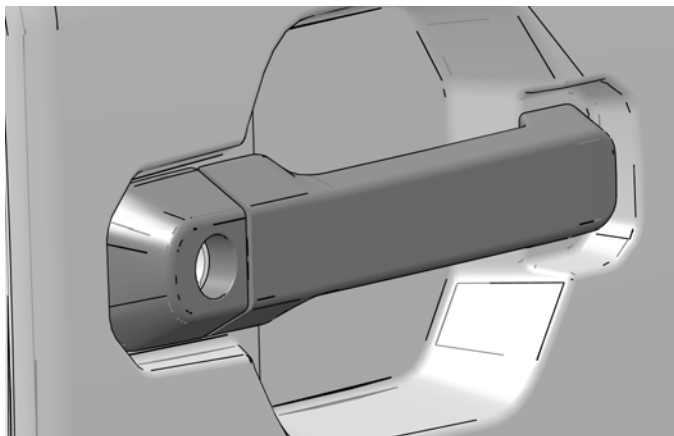
VEHICLE PREPARATION

1. Park vehicle on a flat surface.
2. Shift vehicle into PARK.
3. Turn key to OFF position and remove key.

INSPECTION

1. From outside the vehicle, use the outer door handle to open the door. Release the outer door handle.
2. After releasing the outer door handle, inspect the resting position of the outer door handle.
 - When operating the door handle, the handle should travel smoothly. Once the door handle is released, the handle must return to rest flush with the door lock bezel without you having to push it in to place.
 - Once the door handle is flush, there should be a gap approximately the thickness of a credit card between the door lock bezel and the end of the door handle.

The door handle should look like this:



The door handle should NOT look like this:



3. While sitting in the vehicle with the doors closed, and before driving the vehicle, ensure that the outer door handle is flush with the door lock bezel. This is most easily done by reaching through the open window and feeling the door handle.

IMPORTANT

If the door handle does not function properly from the above inspection, the vehicle must not be driven until the permanent repair solution is available.

4. As you continue to operate the vehicle, you must:
 - Confirm your outer door handles are functioning and returning properly and continue to do so as your vehicle doors are used.
 - Follow the **Safety - Owner Requirements** section of your owner's manual (including helmet, proper protective garments, and seatbelt use)
5. Please watch for a follow-up communication from Polaris regarding permanent repair details. We expect for a permanent repair to be communicated in November 2024.