

POLY WINDSHIELD KIT



P/N 2881110

APPLICATION

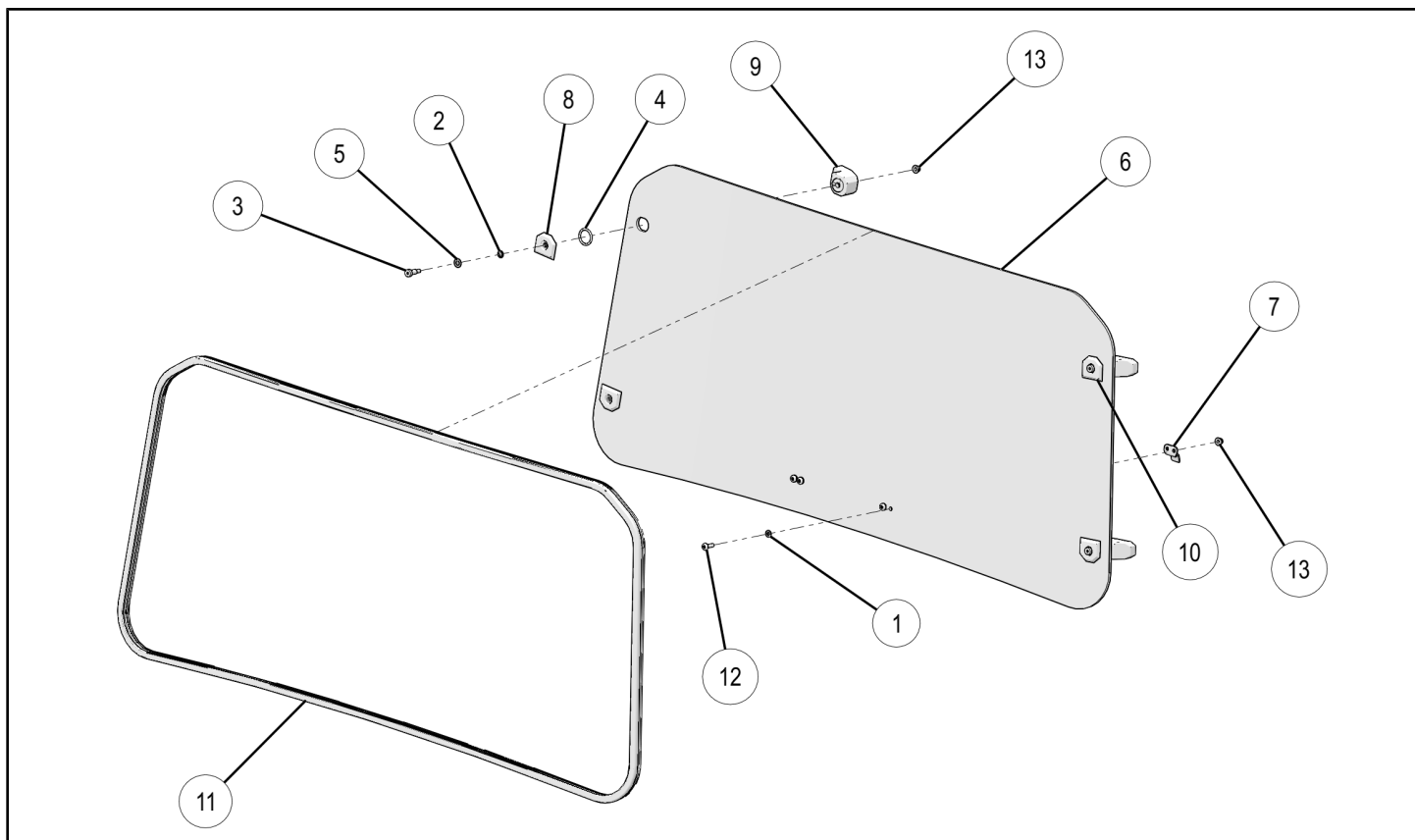
Verify accessory fitment at Polaris.com.

BEFORE YOU BEGIN

Read these instructions and check to be sure all parts and tools are accounted for. Please retain these installation instructions for future reference and parts ordering information.

KIT CONTENTS

This Kit includes:



REF	QTY	PART DESCRIPTION	PART NUMBER
1*	4	Washer - 6.0 X 12 X 1.6	-
2*	4	Washer, Wave - 8.13 X 12.7 X 0.635	-
3*	4	Bolt, Shoulder, M8 - 16, M6 X 1.0	-
4*	4	O-Ring - 25 X 3.0	-
5*	4	Washer - 8.40 X 16 X 0.8	-
6	1	Poly Windshield	2635891
7*	2	Bracket	5259092
8*	2	Base, RH	5451908

REF	QTY	PART DESCRIPTION	PART NUMBER
9*	4	Handle	5452531
10*	2	Base, LH	5452532
11	1	Seal	5522139
12*	4	Screw, Torx® - M6 X 1.0 X 20	7518546
13*	8	Nut, Hex Flange, M6 X 1.0	7547453
	1	Instructions	9926168

Items marked (*) are included in Hardware Kit PN 2205985.

TOOLS REQUIRED

- Safety Glasses
- Screwdriver, Slotted
- Utility Knife or Other Cutting Tool

IMPORTANT

Your POLY WINDSHIELD KIT is exclusively designed for your vehicle. Please read the installation instructions thoroughly before beginning. Installation is easier if the vehicle is clean and free of debris. For your safety, and to ensure a satisfactory installation, perform all installation steps correctly in the sequence shown.

ASSEMBLY TIME

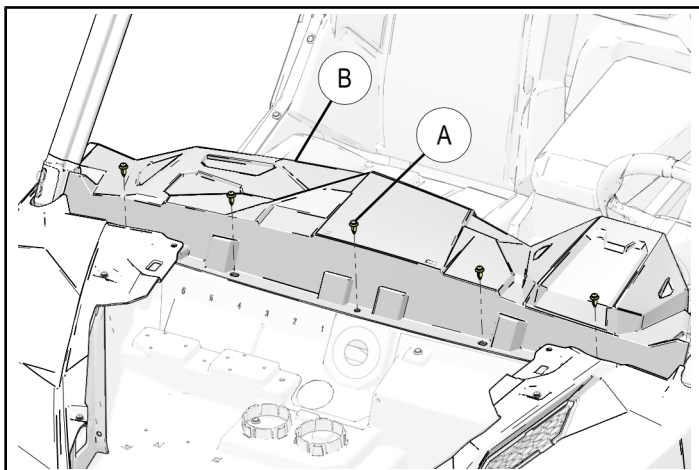
Approximately 25 minutes

INSTALLATION INSTRUCTIONS

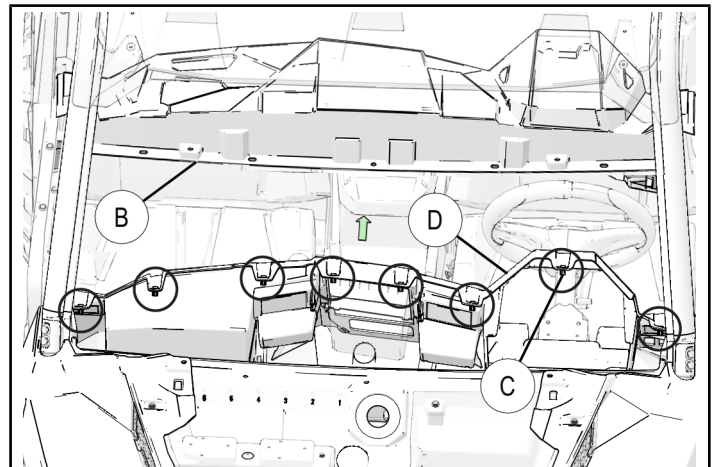
1. Place vehicle in "PARK". Turn key to "OFF" position and remove from vehicle.
2. Prepare upper dash panel
 - a. Remove hood.
 - b. Remove five plastic push rivets (A) from forward side of upper dash panel (B) as shown.

NOTE

Push rivets can be removed by prying up center pin with slotted screwdriver (or equivalent).



- c. Slide upper dash panel (B) to rear, disengaging eight spring clips (C) retaining upper dash panel to main dash panel (D) as shown.

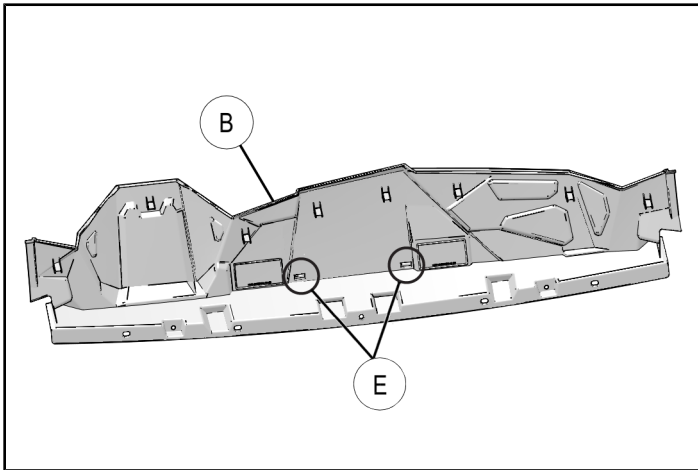


- d. Turn upper dash panel (B) upside down and place on protective surface.

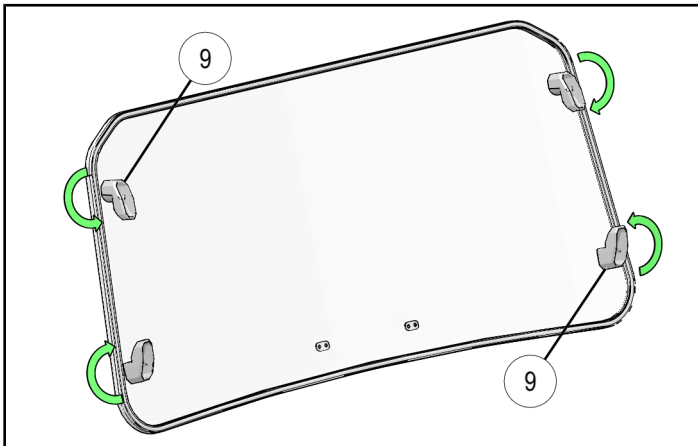
- e. Using knife (or equivalent) carefully cut two rectangular slots (E) in upper dash panel (B) as shown.

NOTE

Cutting locations are marked in panel. Slots will accommodate brackets ⑦.



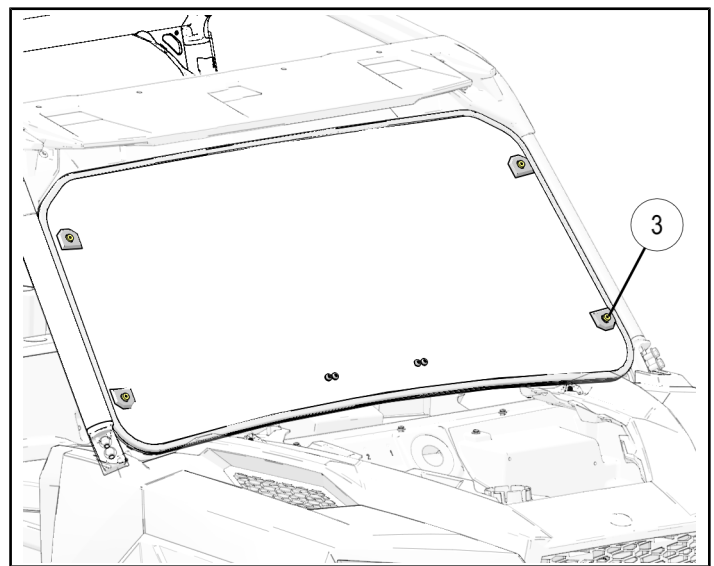
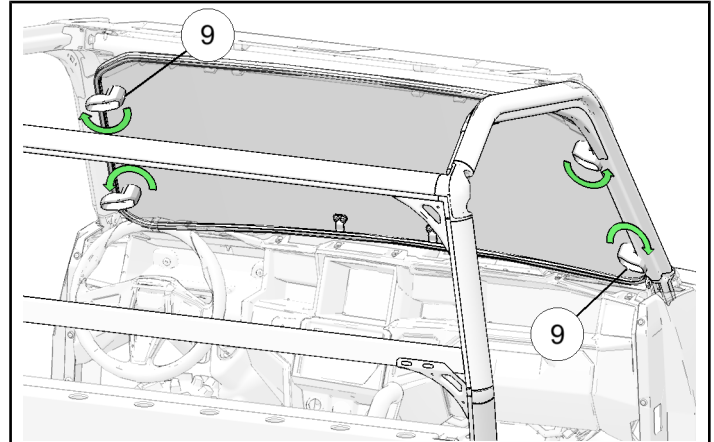
- f. Reinstall upper dash panel (B) by reversing previous steps.
- g. Reinstall hood.
3. Turn four handles ⑨ so they are in unlocked position (parallel with sides of windshield) as shown.



4. Install windshield ⑥ by inserting brackets ⑦ into newly cut slots (E) as shown. Pivot windshield into ROPS, then turn handles ⑨ to locked position (perpendicular to sides of windshield) as shown.

NOTE

Tighten bolts ③ as required to achieve desired level of handle resistance.



⚠ WARNING

Do NOT trailer vehicle facing rearward with windshield installed. Airflow may cause windshield to separate from vehicle, resulting in an accident and severe injury or death. Remove windshield or transport vehicle in enclosed trailer.