

# FLIP POLY WINDSHIELD KIT



**P/N 2882443**

## APPLICATION

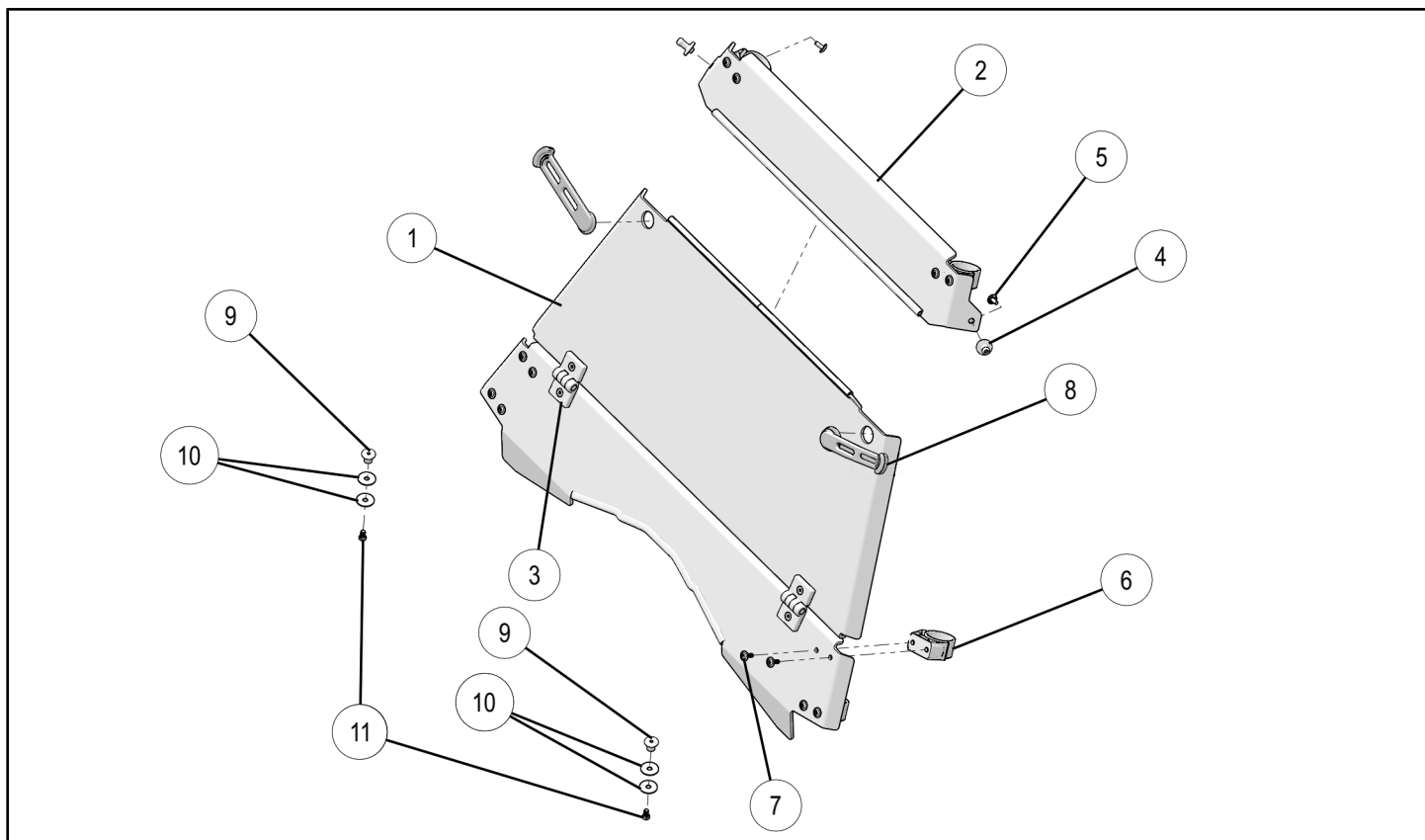
Verify accessory fitment at [Polaris.com](http://Polaris.com).

## BEFORE YOU BEGIN

Read these instructions and check to be sure all parts and tools are accounted for. Please retain these installation instructions for future reference and parts ordering information.

## KIT CONTENTS

This Kit includes:



REF	QTY	PART DESCRIPTION	PART NUMBER
1	1	Poly Windshield, Flip	-
2	1	Visor, Windshield	-
3*	2	Hinge, Butterfly (includes associated hardware)	-
4*	2	Ball Stud, Visor	-
5*	2	Torx® Screw	-
6**	6	Clamp	-
7**	12	Screw, Button Head	-
8*	2	Bumper Strap, Rubber	-

REF	QTY	PART DESCRIPTION	PART NUMBER
9*	2	Spacer	-
10*	4	Washer	-
11*	2	Screw	-
	1	Instructions	9927719

Items marked (\*) are included in Hardware Kit PN 2206600.

Items marked (\*\*) are included in Clamp Kit PN 2878747.

## TOOLS REQUIRED

- Safety Glasses
- Socket Set, Torx®
- Metric Wrench Set
- Metric Wrench Set
- Torque Wrench
- Drill and 1/4" or 7mm Drill Bit

## IMPORTANT

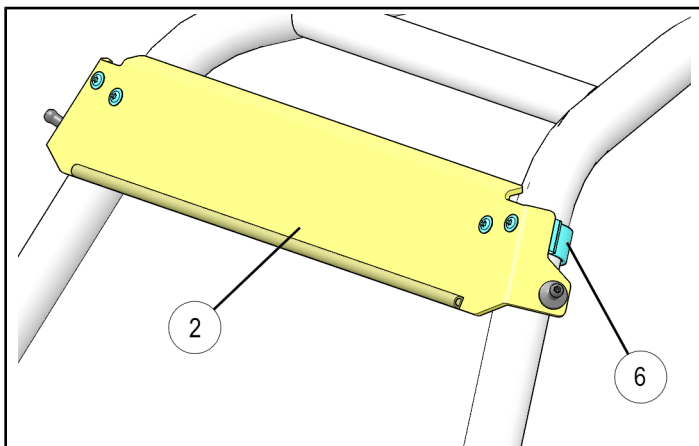
Your FLIP POLY WINDSHIELD KIT is exclusively designed for your vehicle. Please read the installation instructions thoroughly before beginning. Installation is easier if the vehicle is clean and free of debris. For your safety, and to ensure a satisfactory installation, perform all installation steps correctly in the sequence shown.

## ASSEMBLY TIME

Approximately 30 minutes

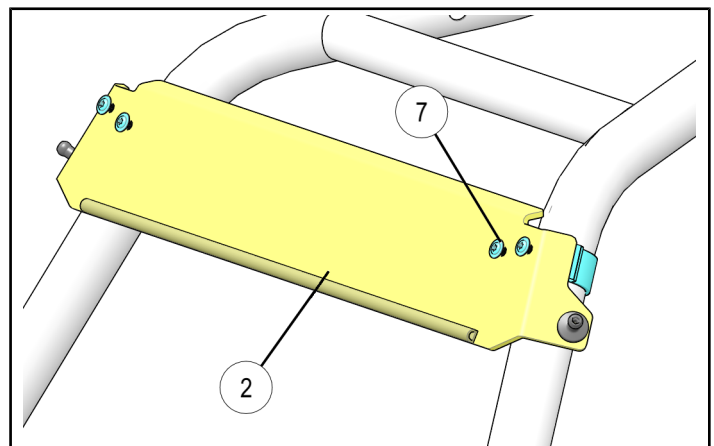
## INSTALLATION INSTRUCTIONS

1. Shift vehicle transmission into "PARK". Turn key to "OFF" position and remove from vehicle.
2. Place pre-assembled windshield visor ② onto ROPS using clamps ⑥. Don't fully snap clamps into position.

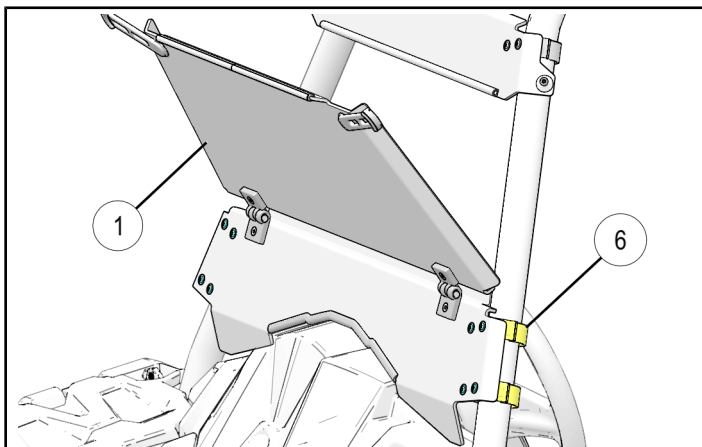


### TIP

If there is any difficulty installing the windshield visor ②, loosen the screws ⑦ to allow for easier fitment onto ROPS.

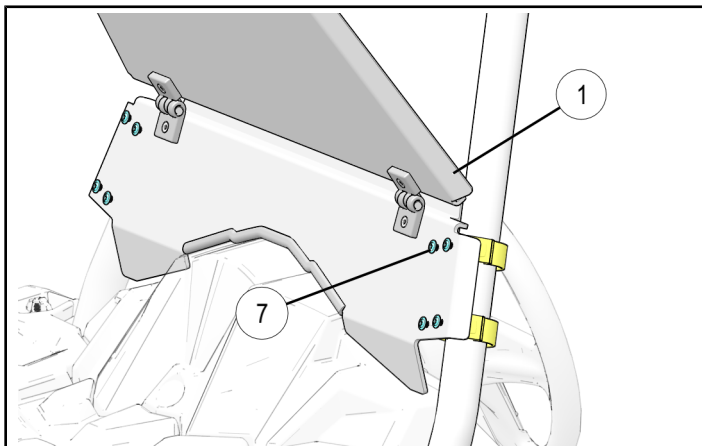


3. Place lower part of pre-assembled windshield ① onto ROPS using clamps ⑥. Allow trim to seat fully onto the dash as shown. Snap the clamps ⑥ into position.

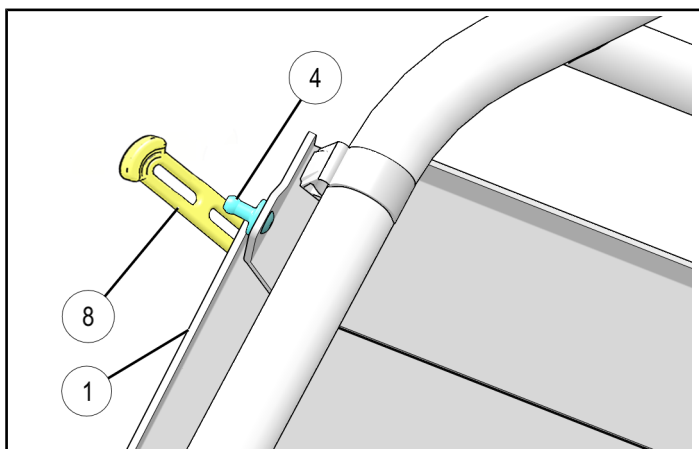
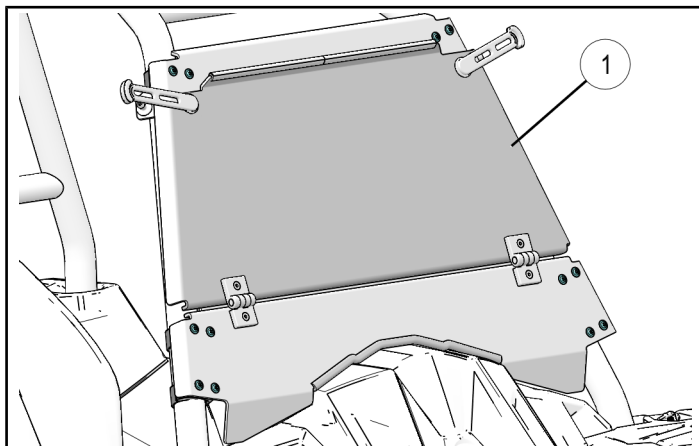


#### TIP

If there is any difficulty installing the windshield ①, loosen the screws ⑦ to allow for easier fitment onto ROPS.



4. Move windshield ① into up position. Slide visor so that rubber strap bumpers ⑧ sit properly on the visor surface. Attach rubber straps to the ball studs ④. Snap the visor clamps into position.



5. Torque all clamps screws ⑦ to specification.

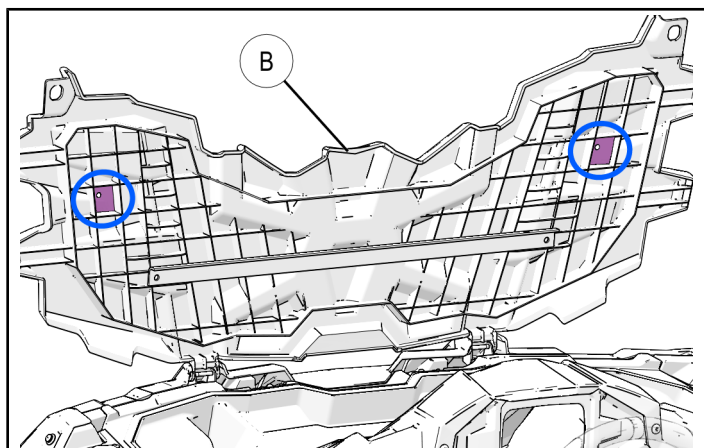
#### TORQUE

$8 \pm 1$  ft. lbs. ( $11 \pm 1$  Nm)

6. Gently flip down windshield for marking the location for spacer mounting ⑨ on front box cover. Refer to steps 8 and 9 for spacer installation.
7. Twist both the knobs (A) and open the front box cover (B).



- 
- A technical line drawing of the front of a vehicle chassis. The drawing shows the front suspension, steering knuckles, and the front end of the frame. A callout labeled 'B' points to the front suspension assembly.



- 

- 

Failure to perform the above may allow airflow to separate windshield from vehicle, resulting in an accident and severe injury or death.