

FRONT BULL BUMPER KIT

POLARIS

ENGINEERED PARTS
ACCESSORIES & APPAREL

P/N 2881202

APPLICATION

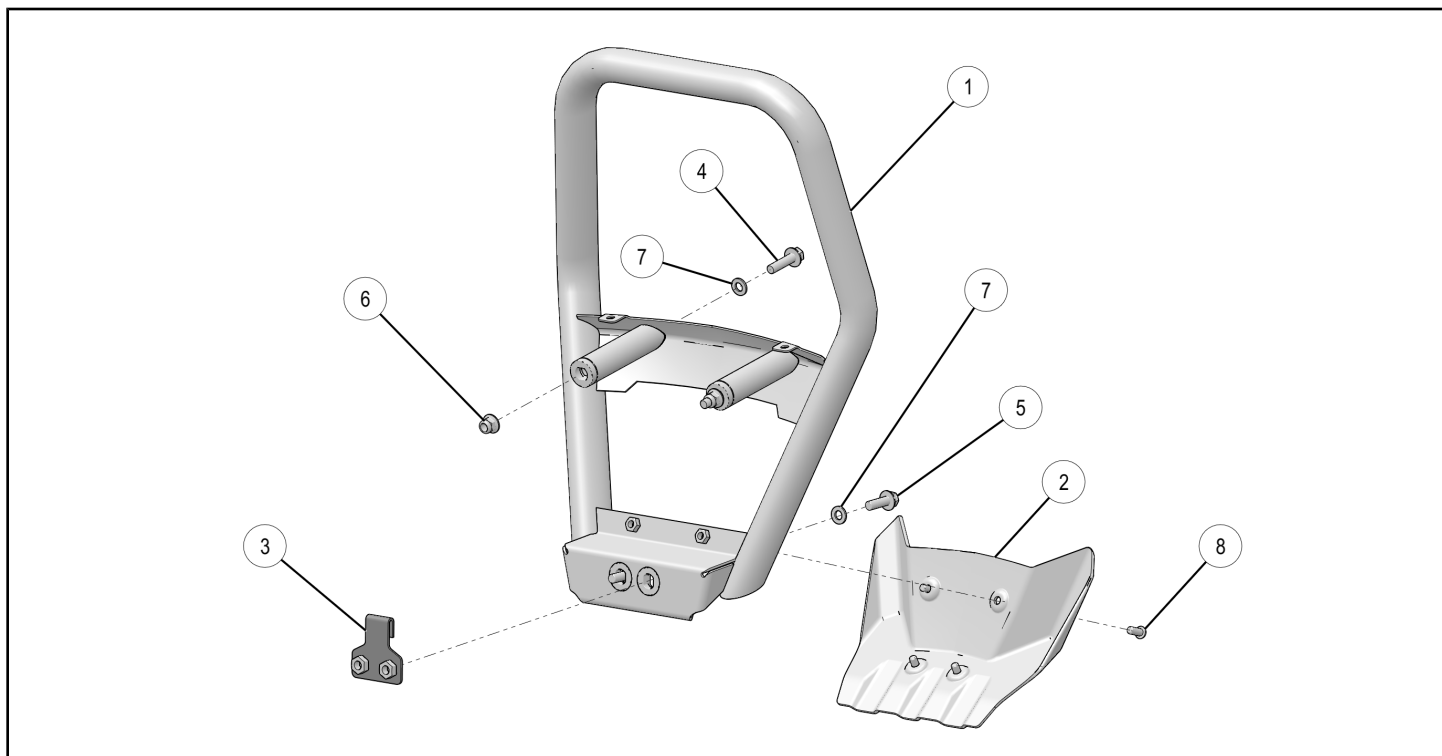
RZR 900, RZR 4 900, RZR S 900, RZR XP 1000, RZR XP4 1000

BEFORE YOU BEGIN

Read these instructions and check to be sure all parts and tools are accounted for. Please retain these installation instructions for future reference and parts ordering information.

KIT CONTENTS

This Kit includes:



| REF | QTY | PART DESCRIPTION | PART NUMBER |
|-----|-----|--|-------------|
| 1 | 1 | Front Bull Bumper Weldment | 1021774 |
| 2 | 1 | Skid Plate, Bull Bumper | 5452554 |
| 3* | 1 | Lower Backer Plate | 5260902 |
| 4* | 2 | Screw, Hex Head Flange - M10 X 1.25 X 40 | 7519332 |
| 5* | 2 | Screw, Hex Head Flange - M10 X 1.5 X 30 | 7519803 |
| 6* | 2 | Flange Nut - M10 X 1.25 | 7547333 |
| 7* | 4 | Washer - 10.5 X 22 X 2.2 | 7556733 |
| 8* | 4 | Screw, Torx Button Head - M8 X 1.25 X 20 | - |
| | 1 | Instructions | 9926377 |

Items marked (*) are included in Hardware Kit PN 2206086.

TOOLS REQUIRED

- Safety Glasses
- Metric Wrench Set

- Torx Driver
- Metric Socket Set and Ratchet

IMPORTANT

Your FRONT BULL BUMPER KIT is exclusively designed for your vehicle. Please read the installation instructions thoroughly before beginning. Installation is easier if the vehicle is clean and free of debris. For your safety, and to ensure a satisfactory installation, perform all installation steps correctly in the sequence shown.

ASSEMBLY TIME

Approximately 25 minutes

INSTALLATION INSTRUCTIONS

1. Place vehicle in "PARK". Turn key to "OFF" position and remove from vehicle.
2. Prepare vehicle for bumper installation:
 - a. Vehicles without existing front bumper: Proceed to Step 3.
 - b. Vehicles with existing front bumper: Remove upper and lower attach fasteners from existing front bumper as shown, supporting bumper as required. Remove bumper.
3. Gain access:
 - a. Vehicles without existing front bumper: Remove front grill (A), then proceed to Step 8.
 - b. Vehicles with existing front bumper: Remove front grill (A) and winch cover (B), then proceed to Step 4.

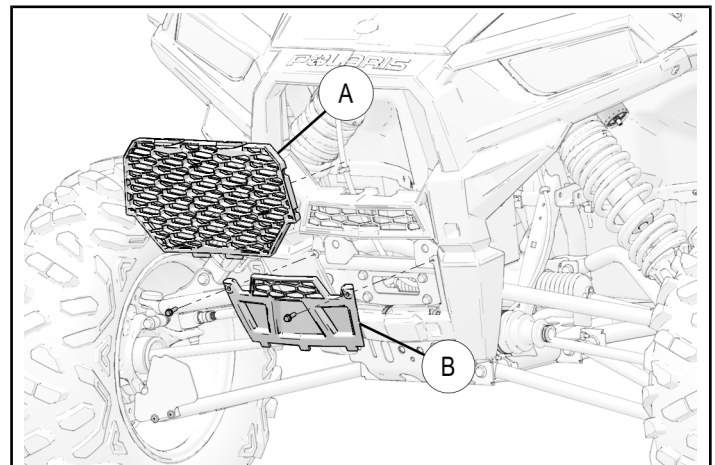
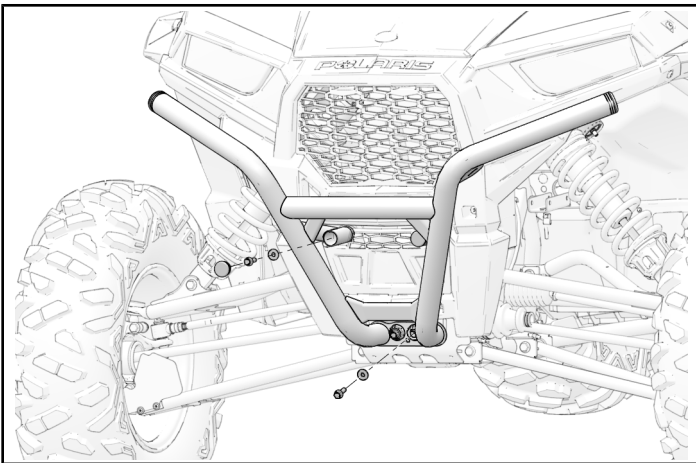
CAUTION

Failure to adequately support bumper during removal may result in personal injury or damage to equipment.

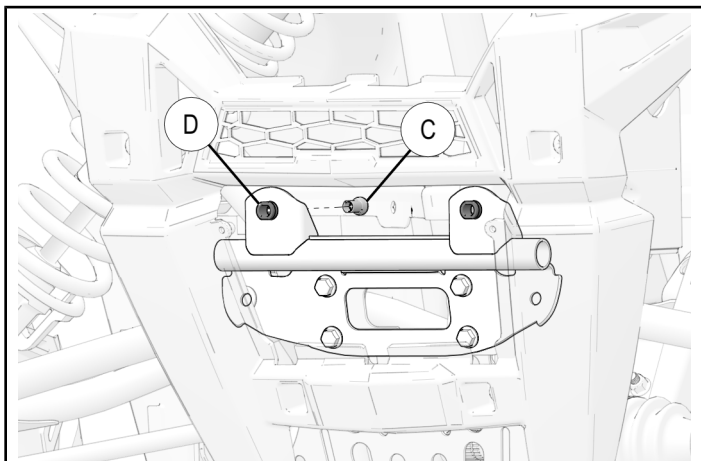
NOTE

Grill (A) locking tabs are located at top of grill.

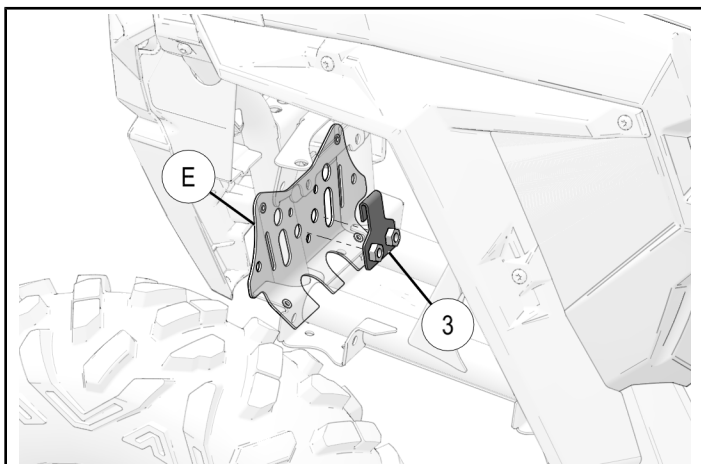
- b. Vehicles with existing front bumper: Remove upper and lower attach fasteners from existing front bumper as shown, supporting bumper as required. Remove bumper.



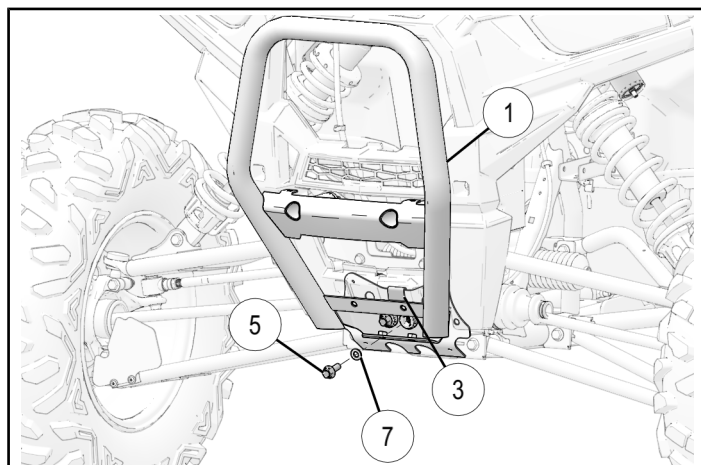
4. At upper bumper attach points, use pin punch to drive wedge (C) out of expansion tube (D) as shown.



5. Using locking pliers, grasp expansion tube (D) and remove from frame.
6. Repeat Steps 4 and 5 for opposite side. Discard old hardware.
7. Reinstall winch cover (B). Do not reinstall front grill (A) at this time.
8. Hang backer plate (3) from vehicle chassis (E), aligning fastener holes as shown.



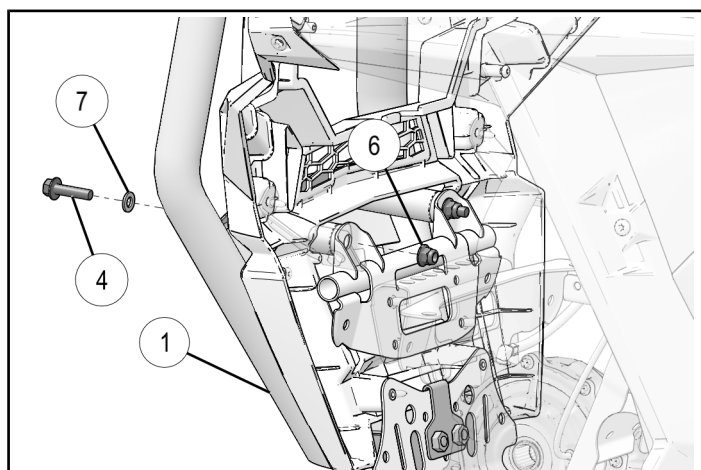
9. Position bumper (1), then loosely install screws (5) through washers (7), bumper, and chassis, into backing plate (3) as shown.



10. Loosely install screws (4) through washers (7), bumper (1) and chassis, into nuts (6) as shown.

NOTE

Thread screws onto nuts only until screw threads reach nylon insert in nuts.



11. Reinstall front grill.
12. Torque screws (4) (5) to specification.

TORQUE

40 ft. lbs. (54 Nm)

13. Install skid plate ② using screws ⑧ as shown.
Torque to specification.

TORQUE

16 ft. lbs. (22 Nm)

