

# FRONT BUMPER KIT



**P/N 2884019**

## APPLICATION

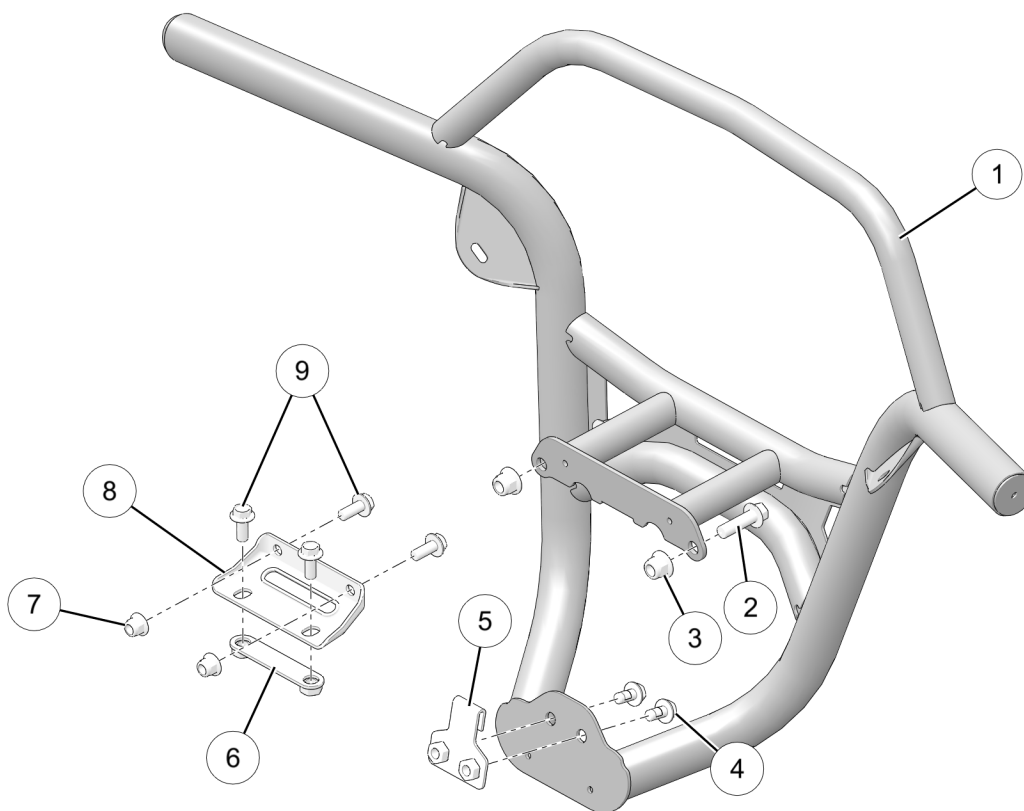
Verify accessory fitment at [Polaris.com](https://www.polaris.com).

## BEFORE YOU BEGIN

Read these instructions and check to be sure all parts and tools are accounted for. Please retain these installation instructions for future reference and parts ordering information.

## KIT CONTENTS

This Kit includes:



REF	QTY	PART DESCRIPTION	PART NUMBER
1	1	Bumper, Front	-
2	2	Screw, Hex Flange - M12 X 1.75 X 40	7519730
3	2	Nut, Hex Flange - M12 X 1.75	7547441
4	2	Screw, Hex Flange, with Locking Patch - M10 X 1.5 X 20	7518460
5	1	Backer Plate	5260902
6	1	Nut Plate	-
7	2	Nut, Hex Flange, Locking - M10 X 1.5	7547313
8	1	Bracket, Bumper Support	-

REF	QTY	PART DESCRIPTION	PART NUMBER
9	4	Screw, Hex Flange - M10 X 1.5 X 25	7519071
	1	Instructions	9929343

## TOOLS REQUIRED

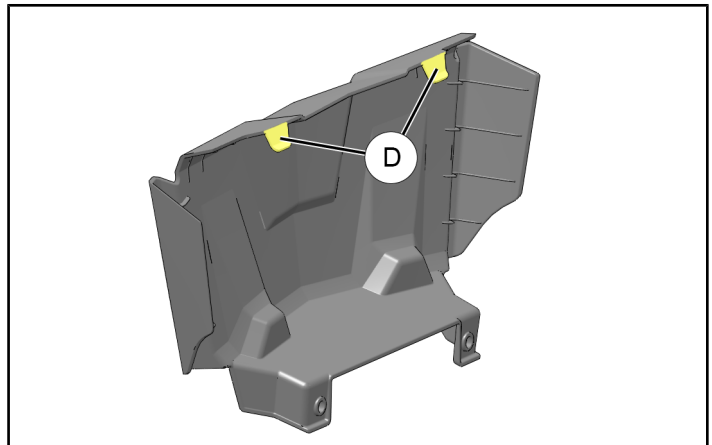
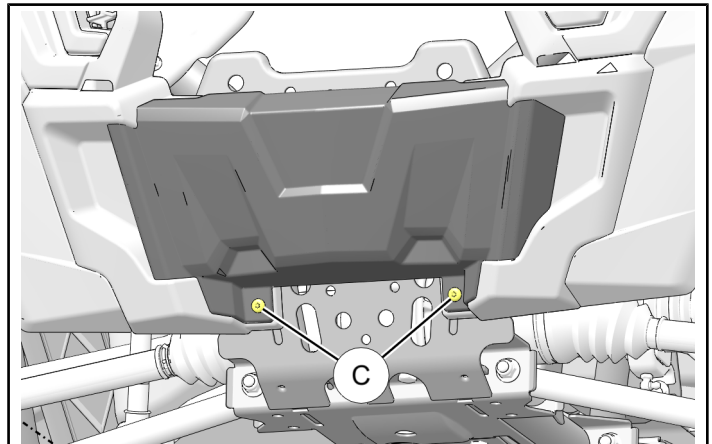
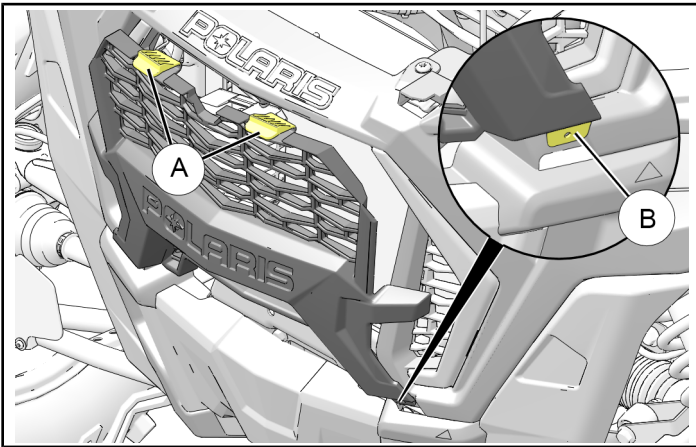
- Safety Glasses
- Screwdriver Set, Torx®
- Socket Set, Metric
- Torque Wrench
- Wrench Set, Metric

## IMPORTANT

Your Front Bumper Kit is exclusively designed for your vehicle. Please read the installation instructions thoroughly before beginning. Installation is easier if the vehicle is clean and free of debris. For your safety, and to ensure a satisfactory installation, perform all installation steps correctly in the sequence shown.

## INSTALLATION INSTRUCTIONS

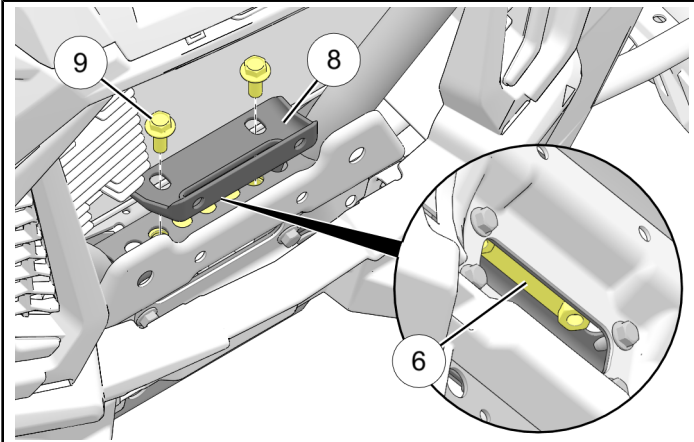
- Shift vehicle transmission into "PARK". Turn ignition switch to "OFF" position and remove key.
- Gain access.
  - Remove front grille by depressing two tabs **A** at top of grille, tip grille slightly outward, then lift to disengage two lower tabs **B** (LH and RH).
  - Remove lower front fascia (winch cover) by removing two screws **C**, then tilt bottom of fascia slightly forward and lift to disengage two upper tabs **D**. Retain screws.



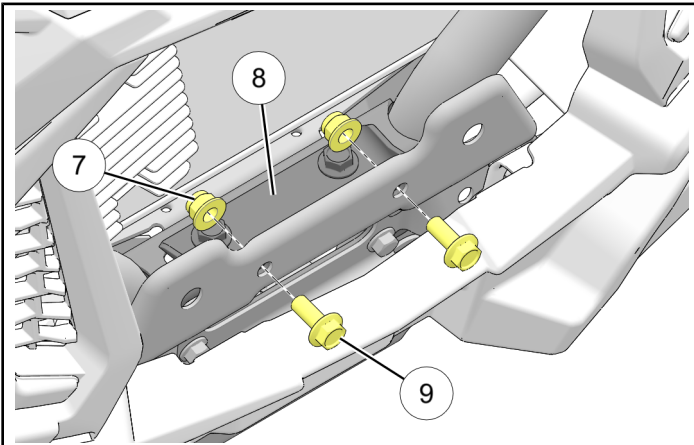
3. Install bumper support bracket.
- a. Loosely install lower leg of bumper support bracket ⑧ to suspension support structure using two screws ⑨ and nut plate ⑥. Ensure bracket is centered on suspension support structure.

**NOTE**

Inset view looking upwards.



- b. Loosely install upper leg of bumper support bracket ⑧ to suspension support structure using two each screws ⑨ and nuts ⑦.



- c. Torque all four screws to specification.

**TORQUE**

40 ft. lbs. (54 Nm)  $\pm$  10%

- d. Reinstall lower front fascia using two retained screws ③.

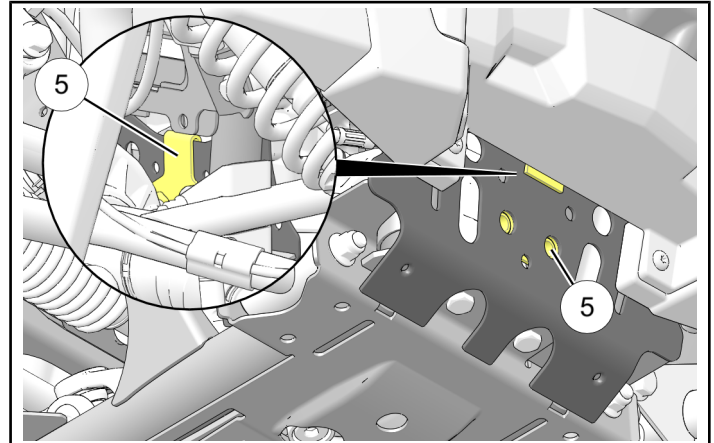
4. Hang backer plate ⑤ on bumper support structure, aligning fastener holes as shown.

**NOTE**

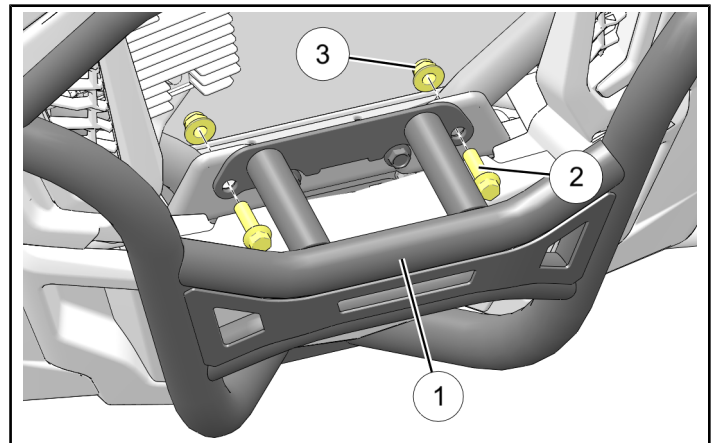
Inset view looking forward from right front wheel well.

**TIP**

Secure backer plate with tape to minimize movement when installing bumper in Step 6.



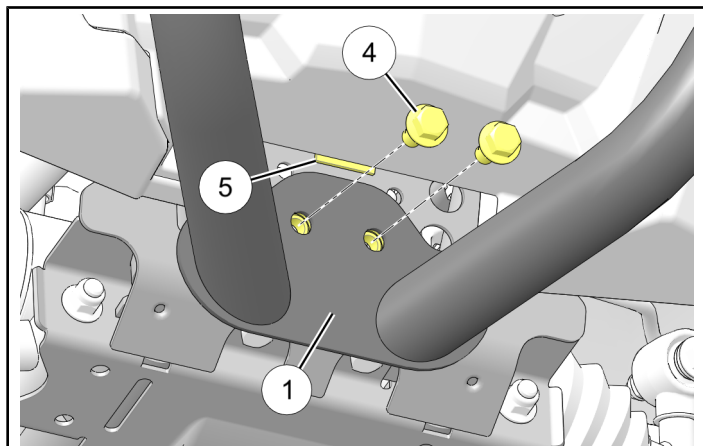
5. Loosely install upper portion of bumper ① to suspension support structure using two each screws ② and nuts ③.



6. Install lower portion of bumper ① to bumper support structure using two screws ④ into backer plate ⑤.

#### TIP

Use light force to install screws to prevent backer plate from pivoting rearward.



7. Torque screws ② and ④ to specification.

#### TORQUE

M12 screws ②: 54 ft. lbs. (73 Nm)  $\pm$  10%  
M10 screws ④: 40 ft. lbs. (54 Nm)  $\pm$  10%

8. Reinstall front grille.

## FEEDBACK FORM

A feedback form has been created for the installer to provide any comments, questions or concerns about the installation instructions. The form is viewable on mobile devices by scanning the QR code or by clicking [HERE](#) if viewing on a PC.

#### FEEDBACK FORM

