

# REAR SPORT BUMPER KIT



**P/N 2881095**

## APPLICATION

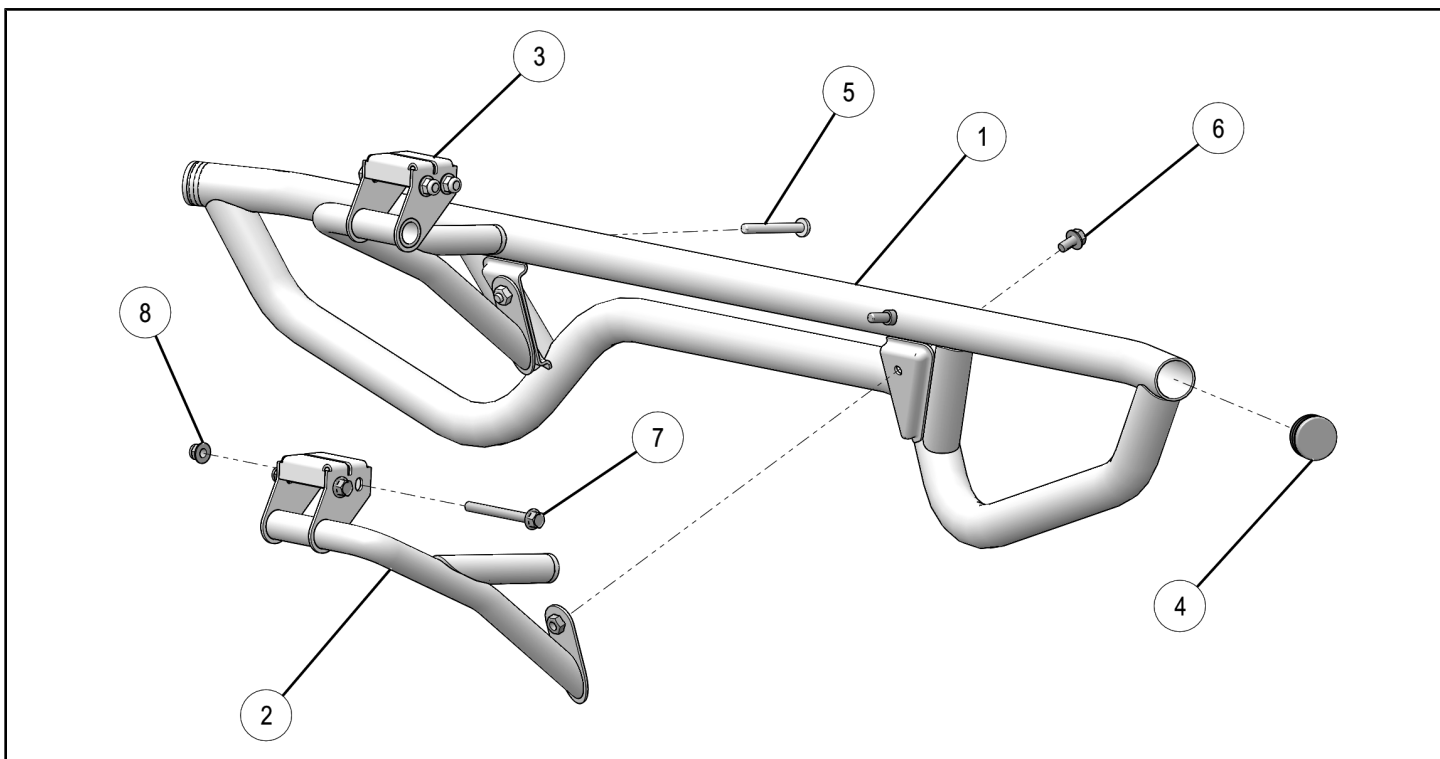
Verify accessory fitment at [Polaris.com](http://Polaris.com).

## BEFORE YOU BEGIN

Read these instructions and check to be sure all parts and tools are accounted for. Please retain these installation instructions for future reference and parts ordering information.

## KIT CONTENTS

This Kit includes:



REF	QTY	PART DESCRIPTION	PART NUMBER
1	1	Rear Bumper	1021533
2	1	Support, Rear Bumper, LH	1021881
3	1	Support, Rear Bumper, RH	1021882
4*	2	Plug	5433305
5*	2	Screw, Torx® Pan Head - M8 X 1.25 X 70	7518534
6*	2	Screw, Hex Flange - M8 X 1.25 X 16	7519181
7*	4	Bolt, Hex Flange - M8 X 1.25 X 80	7519217
8*	4	Nut, Hex Flange - M8 X 1.25	7547317
	1	Instructions	9926155

Items marked (\*) are included in Hardware Kit PN 2205973.

## TOOLS REQUIRED

- Safety Glasses
- Torx Driver Set
- Socket Set, Metric

- Wrench Set, Metric
- Torque Wrench

## IMPORTANT

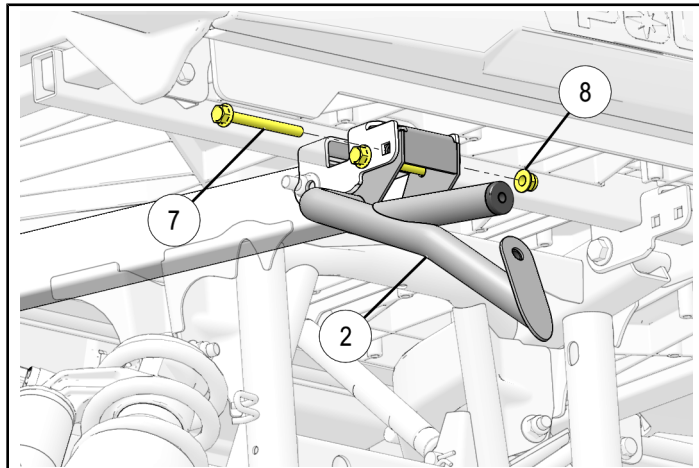
Your REAR SPORT BUMPER KIT is exclusively designed for your vehicle. Please read the installation instructions thoroughly before beginning. Installation is easier if the vehicle is clean and free of debris. For your safety, and to ensure a satisfactory installation, perform all installation steps correctly in the sequence shown.

## ASSEMBLY TIME

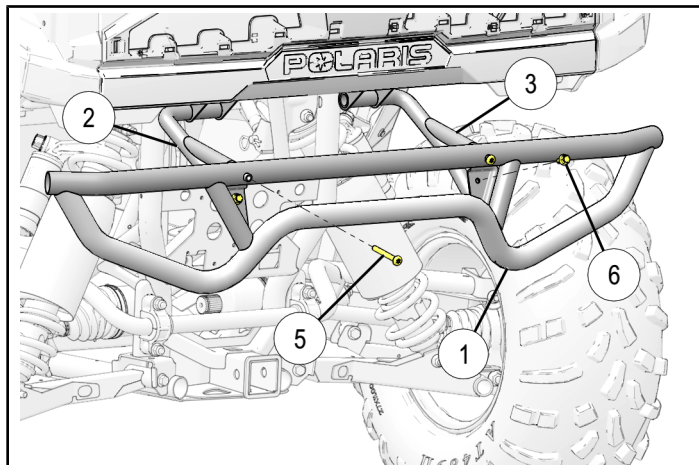
Approximately 15 minutes

## INSTALLATION INSTRUCTIONS

1. Place vehicle in "PARK". Turn key to "OFF" position and remove from vehicle.
2. Loosely install LH bumper support ② to vehicle chassis using two bolts ⑦ and nuts ⑧ as shown. Ensure proper orientation. Repeat for RH bumper support ③.



3. Loosely install bumper ① to bumper supports ② ③ using two Torx® screws ⑤ at upper attach locations, and two screws ⑥ at lower attach locations as shown.



4. Tighten all fasteners to specification.

### TORQUE

16 ft. lbs. (22 Nm)

5. Insert plugs ④ into open ends of bumper ① as shown.

