

# REAR BUMPER KIT



P/N 2880164, 2881590

## APPLICATION

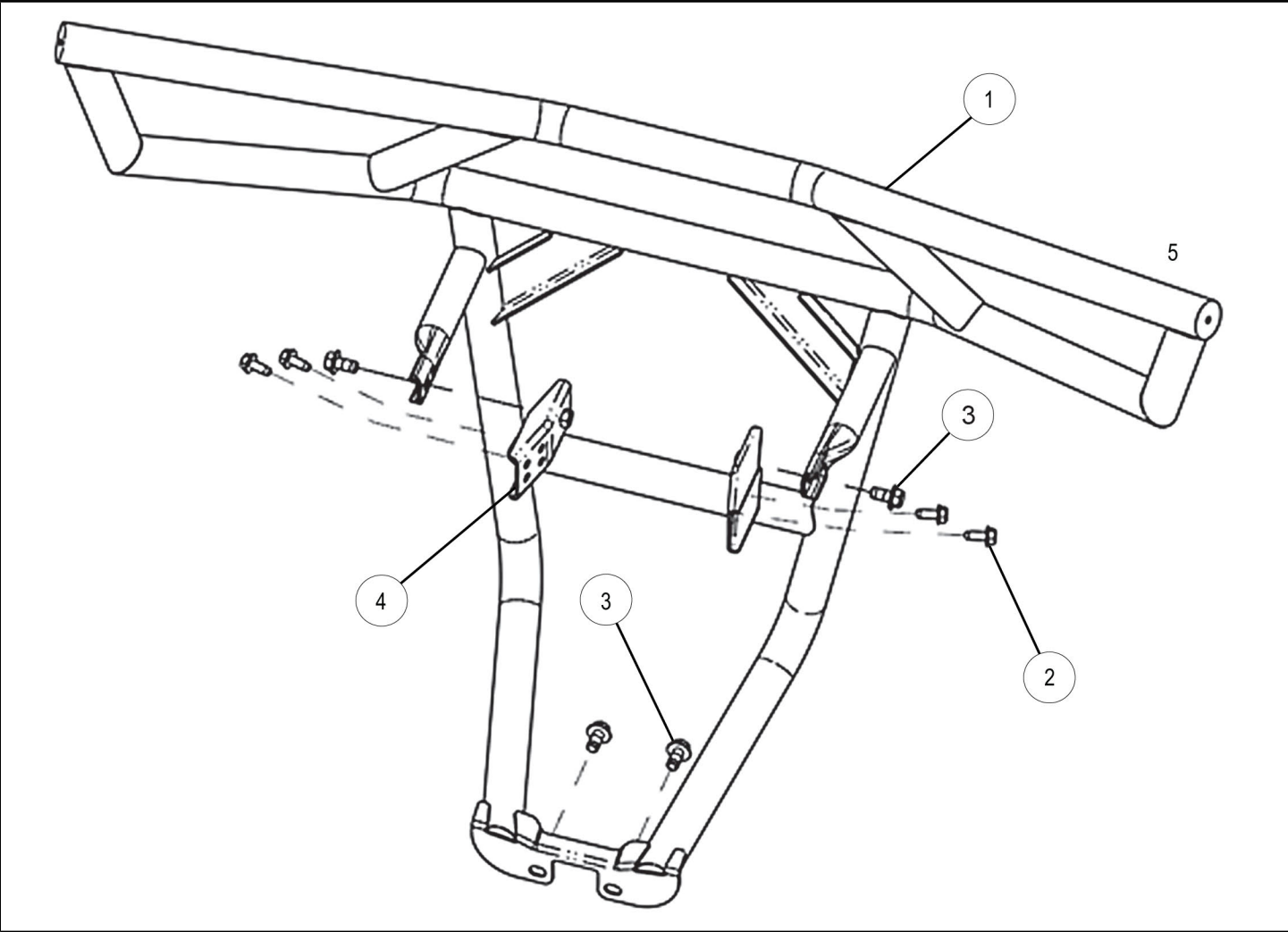
Verify accessory fitment at [Polaris.com](http://Polaris.com).

## BEFORE YOU BEGIN

Read these instructions and check to be sure all parts and tools are accounted for. Please retain these installation instructions for future reference and parts ordering information.

## KIT CONTENTS

This Kit includes:



REF	QTY	PART DESCRIPTION	PART NUMBER
1	1	Bumper, Rear	-
2*	4	Screw, Hex Flange- M8 X 1.25 X 20	7518555
3*	4	Screw, Hex Flange- M10 X 1.5 X 20	7519905

REF	QTY	PART DESCRIPTION	PART NUMBER
4	2	Bracket	-
	1	Instructions	9925151

Items marked (\*) are included in Hardware Kit PN 2205503

## TOOLS REQUIRED

- Safety Glasses
- Socket Set, Metric
- Torque Wrench

## IMPORTANT

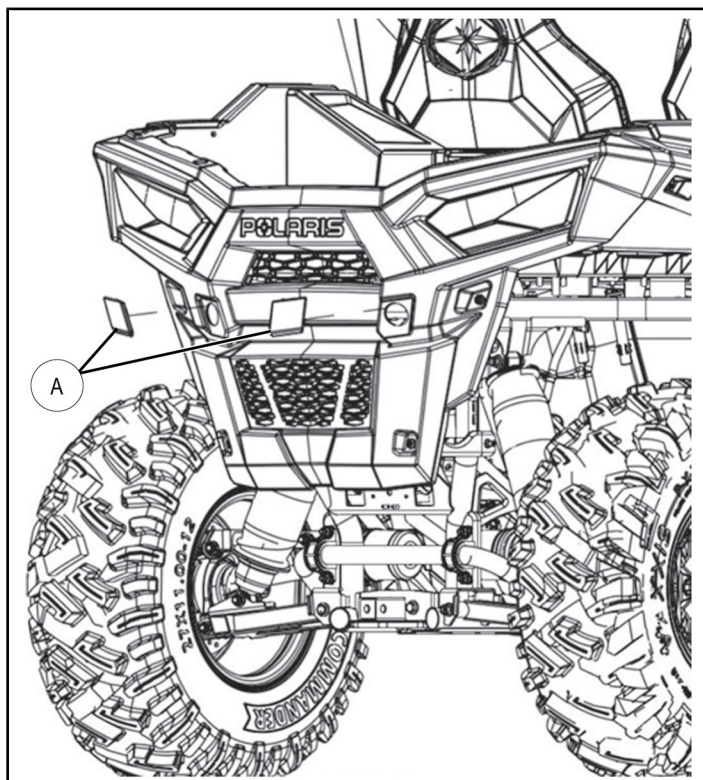
Your REAR BUMPER KIT is exclusively designed for your vehicle. Please read the installation instructions thoroughly before beginning. Installation is easier if the vehicle is clean and free of debris. For your safety, and to ensure a satisfactory installation, perform all installation steps correctly in the sequence shown.

## ASSEMBLY TIME

Approximately 15 minutes

## INSTALLATION INSTRUCTIONS

1. Shift vehicle transmission into "PARK". Turn key to "OFF" position and remove from vehicle.
2. Remove LH and RH rear fascia plugs (A) as shown.
3. Install bracket ④ to chassis using two screws ② through UPPER bracket fastener holes. Torque to specification. Repeat for opposite side.

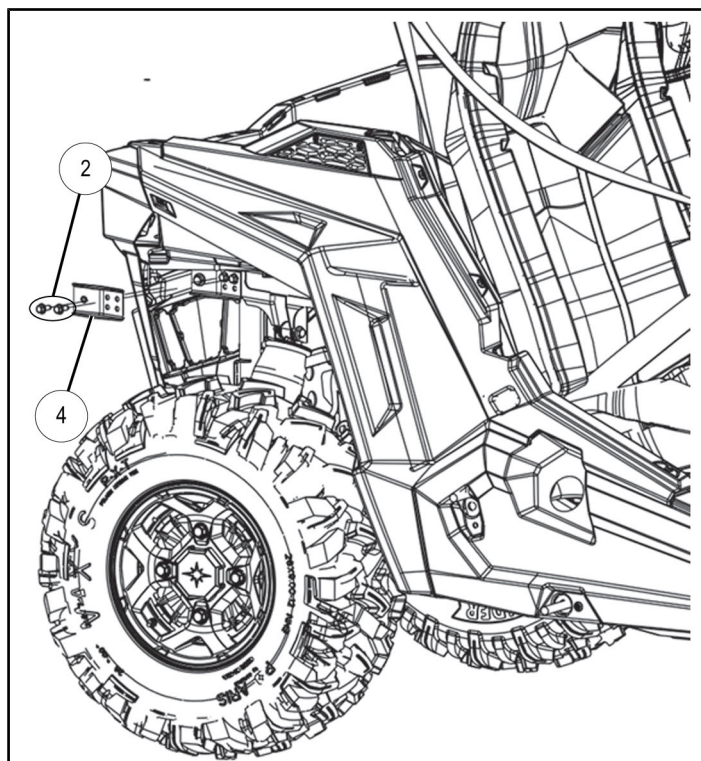


### TORQUE

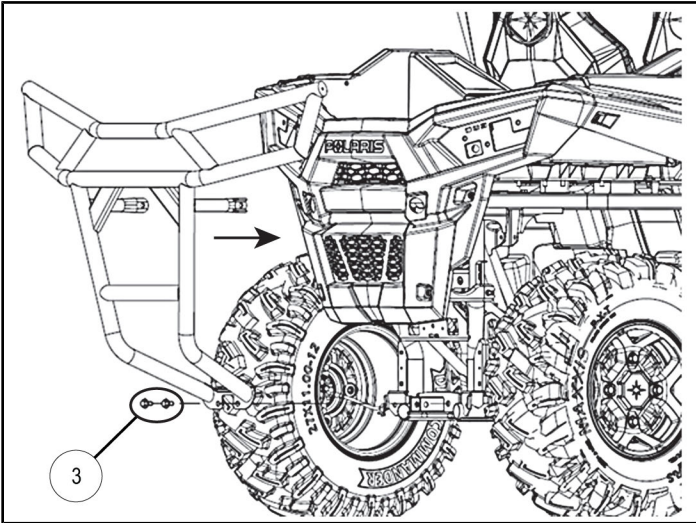
16 ft. lbs (22 Nm)

### NOTE

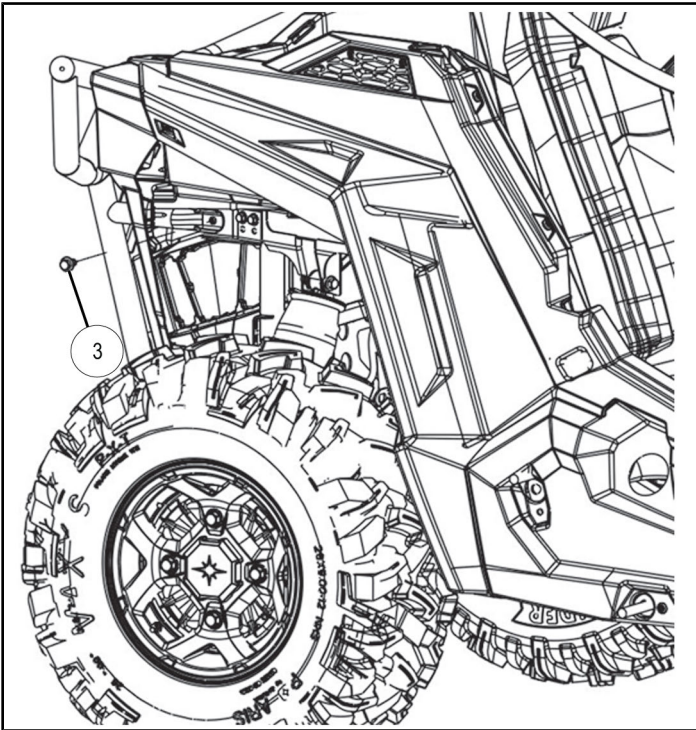
Lower bracket fastener holes not used.



4. Insert bumper mounting tubes through fascia openings, ensuring tubes are positioned on OUTBOARD sides of brackets ④, then loosely install two lower screws ③ as shown.



5. Install upper screw ③ through bumper mounting tube into bracket ④ as shown. Repeat for opposite side.



6. Torque all screws ③ to specification.

### **TORQUE**

40 ft. lbs (54 Nm)