

Contents

Select Language

Powered by Google Translate

Fixed Windshield Kit

P/N 2884410

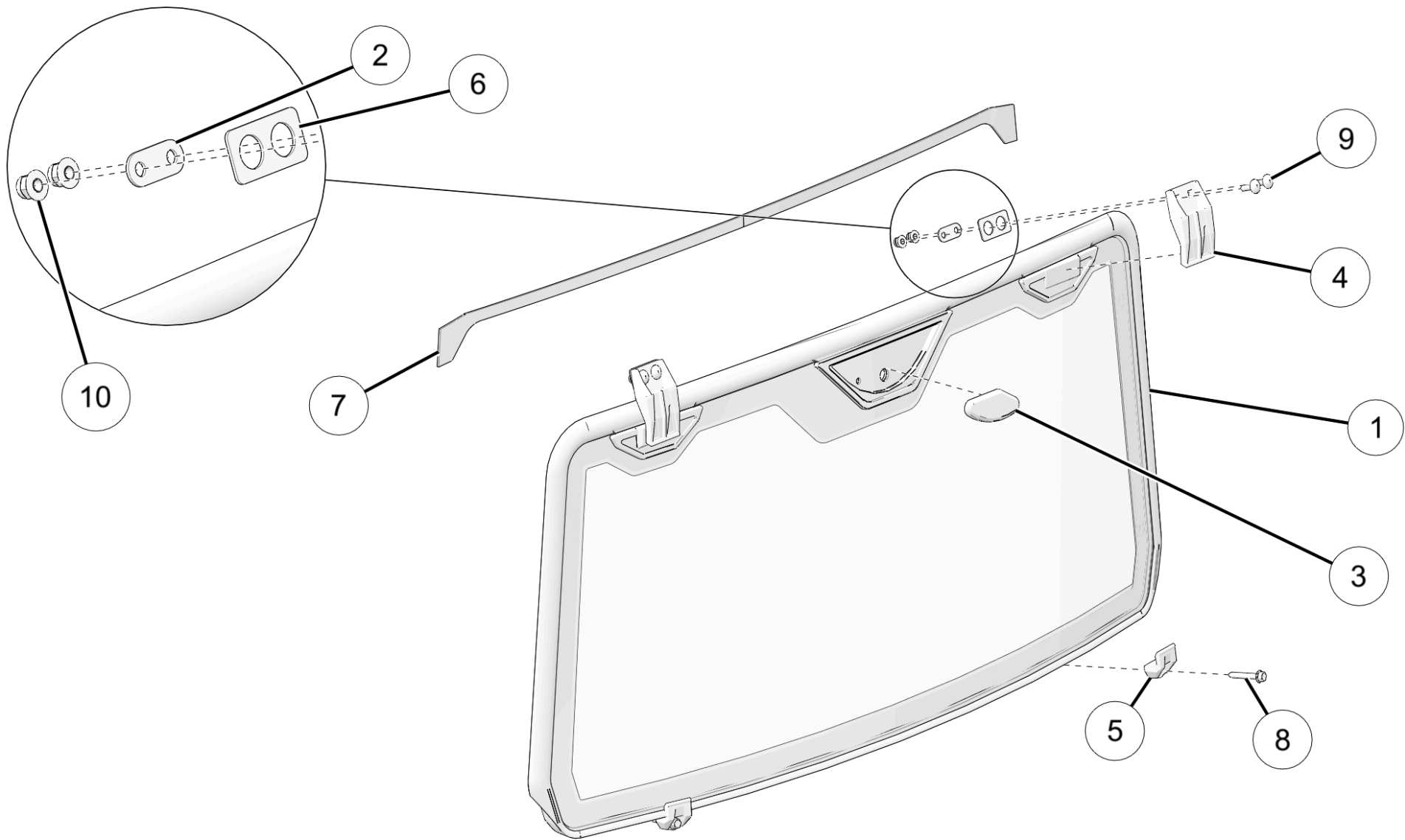
Before You Begin

Read these instructions and check to be sure all parts and tools are accounted for. Please retain these installation instructions for future reference and parts ordering information.

Application

Verify accessory fitment at www.polaris.com.

Kit Contents



Ref	Qty	Part Description	P/N Available Separately	Available Service Kit
1	1	Windshield, Fixed	2637903	n/a
2	2	Washer Plate	n/a	n/a
3	1	Wiper Cover Molding	n/a	n/a
4	2	Clamp, Window	5457721	n/a
5	2	Clamp, Window Lower	5458772	n/a
6	2	Gasket, Windshield	5815198	2209674
7	1	Seal, Windshield	5815471	n/a
8	2	Screw, Hex Flange Head, Thread Former	7518677	2209674

Ref	Qty	Part Description	P/N Available Separately	Available Service Kit
9	4	Screw, Carriage (M8 x 1.25 x 25 mm)	7520298	2209674
10	4	Nut, Flanged (M8 x 1.25 mm)	7548028	2209674

Tools Required

- Safety Glasses
- Drill
- Drill Bit:
 - 5/16 in (8 mm)
- Drill Stop
- Socket Set, Metric
- Torque Wrench
- Wrench Set, Metric

Consumables Required

- Cleaning Solution (99% water + 1% mild dishwashing detergent)
- Cyanoacrylate Adhesive (Super Glue)

Important

Your Fixed Windshield Kit is exclusively designed for your vehicle. Please read the installation instructions thoroughly before beginning. Installation is easier if the vehicle is clean and free of debris. For your safety, and to ensure a satisfactory installation, perform all installation steps correctly in the sequence shown.

Installation Instructions

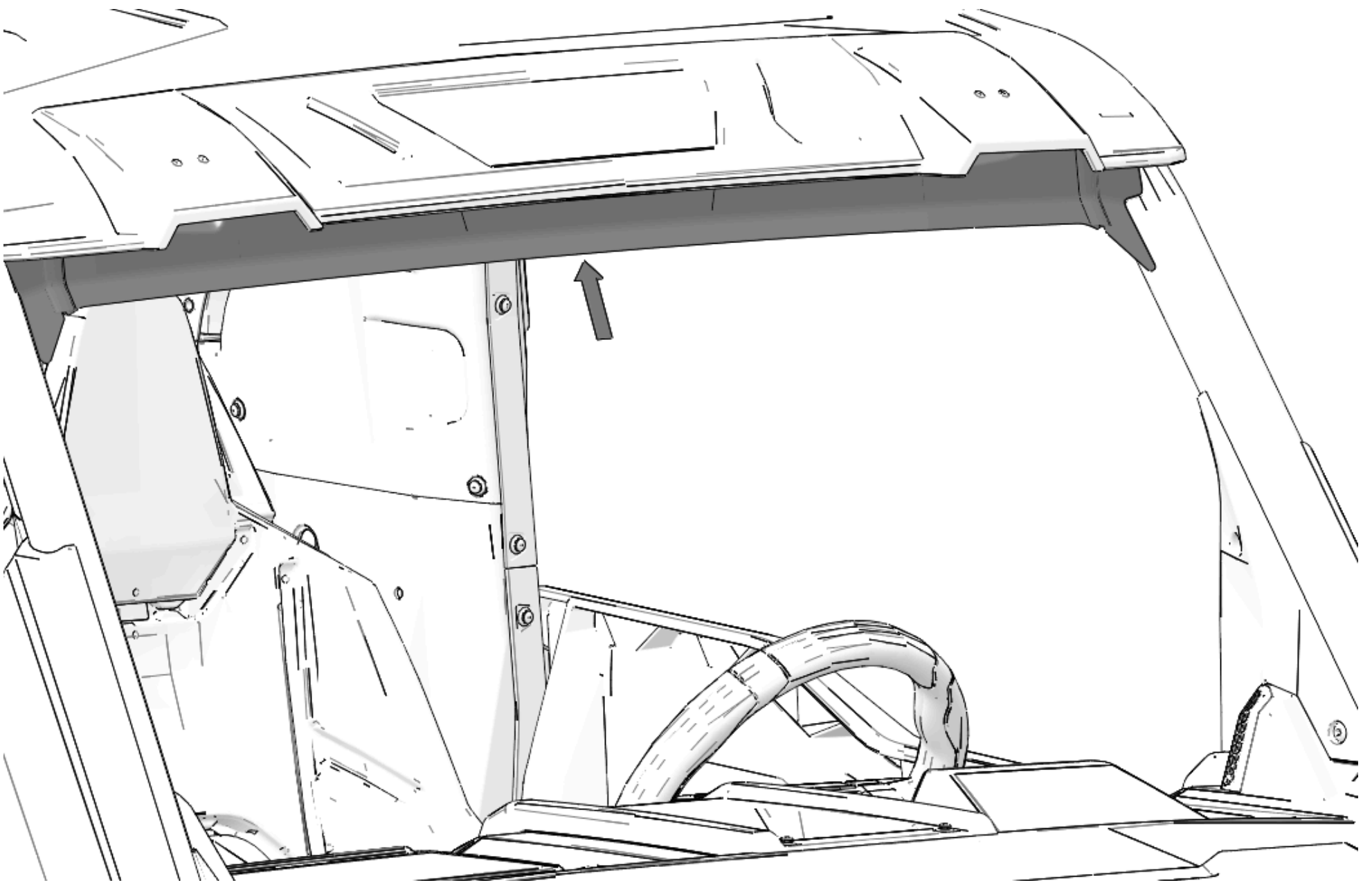
Vehicle Preparation

General

1. Park vehicle on a flat surface.
2. Shift vehicle into PARK.
3. Turn key to OFF position and remove key.

Accessory Installation

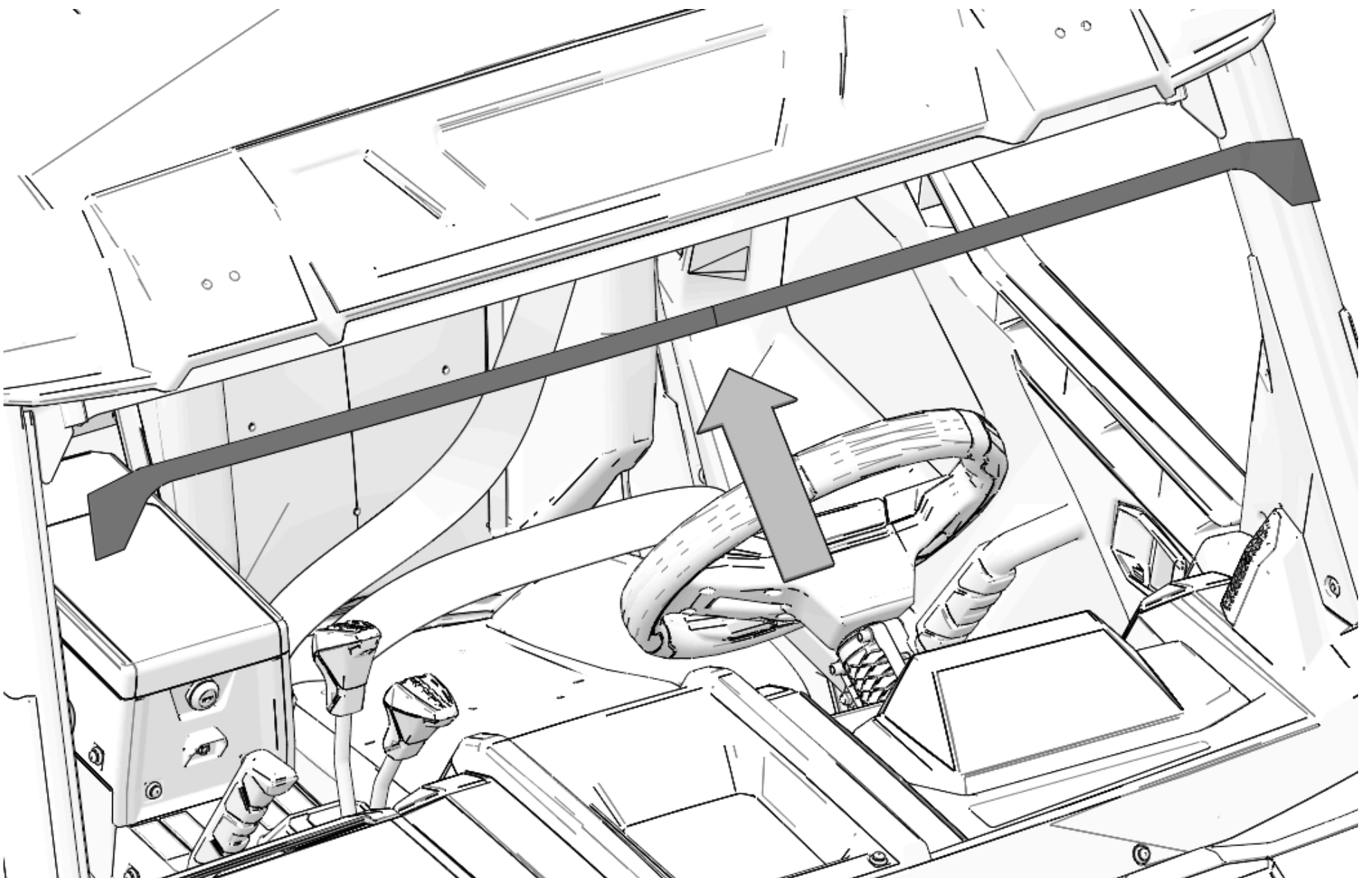
1. Clean visor plate at top of windshield opening. Plate should be free of dust, dirt, and debris.



2. Remove backing paper and install windshield seal (7) on visor plate. Bottom edge of seal should be flush with bottom edge of visor plate.

TIP

Remove backing paper from one end of seal and install along the angle at end of visor plate. Do the same for the other end of the seal. Finally remove backing paper from the length of the seal and attach to visor plate, working from the ends toward the center.

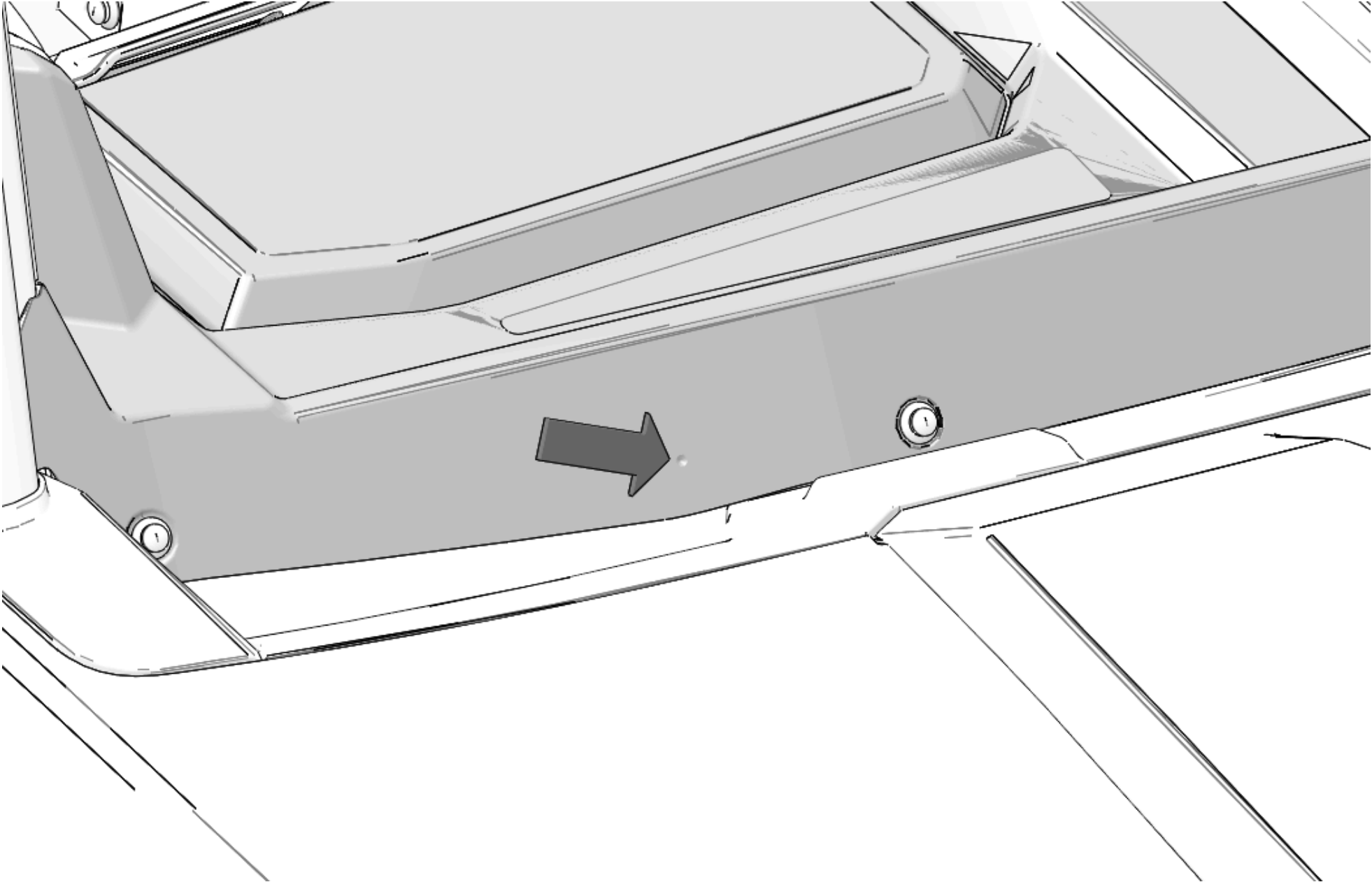


3. Locate two dimples on dash at bottom of windshield opening. Drill hole through each dimple.

NOTICE
Right side shown, left side similar.

MEASUREMENT
Drill Bit Size: 5/16 in (8 mm)

IMPORTANT
Control drill depth. Ensure tool is clear of all other parts and components to prevent damage to vehicle. Dash is approximately 0.18 in (4.5 mm) thick.

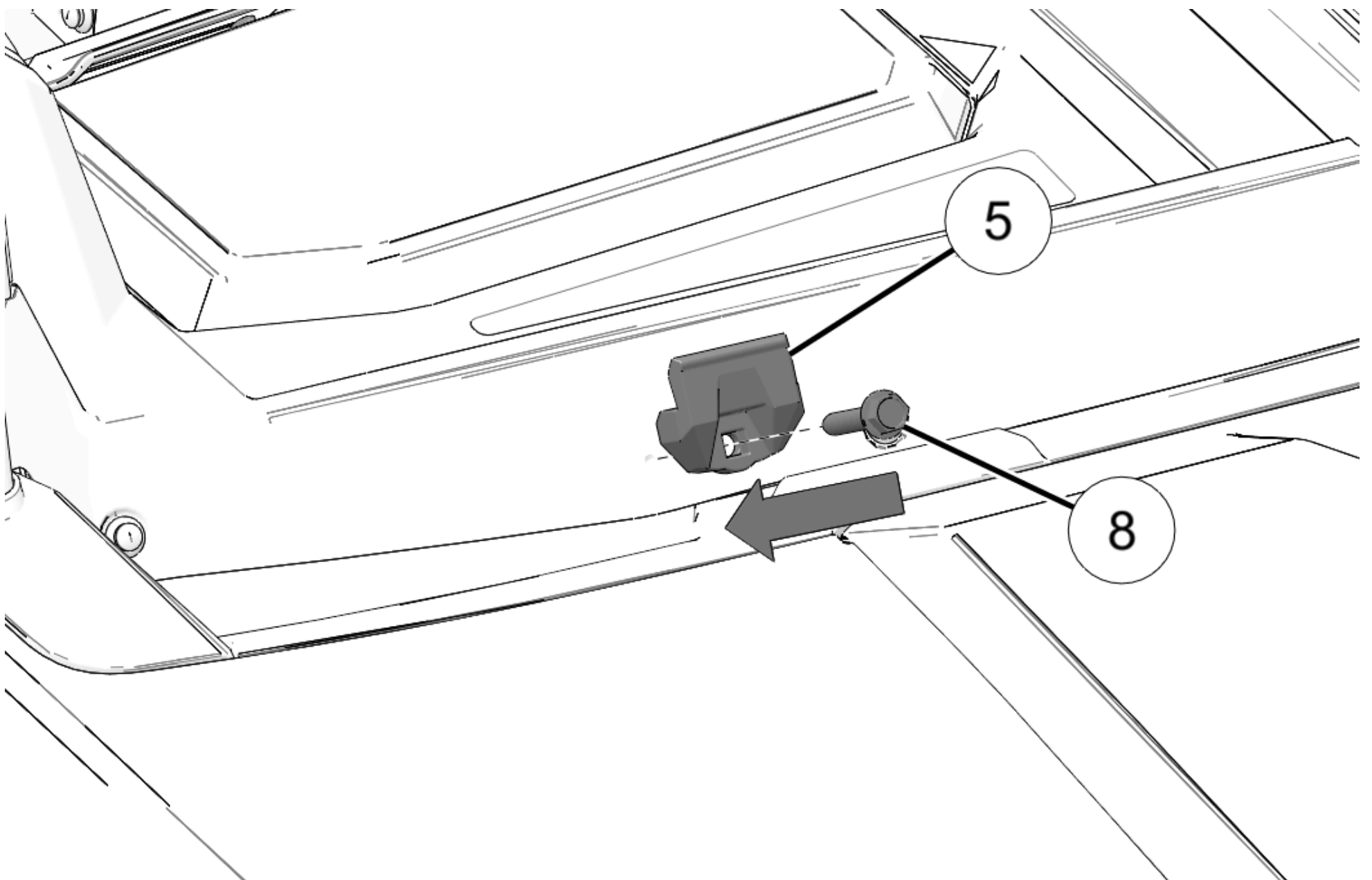


4. Loosely install lower clamps ⑤ and screws ⑧.

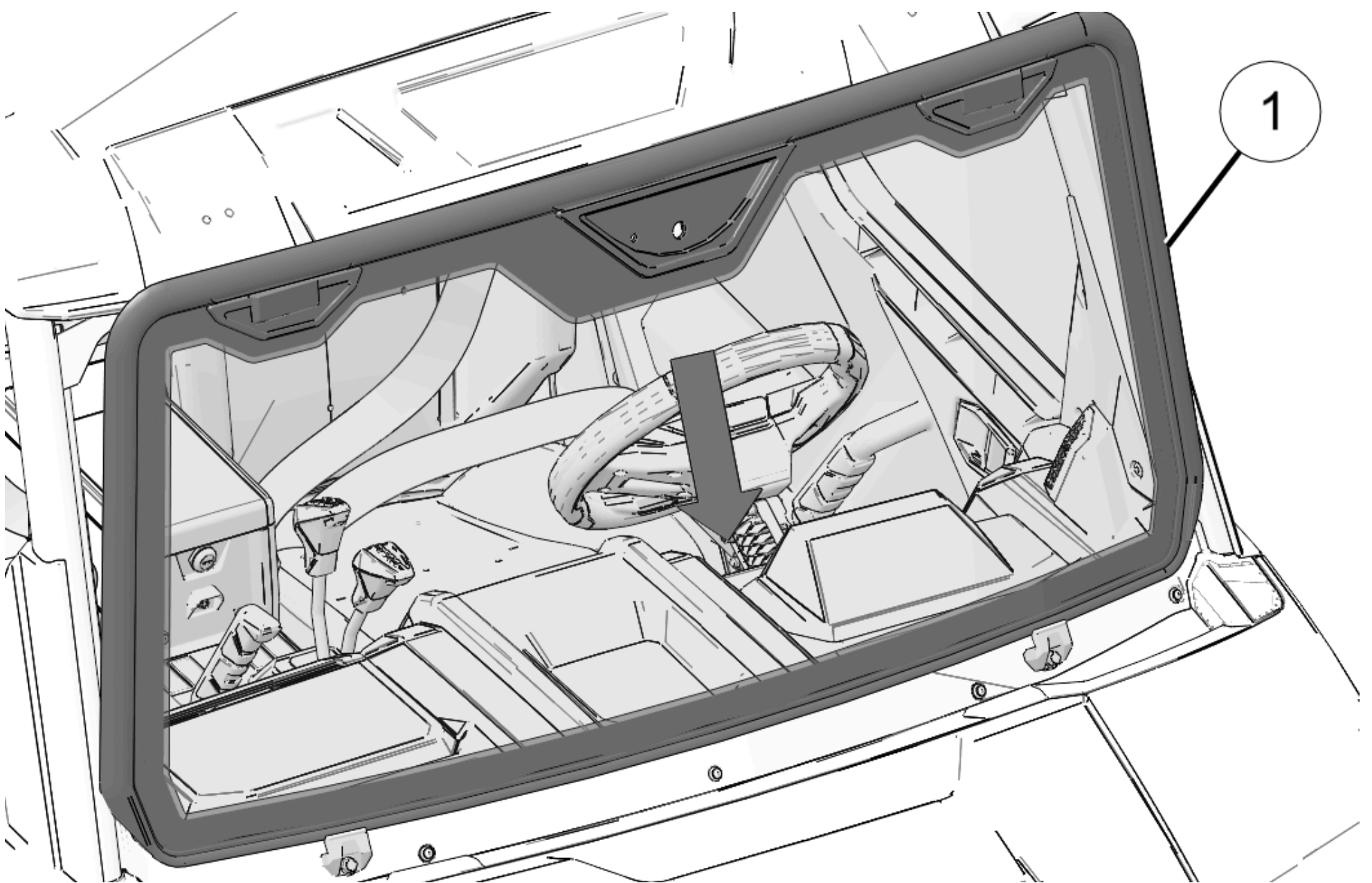
DO NOT torque fasteners at this time.

NOTICE
Right side shown, left side similar.

TIP
Screw ⑧ is a self-tapping screw. Apply heavy inward pressure when starting threads in the hole.



5. Set windshield ① on the lower clamps and into position in the opening.



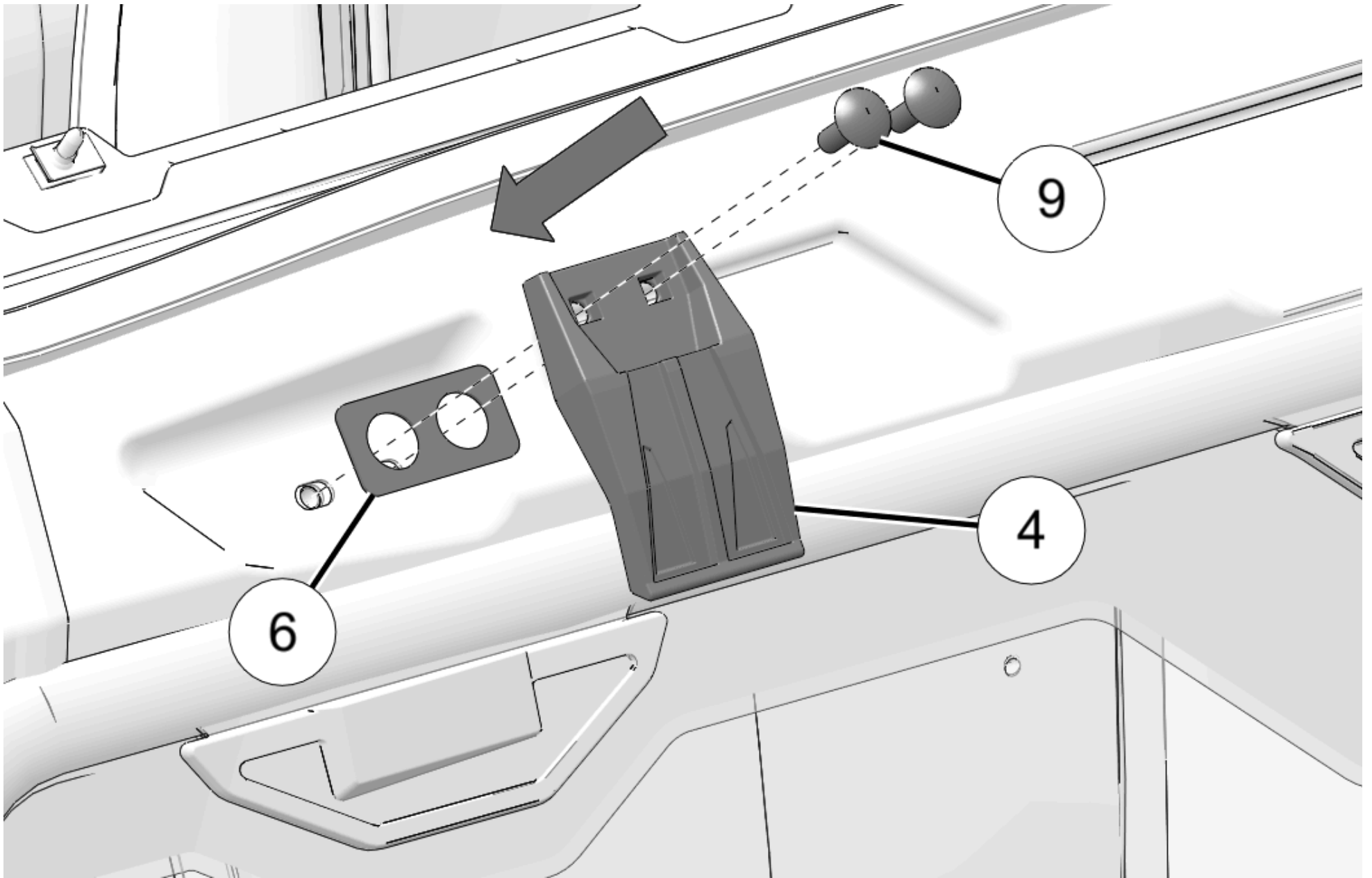
6. Loosely install gasket ⑥, clamp ④, and screws ⑨ at top of windshield.

NOTICE

Right side shown, left side similar.

TIP

A few drops of cyanoacrylate glue can be used to hold gasket (6) in place.

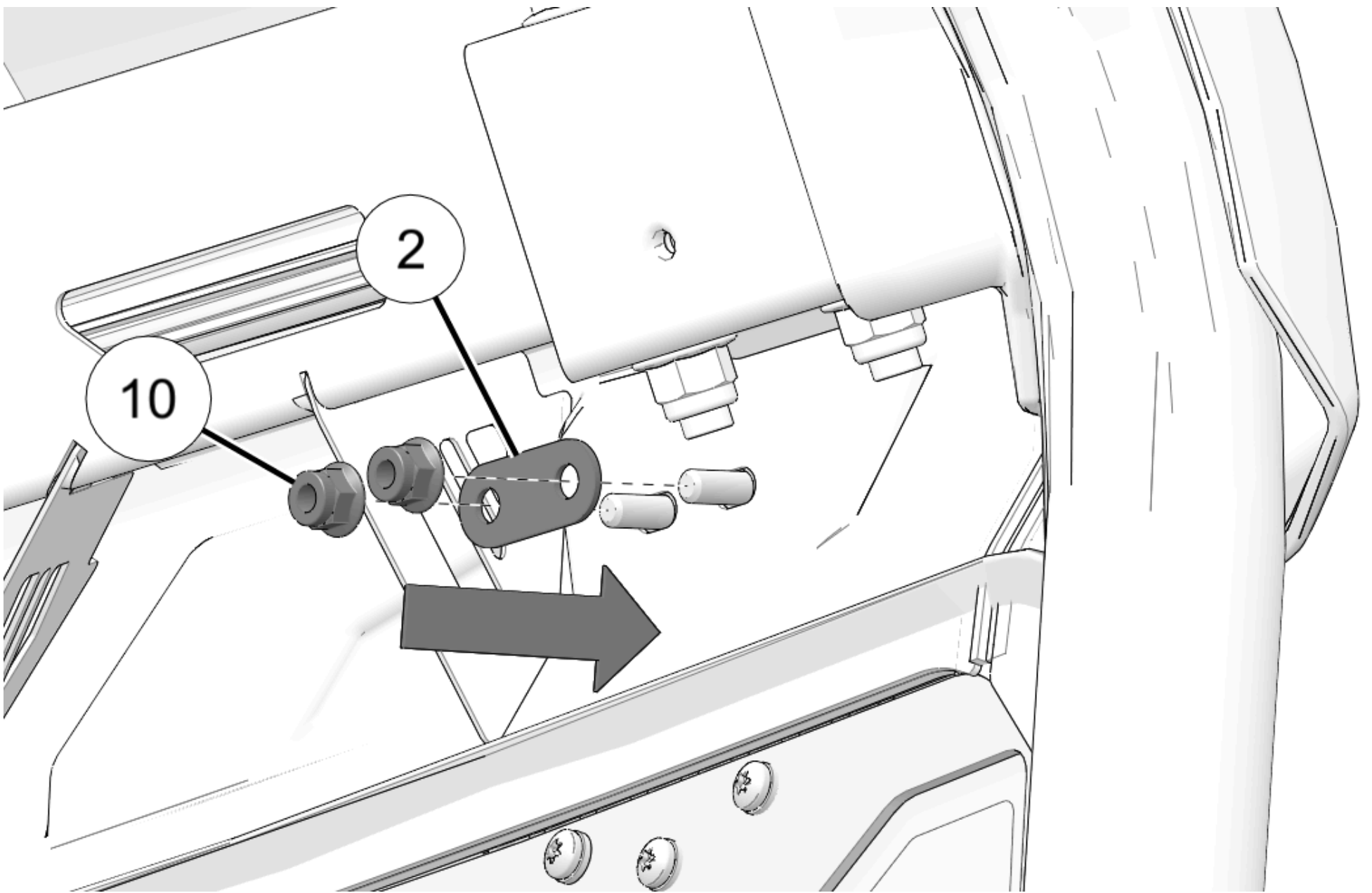


7. Loosely install washer plate (2) and nuts (10) on inside of windshield.

DO NOT torque fasteners at this time.

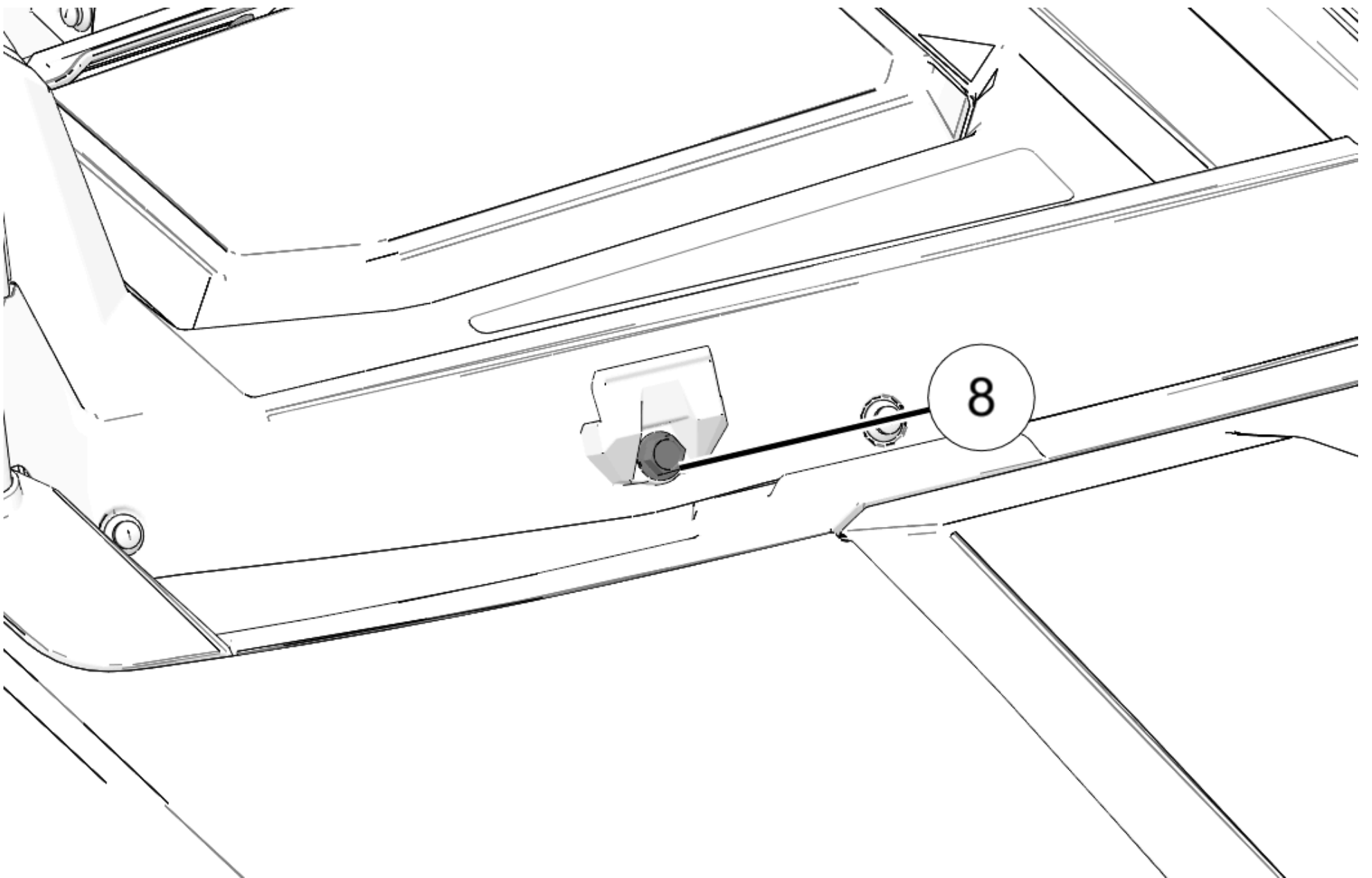
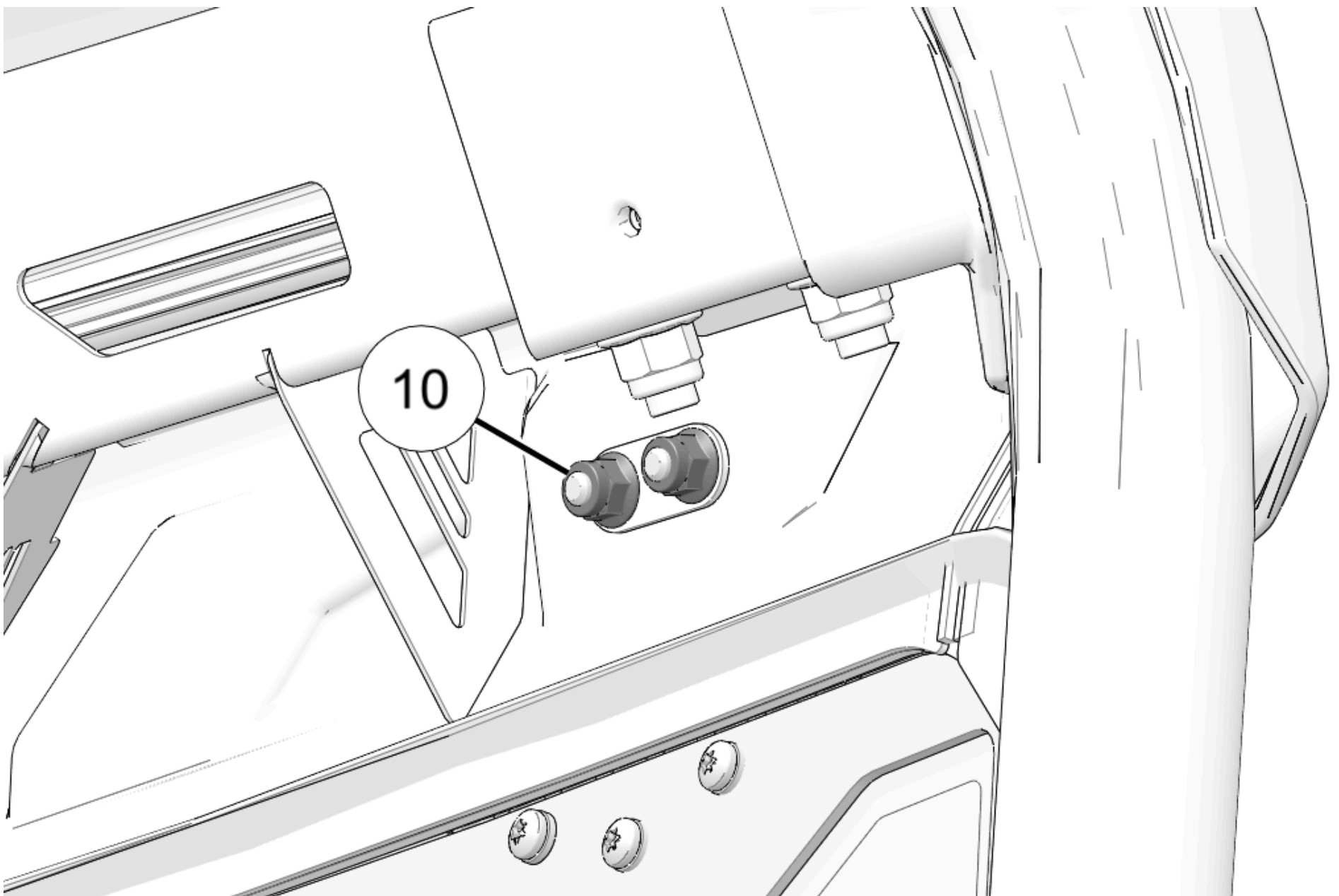
NOTICE

Right side shown, left side similar.



8. Make sure that windshield is centered from side to side, and that seal is in correct position.
9. Torque screws (8) and nuts (10) to specification. Make sure screws (9) are fully seated before torquing nuts (10).

TORQUE	
Screws and Nuts (8),(9):	
20 ft-lbs (27 N·m)	



Instruction Feedback Form

A feedback form has been created for the installer to provide any comments, questions or concerns about the installation instructions. The form is viewable on mobile devices by scanning the QR code or by clicking [HERE](#) if viewing on a PC.



[Site Map](#)

[Privacy Policy](#)

[Accessibility](#)

© 2025 Polaris Inc.