

HD FRONT BUMPER KIT

POLARIS

ENGINEERED PARTS
ACCESSORIES & APPAREL

P/N 2882693, 2883783

APPLICATION

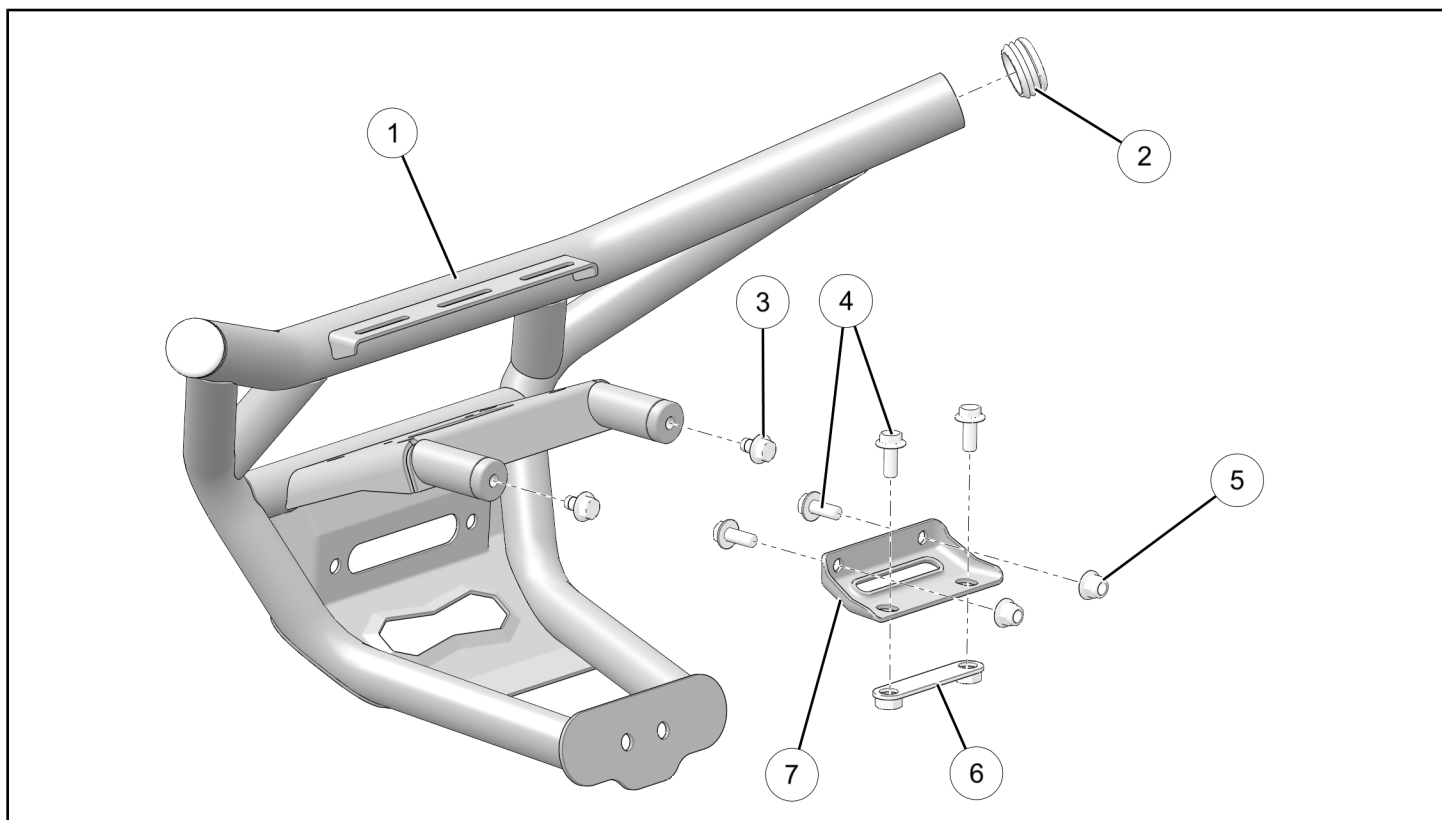
Verify accessory fitment at Polaris.com.

BEFORE YOU BEGIN

Read these instructions and check to be sure all parts and tools are accounted for. Please retain these installation instructions for future reference and parts ordering information.

KIT CONTENTS

This Kit includes:



REF	QTY	PART DESCRIPTION	PART NUMBER
1	1	Bumper, HD Front	-
2	2	Plug	5434191
3*	2	Screw, Hex Flange - M10 X 1.25 X 16	-
4*	4	Screw, Hex Flange - M10 X 1.5 X 25	7519071
5*	2	Nut, Hex Flange, Locking - M10 X 1.5	7547313
6	1	Plate, Attach	-
7	1	Bracket, Bumper Support	-
	1	Instructions	9927962

Items marked (*) are included in Hardware Kit PN 2207093.

TOOLS REQUIRED

- Safety Glasses
- Pliers, Push Pin Rivet
- Screwdriver Set, Torx®
- Socket Set, Metric
- Torque Wrench
- Wrench Set, Metric

IMPORTANT

Your HD Front Bumper Kit is exclusively designed for your vehicle. Please read the installation instructions thoroughly before beginning. Installation is easier if the vehicle is clean and free of debris. For your safety, and to ensure a satisfactory installation, perform all installation steps correctly in the sequence shown.

ASSEMBLY TIME

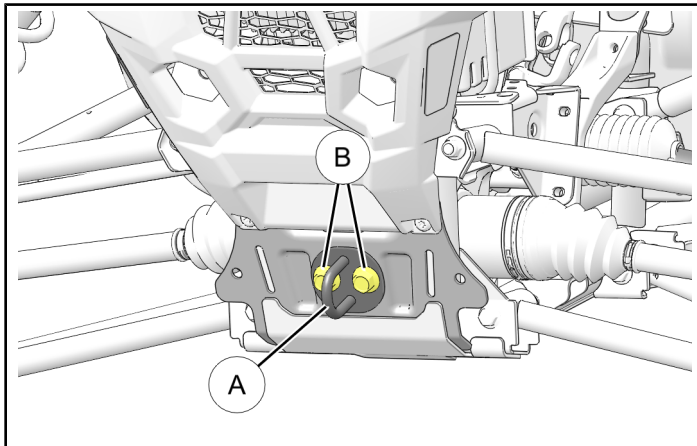
Approximately 25 minutes

NOTE

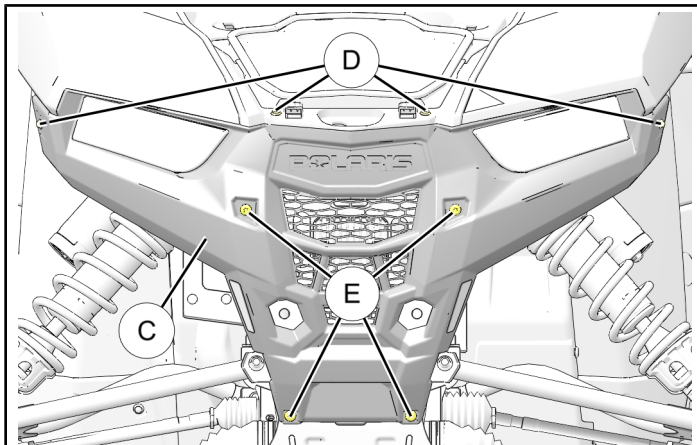
Additional time may be required for optional steps, or to accommodate other installed accessories.

INSTALLATION INSTRUCTIONS

1. Shift vehicle transmission into "PARK". Turn key to "OFF" position and remove from vehicle.
2. Remove hood.
3. Remove tow hook (A) by removing two screws (B). Retain hook and screws.
6. Install bumper support bracket (7) to suspension support structure using four screws (4), two nuts (5), and attach plate (6). Tighten all screws.

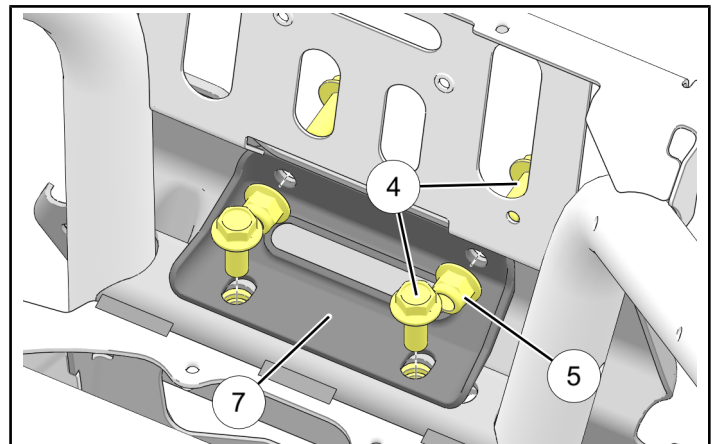
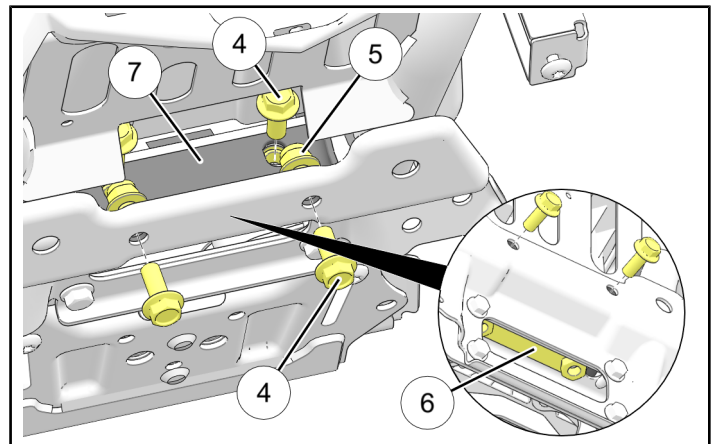


4. Detach electrical harnesses from both headlights.
5. Remove front fascia (C) by removing four push pin rivets (D) and four screws (E). Retain rivets and screws.



NOTE

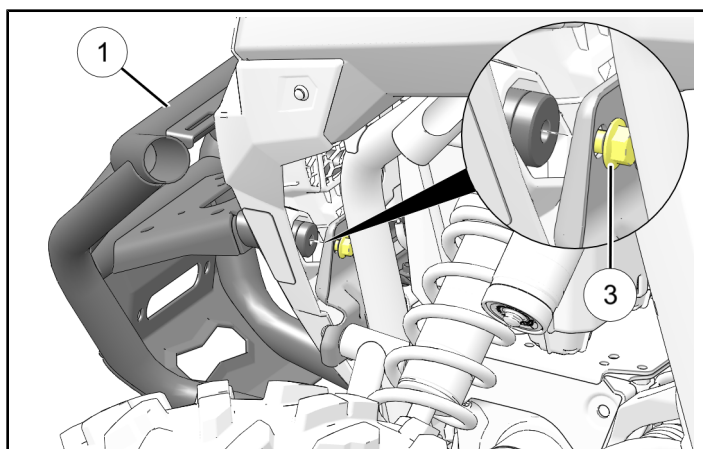
Some chassis elements hidden for clarity.



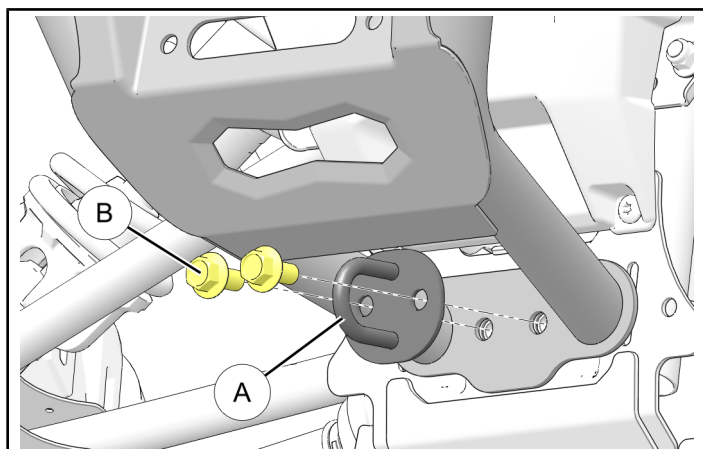
7. Reinstall front fascia ③ and reconnect electrical harnesses to LH and RH headlights. Do not reinstall tow hook at this time.
8. OPTIONAL: If installing winch kit (sold separately), install winch to bumper ①. See instructions included with winch.
9. Loosely install upper portion of bumper ① to suspension support structure using two screws ③.

NOTE

LH side shown; RH side opposite.



10. Reinstall tow hook (A) using two retained screws (B) through bumper into vehicle frame.



FEEDBACK FORM

A feedback form has been created for the installer to provide any comments, questions or concerns about the installation instructions. The form is viewable on mobile devices by scanning the QR code or by clicking [HERE](#) if viewing on a PC.

11. Torque screws ③ and ⑥ to specification.

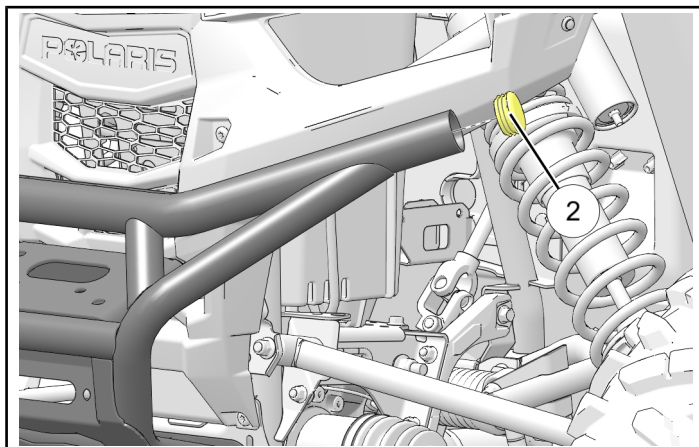
TORQUE

Screws ③: 40 ± 4 ft. lbs. (54 ± 5 Nm)
Screws ⑥: 54 ± 5 ft. lbs. (73 ± 7 Nm)

12. Install two plugs ② into ends of bumper ①.

NOTE

LH side shown; RH side opposite.



FEEDBACK FORM

