

ALUMINUM ROOF KIT



P/N 2879939, 2881592

APPLICATION

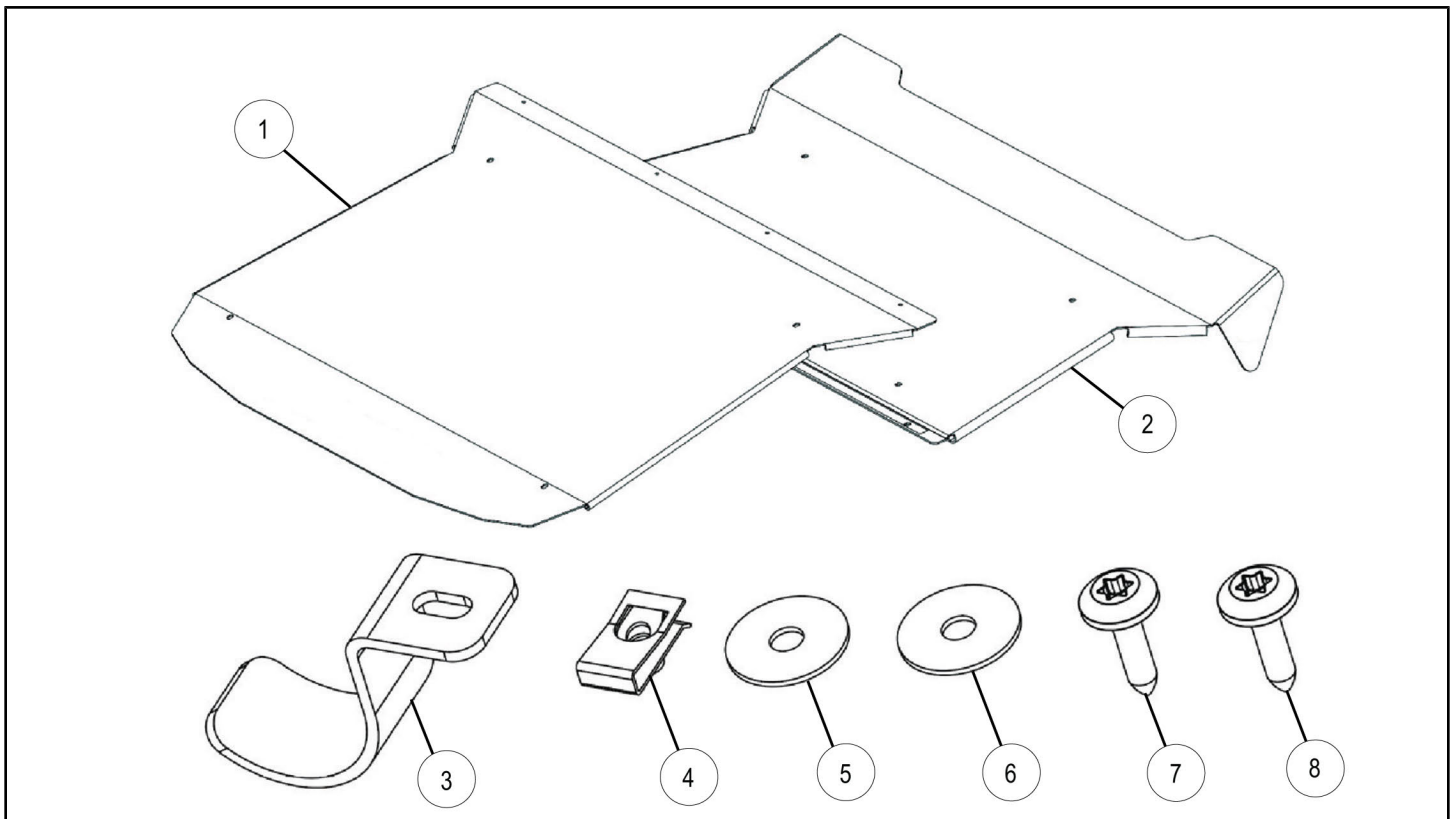
Verify accessory fitment at Polaris.com.

BEFORE YOU BEGIN

Read these instructions and check to be sure all parts and tools are accounted for. Please retain these installation instructions for future reference and parts ordering information.

KIT CONTENTS

This Kit includes:



| REF | QTY | PART DESCRIPTION | PART NUMBER |
|-----|-----|--|--------------------|
| 1 | 1 | Roof Panel, Front (Kit PN 2879939 only) Roof Panel, Front (Kit PN 2881592 only) | 5258485 5262557 |
| 2 | 1 | Roof Panel, Rear (Kit PN 2879939 only) Roof Panel, Front (Kit PN 2881592 only) | 5258486 5262558 |
| 3* | 6 | Clamp | 5258479 |
| 4* | 12 | Clip Nut | 7081305 |
| 5* | 12 | Washer, Rubber - 0.281 X 1.00 X 0.051 | - |
| 6* | 12 | Washer, Steel - 0.281 X 1.00 X 0.051 | 7556329 |
| 7* | 10 | Screw, Torx® - M6 X 1.0 X 25 | 7519650 |

| REF | QTY | PART DESCRIPTION | PART NUMBER |
|-----|-----|----------------------------------|-------------|
| 8* | 2 | Screw, Torx® - M6 X 1.0 X 35 | - |
| 9 | 1 | Tape, Foam - 20 X 3 (not shown) | - |
| 10 | 1 | Tape, Foam - 20 X 10 (not shown) | - |
| | 1 | Instructions | 9924815 |

Items marked (*) are included in Hardware Kit PN 2205286

TOOLS REQUIRED

- Safety Glasses
- Screwdriver Set, Torx®
- Socket Set, Torx® Bit
- Torque Wrench

IMPORTANT

Your ALUMINUM ROOF KIT is exclusively designed for your vehicle. Please read the installation instructions thoroughly before beginning. Installation is easier if the vehicle is clean and free of debris. For your safety, and to ensure a satisfactory installation, perform all installation steps correctly in the sequence shown.

ASSEMBLY TIME

Approximately 30 minutes

INSTALLATION INSTRUCTIONS

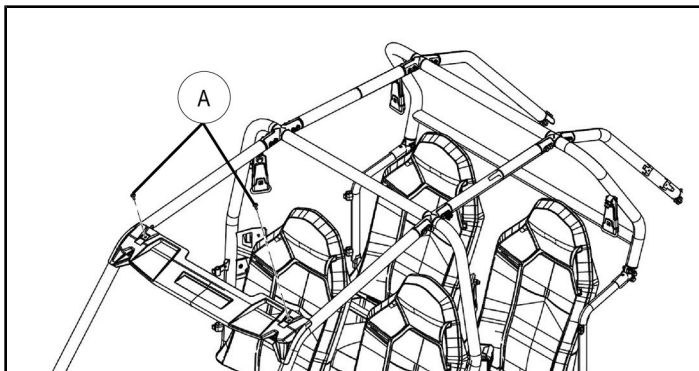
NOTE

It is recommended that two people assemble and install this kit.

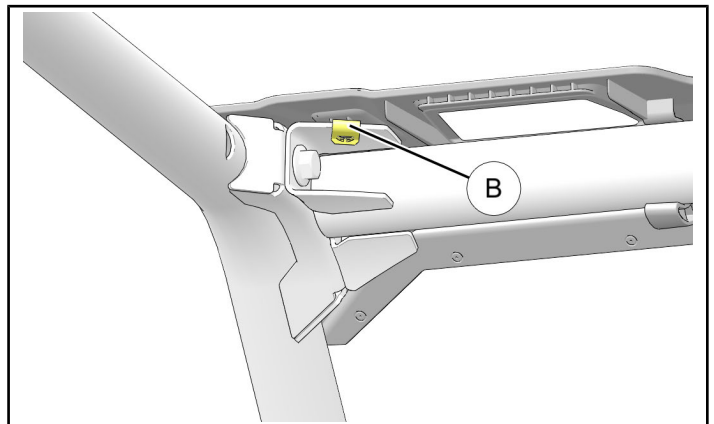
1. Shift vehicle transmission into "PARK". Turn key to "OFF" position and remove from vehicle.
2. Remove two screws (A) from upper rear side of visor as shown. Screws will not be reused.

NOTE

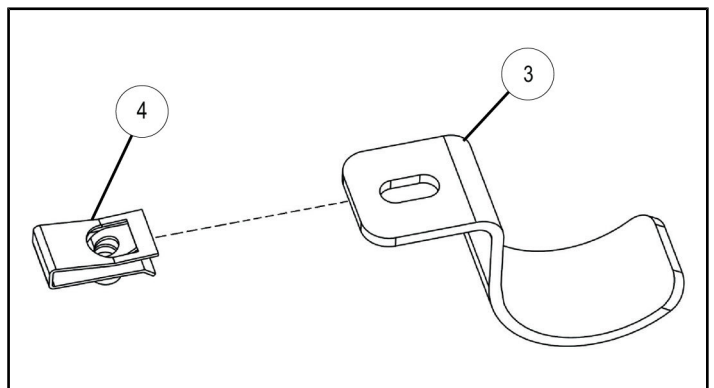
Do not remove two screws from lower front side of visor. Roof panel (1) will be installed on top of visor.



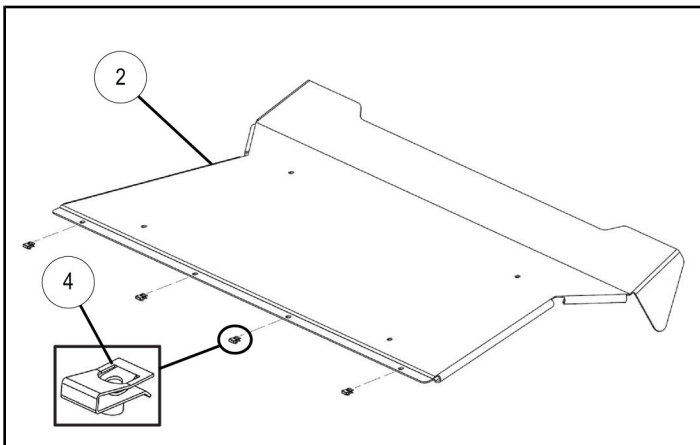
3. OPTIONAL: Two existing clip nuts (B) on outer flanges of front frame may remain if in good condition. Otherwise, replace with new clip nuts (4).



4. Install one clip nut (4) to each of six clamps (3) as shown. Ensure proper orientation: Threaded portion of clip nut is on lower surface of clamp.



5. Lay roof panels ① and ② bottom side down on protective surface.
6. Prepare front edge of REAR roof panel ②.
 - a. Install four clip nuts ④ as shown. Ensure proper orientation: Threaded portion of clip nut is on lower surface of roof edge.



- b. If not already accomplished by factory: Install 3 mm foam tape ⑨ across front edge from LH to RH sides. Notch or punch holes through tape at four clip nuts ④ to facilitate fastener installation.

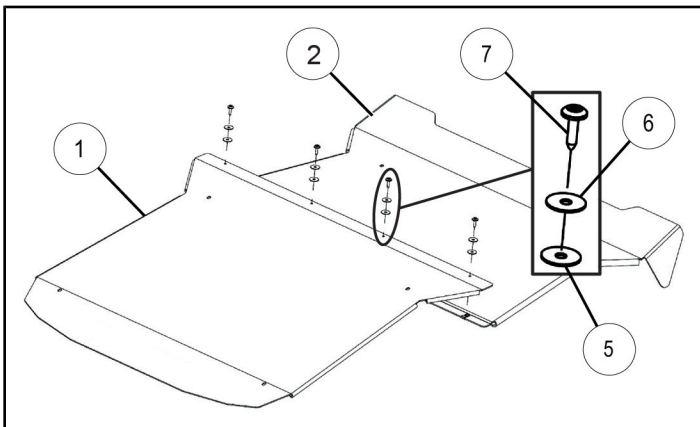
NOTE

Tape will seal seam between front and rear roof panels.

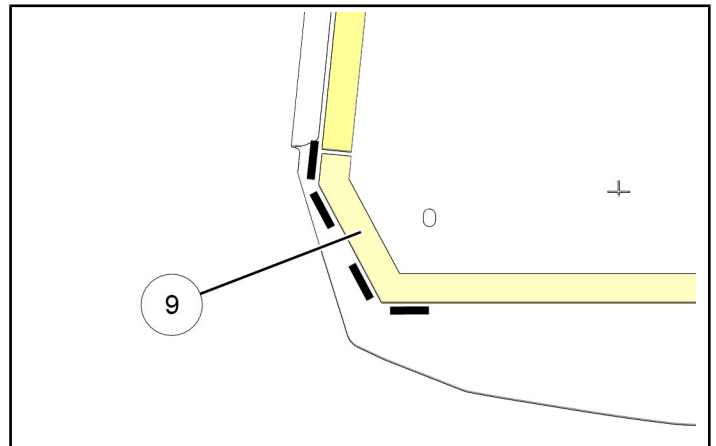
7. Install front roof panel ① to rear roof panel ② using four each 25 mm screws ⑦, steel washers ⑥, and rubber washers ⑤ into nut clips installed in previous step. Ensure steel washer is beneath screw head, and rubber washer is against roof. Torque to specification.

TORQUE

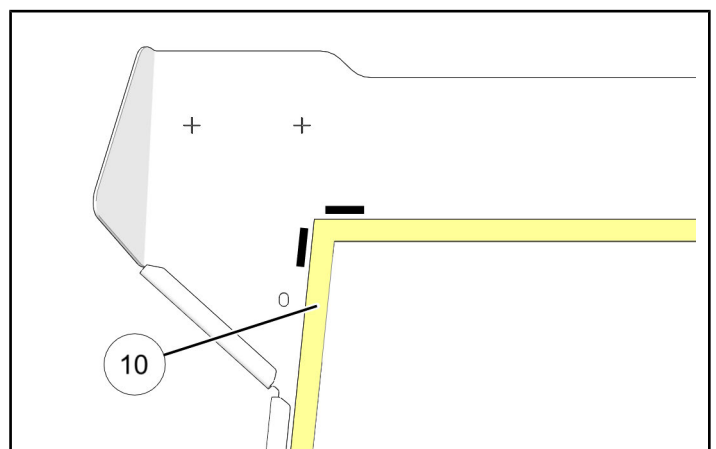
8 ft. lbs. (11 Nm)



8. If not already accomplished by factory: Install foam tape at ROPS contact locations.
 - a. Lift entire roof assembly as a single unit, supporting front and rear panels to prevent bending, and turn roof over.
 - b. Clean front and rear roof panels ①② as required to ensure proper tape adhesion.
 - c. Apply 3 mm foam tape ⑨ to front edge of FRONT roof panel ① (ROPS visor contact location). Tape should be applied on INSIDE edge of alignment marks as shown. Trim as required.

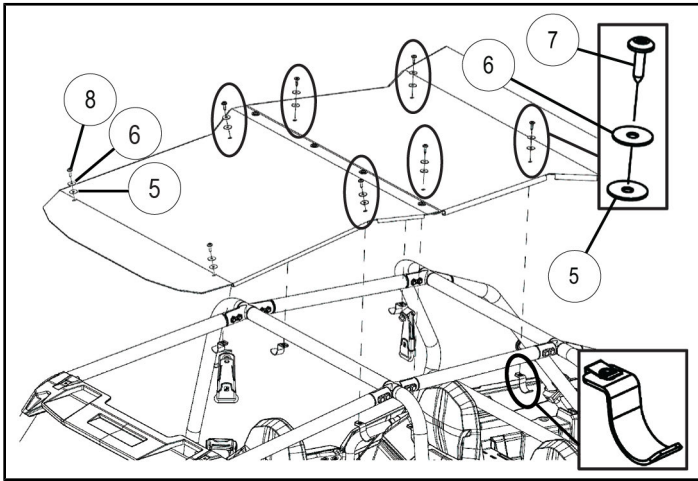


- d. Apply 10 mm foam tape ⑩ to six remaining locations (LH/RH sides of front and rear panels, B-pillar cross member, and C-pillar cross member). Tape should be applied on INSIDE edge of alignment marks as shown. Trim as required.



9. Lift entire roof assembly as a single unit, supporting front and rear panels to prevent bending, and lay on top of ROPS.

10. Loosely install front edge of front roof panel ① to ROPS using two each 35 mm screws ⑧, steel washers ⑥, and rubber washers ⑤ as shown. Ensure steel washer is beneath screw head, and rubber washer is against roof.



11. Loosely install roof panels ① and ② to ROPS using six each clamp/nut clip assemblies, 25 mm screws ⑦, steel washers ⑥, and rubber washers ⑤ as shown above. Ensure steel washer is beneath screw head, and rubber washer is against roof.

12. Torque all screws ⑦ and ⑧ to specification.

TORQUE

8 ft. lbs. (11 Nm)

