

LOWER ALUMINUM DOOR KIT

P/N 2879510

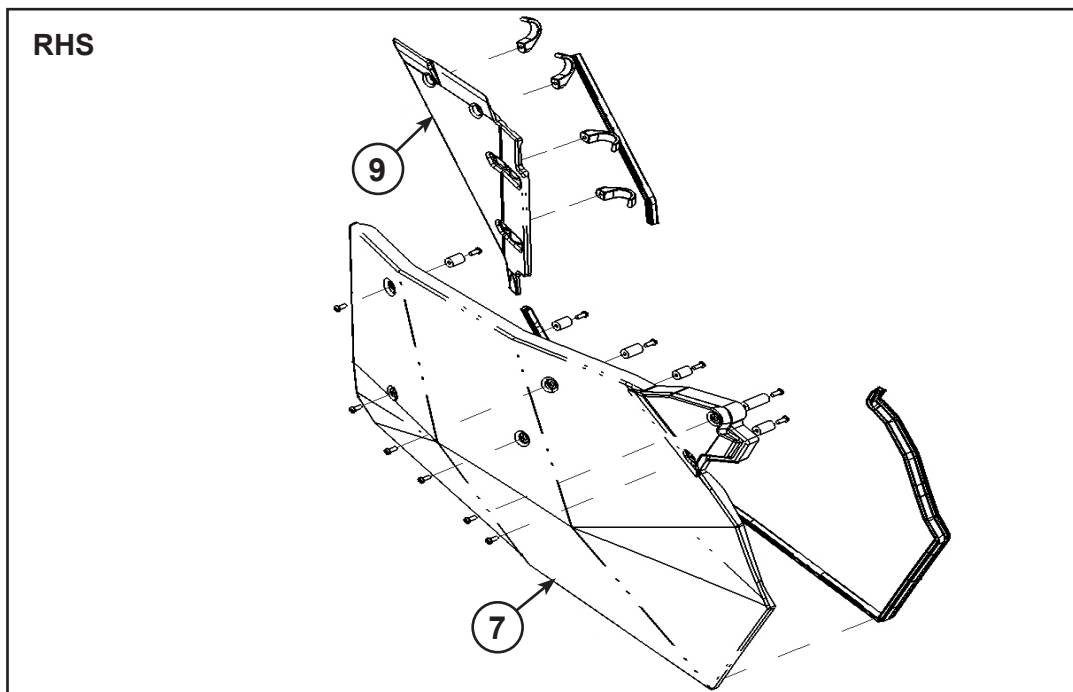
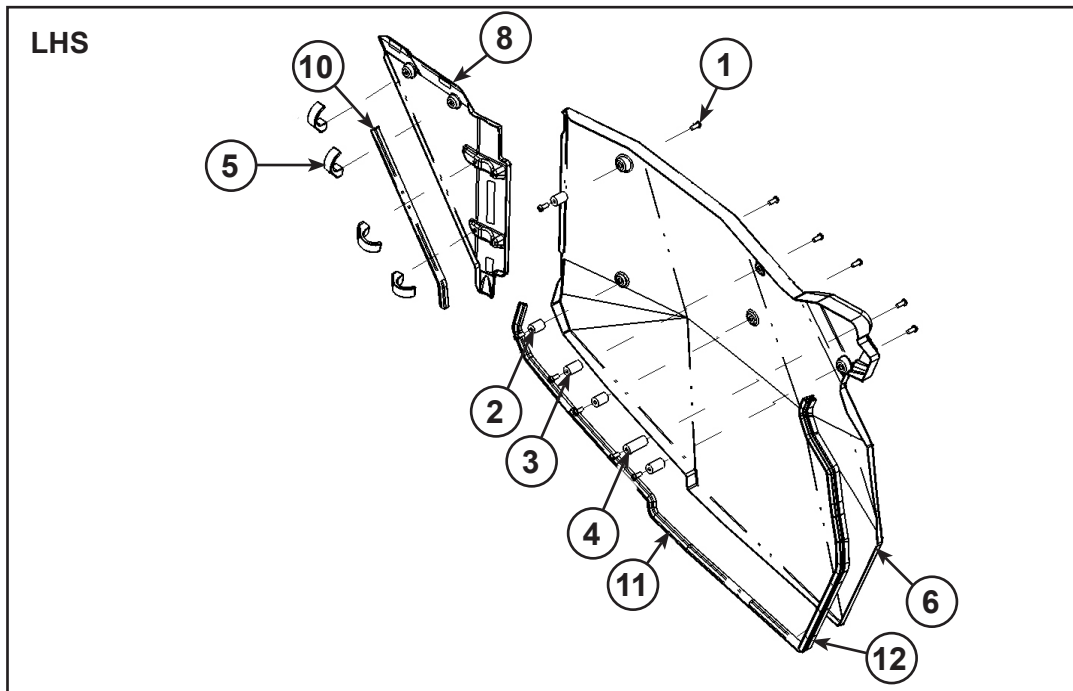
Application

RZR XP 1000

POLARIS

ENGINEERED PARTS
ACCESSORIES & APPAREL

Before you begin, read these instructions twice and check to be sure all parts and tools are accounted for. Please retain these installation instructions for future reference and parts ordering information.



Kit Contents:

<u>Ref</u>	<u>Qty</u>	<u>Part Description</u>	<u>Part Number</u>
1*	32	Screw-TXBH-M6X1.0X12 12.9 ZPB	-
2*	6	Small Spacer Mount	5139035
3*	4	Meduim Spacer Mount	5139036
4*	2	Large Spacer Mount	5139037
5*	8	J-Mount, Aluminum Door	5139153
6	1	Aluminum Door Skin, LH	5258357
7	1	Aluminum Door Skin, RH	5258358
8	1	Aluminum Door Pillar, LH	5258360
9	1	Aluminum Door Pillar, RH	5258361
10*	2	Aluminum Door Seal	5522024-310
11*	2	Aluminum Door Seal	5522024-820
12*	2	Foam-Withstrap, Door, FRT	5522083-550
	1	Instructions	9924756

Items marked (*) are included in Hardware Kit PN 2205254.

Tools Required:

Safety Goggles

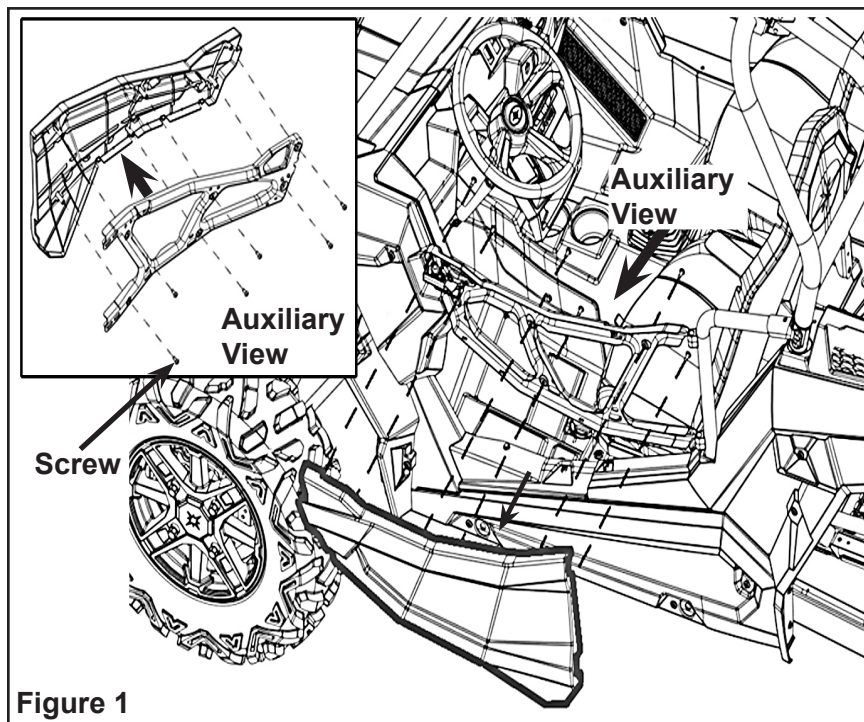
Torx Set

APPROXIMATE ASSEMBLY TIME: 25-30 minutes

IMPORTANT: Your Polaris LOWER ALUMINUM DOOR is exclusively designed for your vehicle. Please read the installation instructions thoroughly before beginning. Installation is easier if the vehicle is clean and free of debris. For your safety and to ensure a satisfactory installation, perform all installation steps correctly in the sequence shown.

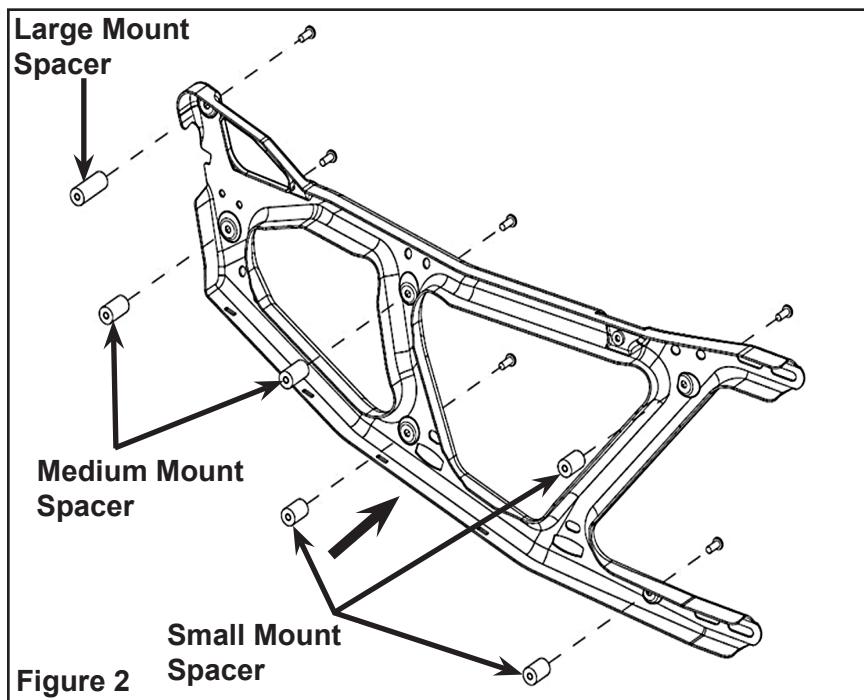
INSTALLATION INSTRUCTIONS:

1. Place the vehicle in "PARK" and turn the key to "OFF" position. Remove the key from the vehicle.
2. Remove the door skin from the door frame by removing screws from six locations. Figure 1.

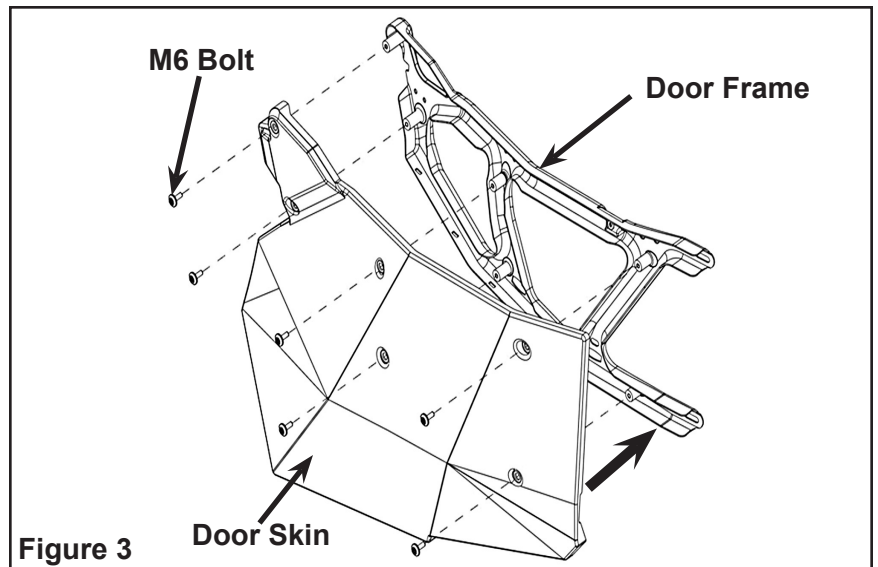


3. Mount the spacers on the door frame (PN 5139035, PN 5139036 and PN 5139037) using six M6 screws. Figure 2.

NOTE: Torque to 4 ft. lbs. (5.42 Nm).



4. Mount the aluminum door skin (PN 5258357) loosely on the door frame with six M6 screws. Figure 3.
5. Make sure door foam is in place. Adjust the door for even level around door and make sure door shuts.
6. Torque to 4 ft. lbs. (5.42 Nm).



7. Using J-mount (PN 5139153) and M6 screws, install the left hand aluminum door pillar (PN 5258360) to the bolster at four locations. Figure 4.
- NOTE:** Torque to 4 ft. lbs. (5.42 Nm).
8. Repeat all the above steps for passenger side.

