

REAR MUDGUARD KIT



P/N 2883502

INTERNATIONAL INSTRUCTIONS

DE DEUTSCH

Laden Sie die neuesten PDF-Anweisungen von www.indianmotorcycle.de herunter.

FR FRANÇAIS

Télécharger les dernières instructions en format PDF sur www.indianmotorcycle.fr.

IT ITALIANO

Scarica l'ultima versione delle istruzioni in formato PDF da www.indianmoto.it.

EN ENGLISH

Download the latest PDF instructions from www.indianmotorcycle.com.

ES ESPAÑOL

Descargue las instrucciones más recientes en formato PDF de www.indianmotorcycle.mx / www.indianmotorcycle.es.

ZH 中文

从www.indianmotorcycle.cn 下载最新的PDF说明。

1



2



3



4



APPLICATION

Verify accessory fitment at www.indianmotorcycle.com.

BEFORE YOU BEGIN

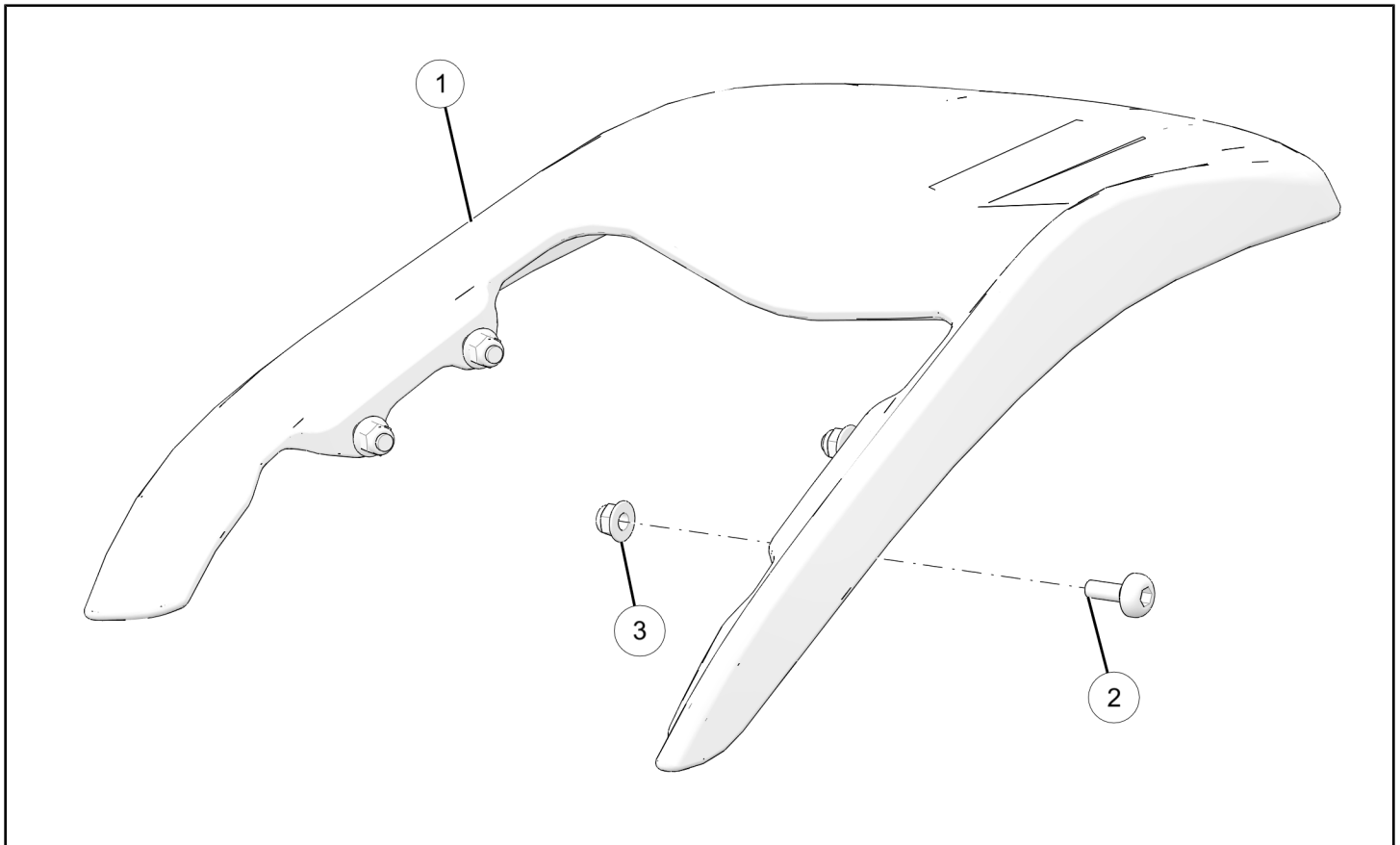
Read these instructions and check to be sure all parts and tools are accounted for. Please retain these installation instructions for future reference and parts ordering information.

REQUIRED SOLD SEPARATELY

Only parts for installation of the *Rear Mud Guard Kit* are included. Prior installation of the following additional kit is required (sold separately):

- *Accessory Mounting Kit*, P/N 2883842

KIT CONTENTS



REF	QTY	PART DESCRIPTION	P/N AVAILABLE SEPARATELY
1	1	Mudguard-Rear	N/A
2	4	Screw-Hex Button Head, M6 x 1.0 X 15	7519774
3	4	Nut-Hex Flange, M6 x 1.0	7547453
	1	Instructions	9929484

TOOLS REQUIRED

- Safety Glasses
- Hex Key Set, Metric
- Socket Set, Hex Bit, Metric
- Torque Wrench

IMPORTANT

Your accessory kit is exclusively designed for your vehicle. Please read the installation instructions thoroughly before beginning. Installation is easier if the vehicle is clean and free of debris. For your safety, and to ensure a satisfactory installation, perform all installation steps correctly in the sequence shown.

INSTALLATION INSTRUCTIONS

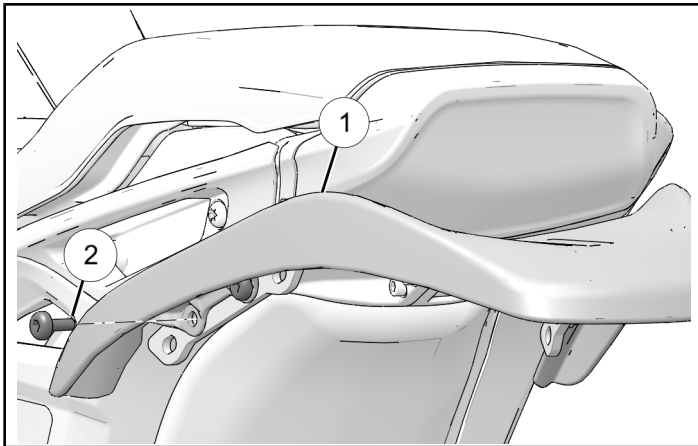
VEHICLE PREPARATION

GENERAL

1. Turn key or ignition switch to OFF position and remove key.
2. Ensure motorcycle is parked on a flat surface, kickstand is fully extended, and vehicle is stable prior to installation.
3. Install *Accessory Mounting Kit* P/N 2883842, as per instructions.

ACCESSORY INSTALLATION

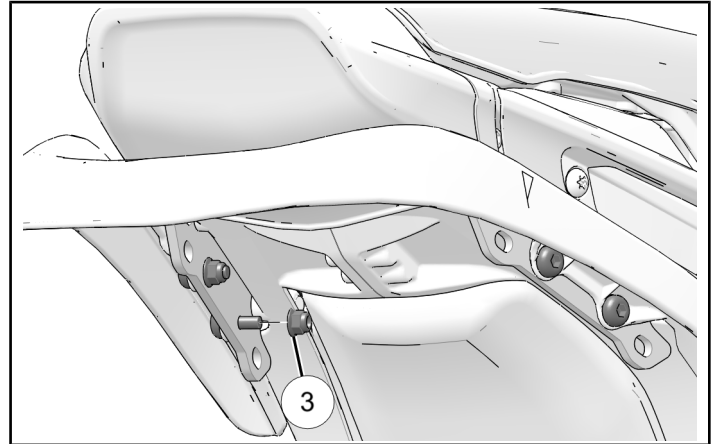
1. Align mudguard ① with middle holes of accessory mount and begin installation by passing four screws ② through mudguard and accessory mount.



2. Complete installation with four nuts ③. Counter-hold nuts ③ while torquing screws ②.

TORQUE

Rear Mudguard Fasteners ②:
96 in-lbs (11 N·m)



FEEDBACK FORM

A feedback form has been created for the installer to provide any comments, questions or concerns about the installation instructions. The form is viewable on mobile devices by scanning the QR code or by clicking [HERE](#) if viewing on a PC.

