

REAR BUMPER KIT



P/N 2883133, 2884020

APPLICATION

Verify accessory fitment at [Polaris.com](https://www.polaris.com).

IMPORTANT

This Rear Bumper Kit is not compatible with the following:

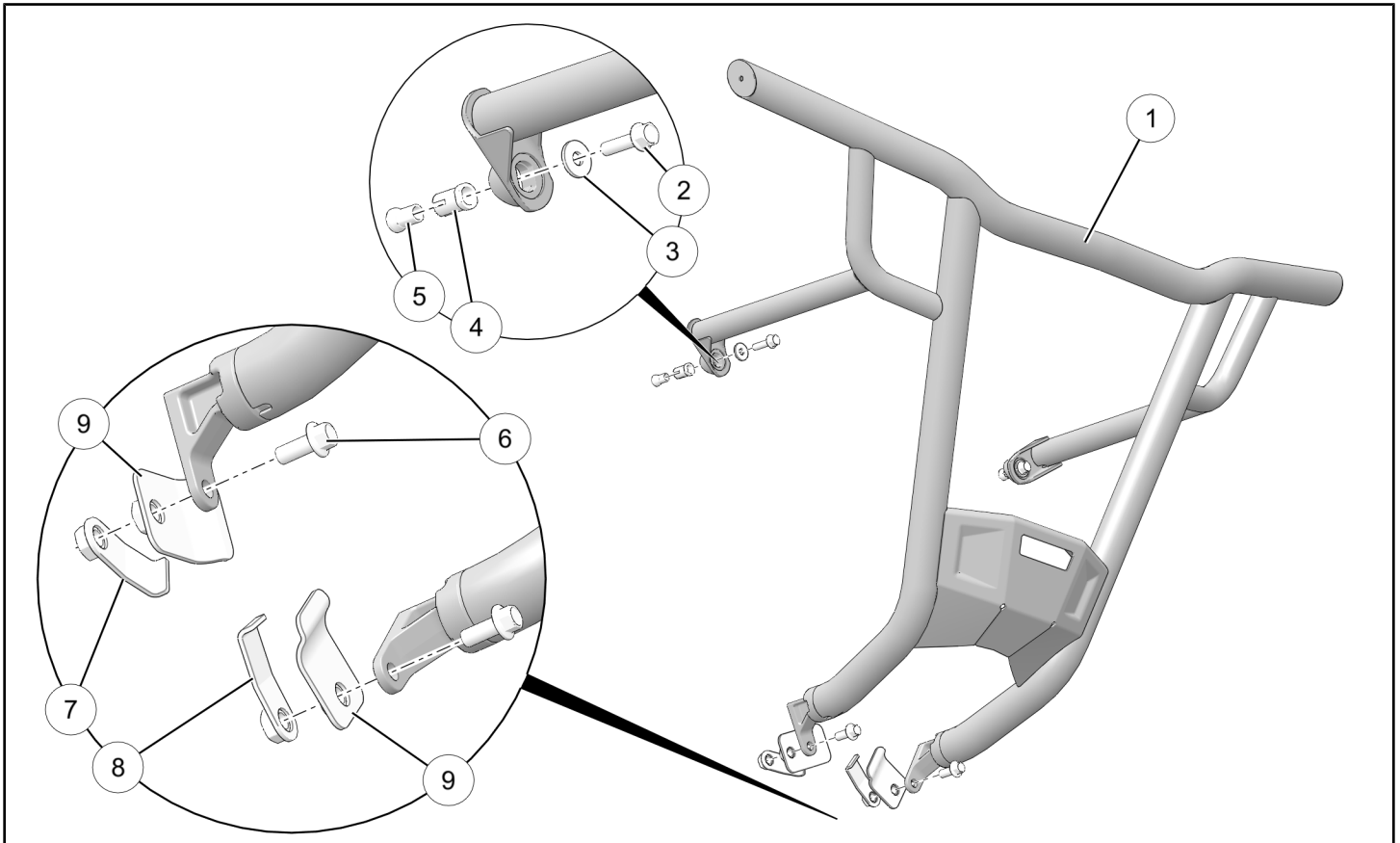
- RZR XP® 1000 HIGH LIFTER
- RZR XP® 4 1000 HIGH LIFTER
- RZR XP® 1000 TRAILS AND ROCKS
- Any RZR XP® vehicle with the High Clearance Radius Rod Kit (PN 2879523)

BEFORE YOU BEGIN

Read these instructions and check to be sure all parts and tools are accounted for. Please retain these installation instructions for future reference and parts ordering information.

KIT CONTENTS

This Kit includes:



REF	QTY	PART DESCRIPTION	PART NUMBER
1	1	Bumper	-
2	2	Screw, Hex Flange - M8 X 1.25 X 30	7520234
3	2	Washer - 0.327 X 0.875 X 0.090	7556341
4	2	Expansion Tube, Anchor	5337853
5	2	Wedge, Anchor	5632958
6	2	Screw, Hex Flange - M10 X 1.5 X 25	7518908
7	1	Backer Plate, LH (RZR XP® TURBO S)	5265912-458
8	1	Backer Plate, RH (RZR XP® TURBO S)	5266278-458
9	2	Backer Plate (RZR XP® 1000, XP® 4 1000, XP® TURBO, XP® 4 TURBO) (Kit 2884020 only)	5260199-458
	1	Instructions	9928681

TOOLS REQUIRED

- Safety Glasses
- Torque Wrench
- Socket Set, Metric

IMPORTANT

Your Rear Bumper Kit is exclusively designed for your vehicle. Please read the installation instructions thoroughly before beginning. Installation is easier if the vehicle is clean and free of debris. For your safety, and to ensure a satisfactory installation, perform all installation steps correctly in the sequence shown.

INSTALLATION INSTRUCTIONS

NOTE

Polaris recommends two people assemble and install this kit.

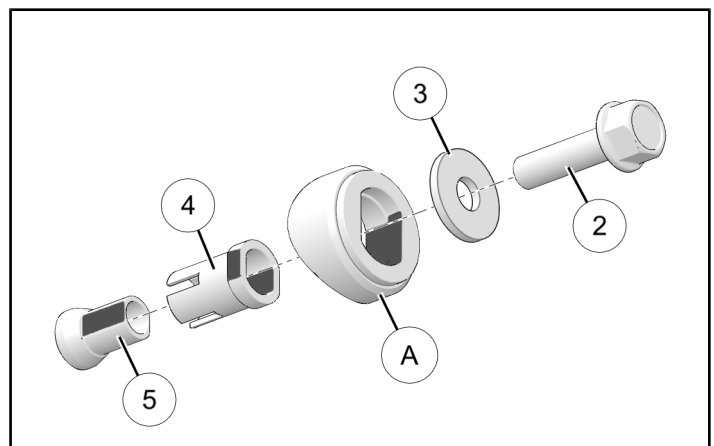
- Shift vehicle transmission into "PARK". Turn ignition switch to "OFF" position and remove key.
- Install upper bumper mounting fasteners.
 - Two expansion anchor assemblies ②③④⑤ are pre-installed to bumper ①. Verify anchor assembly is fully nested in welded socket ①:
 - EXTERIOR flat faces of wedge ⑤ are aligned with INTERIOR flat faces of tube ④
 - EXTERIOR flat faces of tube ④ are aligned with INTERIOR flat faces of welded socket ①

IMPORTANT

Failure to ensure flat alignment may result in incomplete fastener engagement.

NOTE

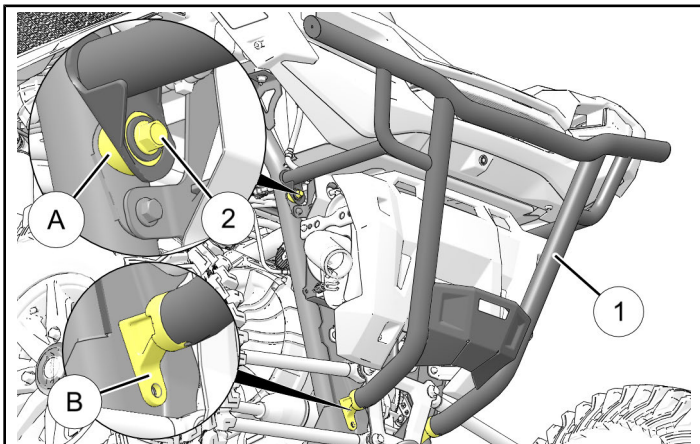
Bumper mount tubing hidden for clarity.



- b. Lift bumper ① into position, inserting tube ④ and wedge ⑤ into LH and RH chassis mounting holes until socket A is flush with chassis tubing.

NOTE

LH shown; RH opposite.



- c. While ensuring bumper ① is firmly seated against chassis frame at all four mounting locations (two each upper A and lower B), tighten two screws ②. Torque to specification.

IMPORTANT

Bumper must be firmly seated against chassis at all four locations before tightening screws. Anchor assemblies are not intended to draw bumper and chassis together, and after anchor begins expanding repositioning may become difficult.

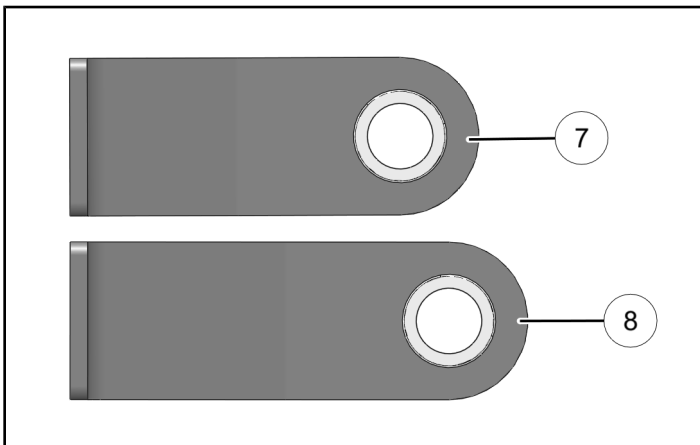
TORQUE

16 ft. lbs. (22 Nm) \pm 10%

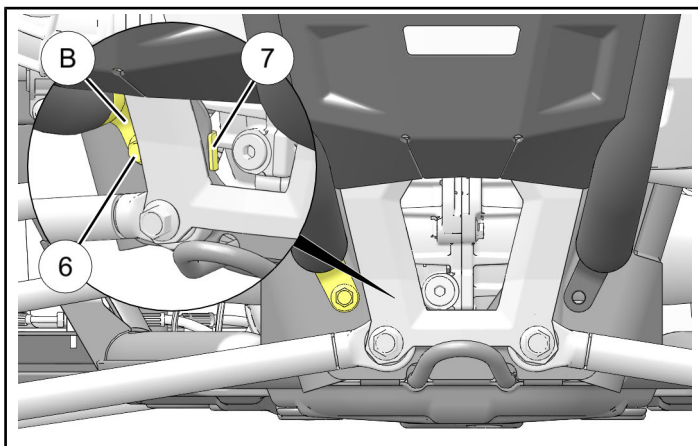
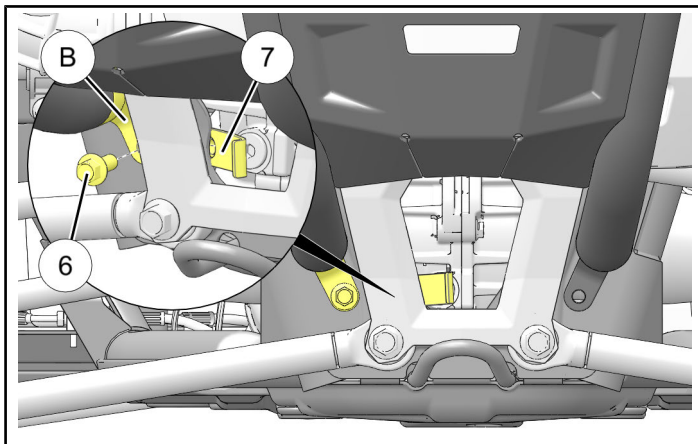
3. Install lower bumper mounting fasteners.

RZR XP® TURBO S

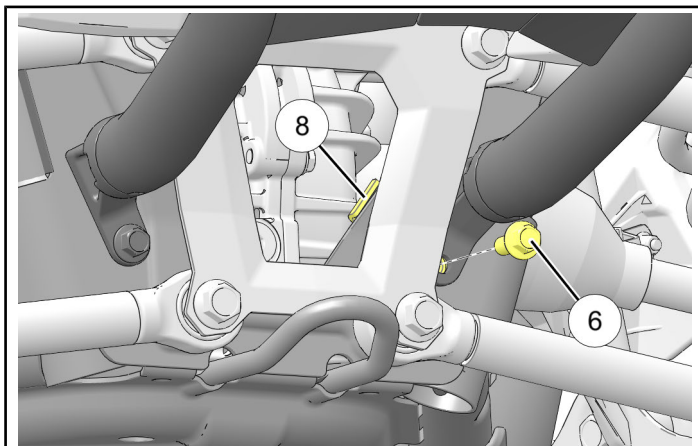
- a. Identify LH backer plate ⑦ and RH backer plate ⑧; LH plate is shorter than RH plate.



- b. Insert LH backer plate ⑦ through opening in chassis structure, then loosely install bumper mounting bracket B to chassis using screw ⑥. Ensure flange on backer plate hooks edge of chassis structure as shown.



- c. Repeat installation on RH side using RH backer plate ⑧ and screw ⑥.



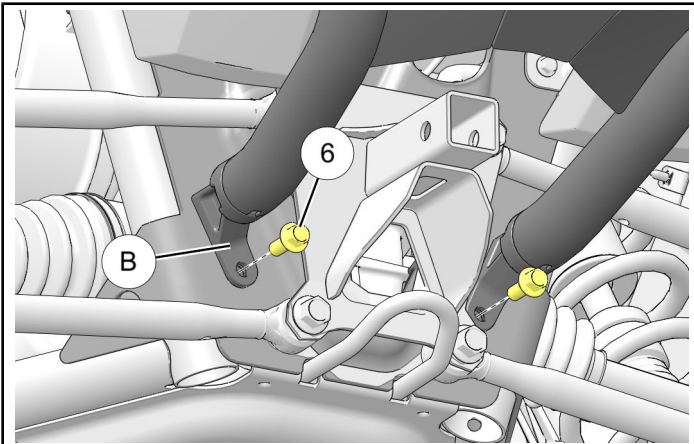
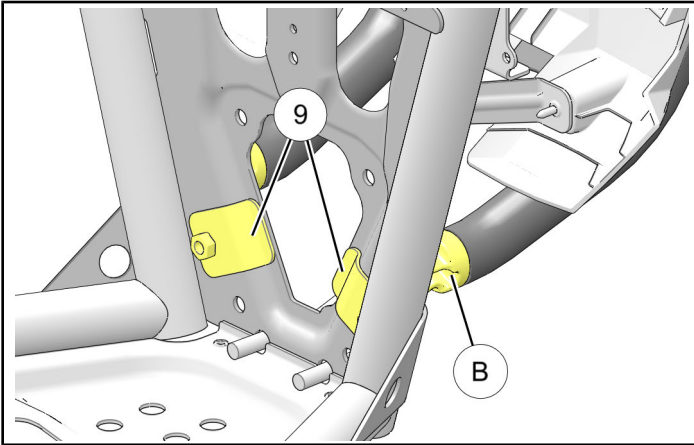
- d. Torque two screws ⑥ to specification.

TORQUE

40 ft. lbs. (54 Nm) \pm 10%

RZR XP® 1000, XP® 4 1000, XP® TURBO, or XP® 4 TURBO

- a. Nest backer plate ⑨ against forward side of chassis structure, then loosely install bumper mounting bracket ⑧ to chassis using screw ⑥. Repeat for RH side.



- b. Torque two screws ⑥ to specification.

TORQUE

40 ft. lbs. (54 Nm) ± 10%

4. OPTIONAL: To remove bumper perform the following steps.

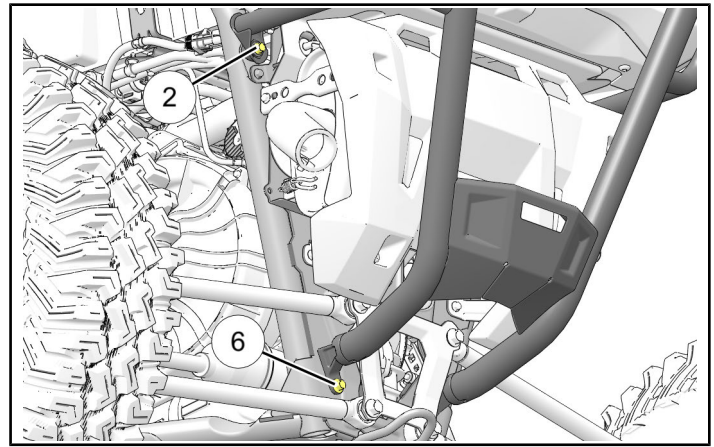
CAUTION

Bumper weighs approximately 21 lbs. (9.4 Kg). Failure to adequately support bumper during removal may result in personal injury or damage to equipment.

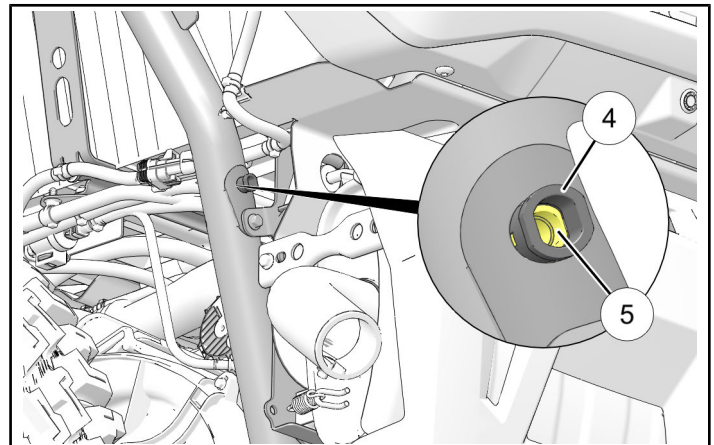
- a. Remove screws ② and ⑥ from each side of bumper, then remove bumper.

NOTE

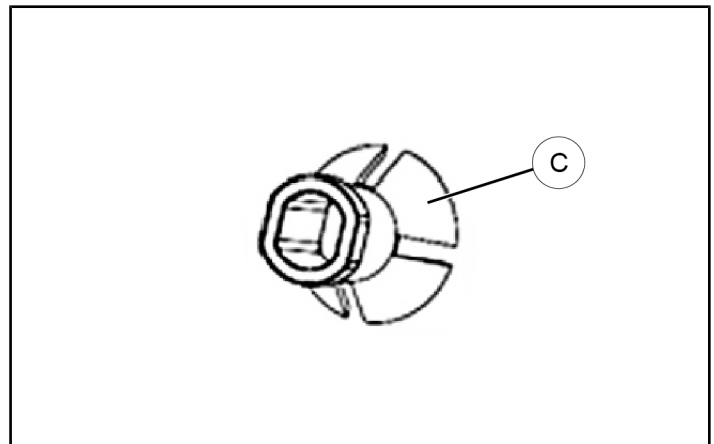
Bumper may need to be wobbled back and forth to allow welded sockets ① to pass over anchor expansion tubes ④. See Step 2a for detail.



- b. Using pin punch, drive wedge ⑤ forward through tube ④ into chassis tubing at both upper mounting locations.



- c. Using arc-joint pliers, grasp tube ④ and remove from chassis frame at both upper mounting locations. During removal tabs ③ will straighten. Discard old hardware.



FEEDBACK FORM

A feedback form has been created for the installer to provide any comments, questions or concerns about the installation instructions. The form is viewable on mobile devices by scanning the QR code or by clicking [HERE](#) if viewing on a PC.

FEEDBACK FORM

