

REAR LOW PROFILE BUMPER KIT



P/N 2880560-XXX, 2881589-XXX

APPLICATION

All RZR XP® 1000 and All RZR XP®4 1000 models

Verify accessory fitment at [Polaris.com](https://www.polaris.com).

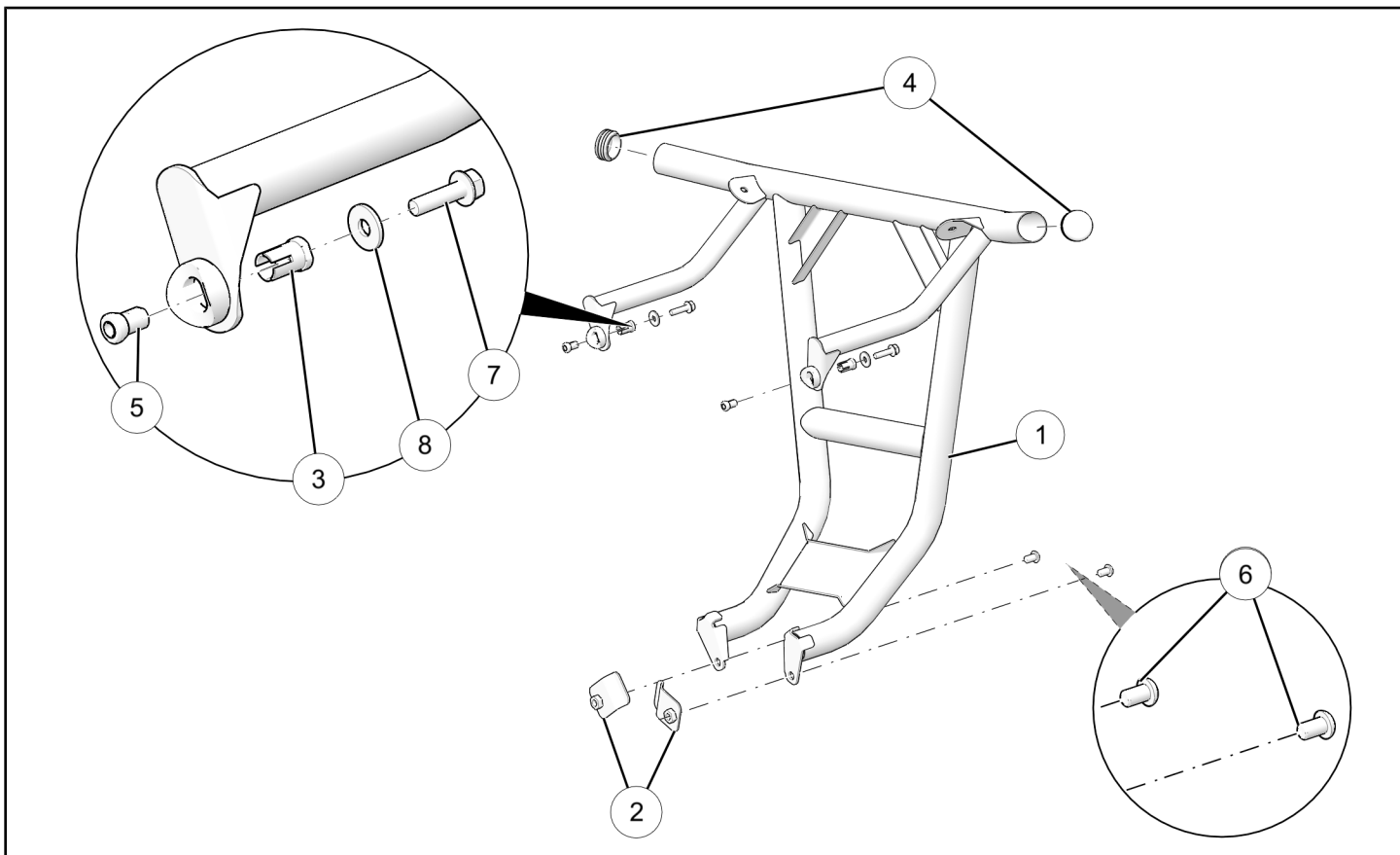
BEFORE YOU BEGIN

Read these instructions and check to be sure all parts and tools are accounted for. Please retain these installation instructions for future reference and parts ordering information.

KIT CONTENTS

This kit contains parts for installation of the Rear Low Profile Bumper Kit only. Prior installation of the High Clearance Radius Rods Kit, PN 2879523-458, is also required (sold separately).

This Kit includes:



REF	QTY	PART DESCRIPTION	PART NUMBER	INCLUDED IN HARDWARE KIT
1	1	Bumper Weld, Rear, High Clearance	1020963-XXX	-
2	2	Spacer Place, Lower, Rear, M10	5260199-458	2205692
3	2	Expansion Tube, Anchor	5337853	2205692
4	2	Bumper Cap	5434191	2205692
5	2	Wedge Anchor, Threaded	5632598	2205692

REF	QTY	PART DESCRIPTION	PART NUMBER	INCLUDED IN HARDWARE KIT
6	2	Screw, Torx® Button Head, M10 X 1.5 X 16	7520163	2205692
7	2	Screw, Hex Flange, M8 X 1.25 X 30	7520234	2205692
8	2	Washer, 0.327 X 0.875 X 0.090	7556341	2205692
	1	Instructions	9925528	-

TOOLS REQUIRED

- Safety Glasses
- Socket Set, Metric
- Socket Set, Torx® Bit
- Torque Wrench
- Wrench Set, Metric
- Wrench Set, Torx®

IMPORTANT

Your Rear Low Profile Bumper Kit is exclusively designed for your vehicle. Please read the installation instructions thoroughly before beginning. Installation is easier if the vehicle is clean and free of debris. For your safety, and to ensure a satisfactory installation, perform all installation steps correctly in the sequence shown.

INSTALLATION INSTRUCTIONS

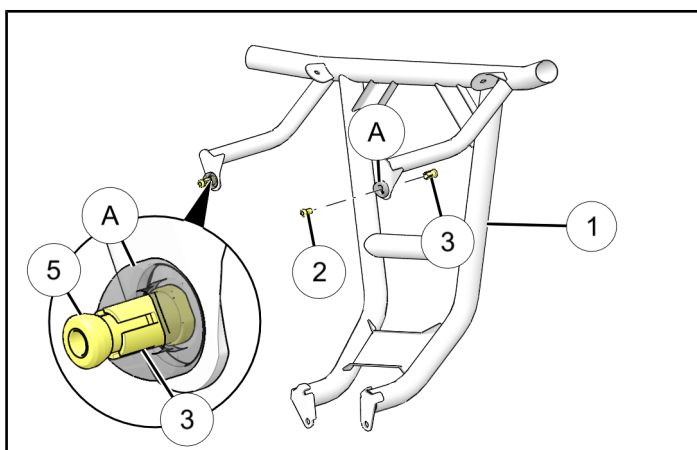
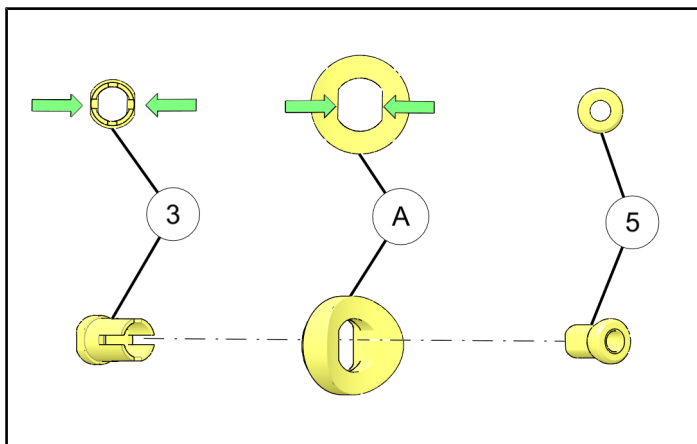
1. Shift vehicle transmission into **PARK**. Turn key to **OFF** position and remove from vehicle.
2. Ensure vehicle is parked on flat surface and is stable prior to installation.

REAR LOW PROFILE BUMPER INSTALLATION

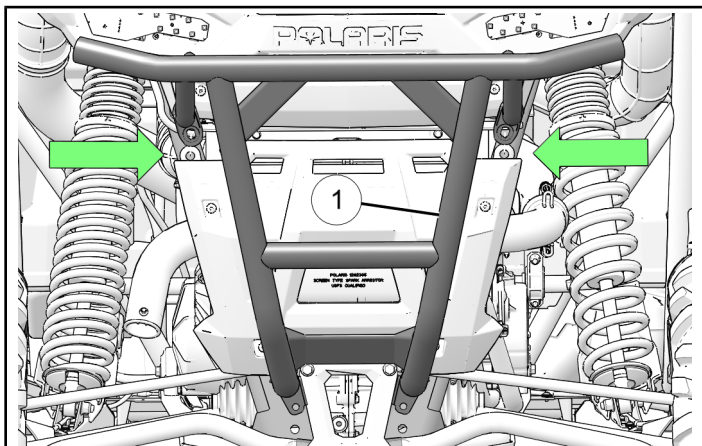
1. Insert two expansion anchors ③ inside rear bumper mounts ① and two wedge anchors ⑤ from backside of rear bumper mounts ① with all flat faces of mounts and anchors aligned.

NOTE

Ensure flat faces of mounts and anchors are aligned.



2. Mount upper front bumper ①.
 - a. Align front bumper ① with top holes in vehicle frame.



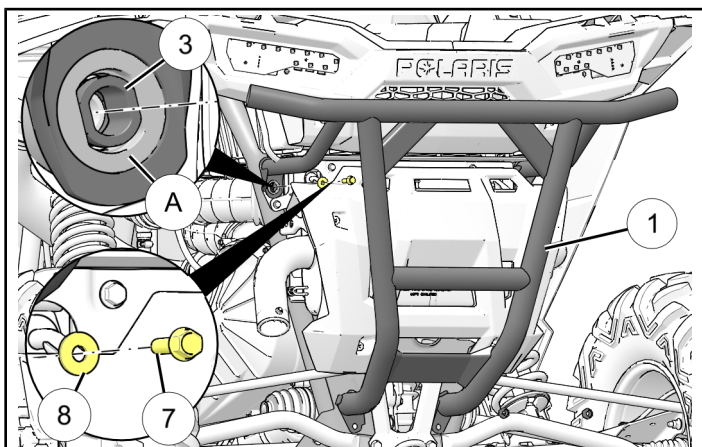
- b. Hand-tighten two bolts ⑦ and two washers ⑧.

NOTE

During mounting, ensure flat faces of anchors and mounts align with each other. Expansion anchors ③ must be properly seated for rear bumper installation.

IMPORTANT

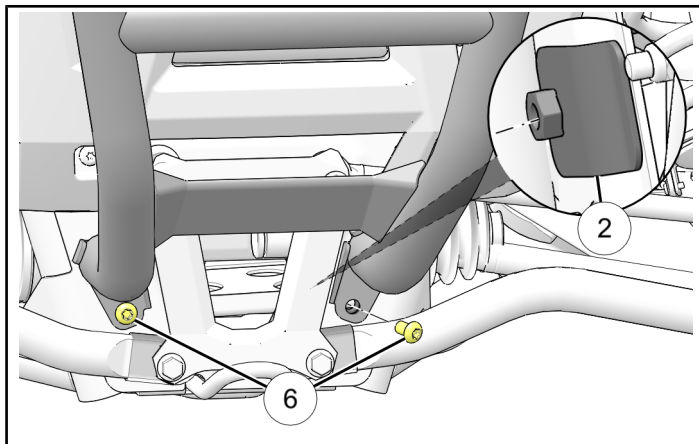
Do not torque bolts ⑦ at this time.



3. Mount lower front bumper ①.
 - a. Place two spacer plates ② on backside of vehicle frame and align holes of spacer plates ② with holes of bumper mount before hand-tightening two bolts ⑥.

IMPORTANT

Do not torque bolts ⑥ at this time.



4. Complete installation.
 - a. Ensure top wedge anchors ⑤ and expansion tubes ③ are fully seated in mount. Continue to apply pressure to two screws ⑦ while torquing to ensure expansion anchors ③ remain seated.

TORQUE

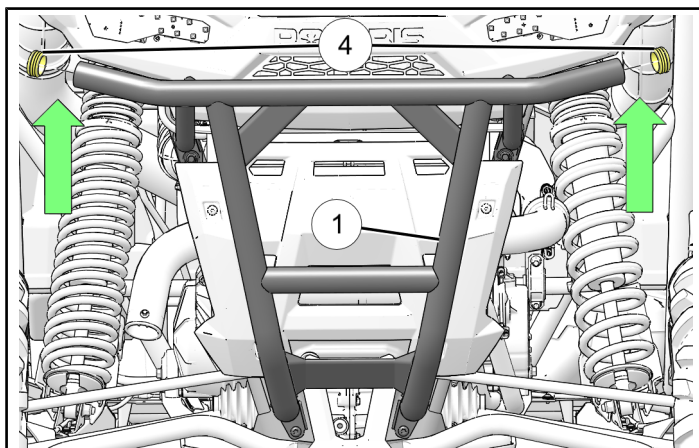
20 ft. lbs. (68 Nm)

- b. Torque two screws ⑥ to specification.

TORQUE

50 ft. lbs. (68 Nm)

- c. Firmly push in bumper caps ④ on each end of bumper ①.

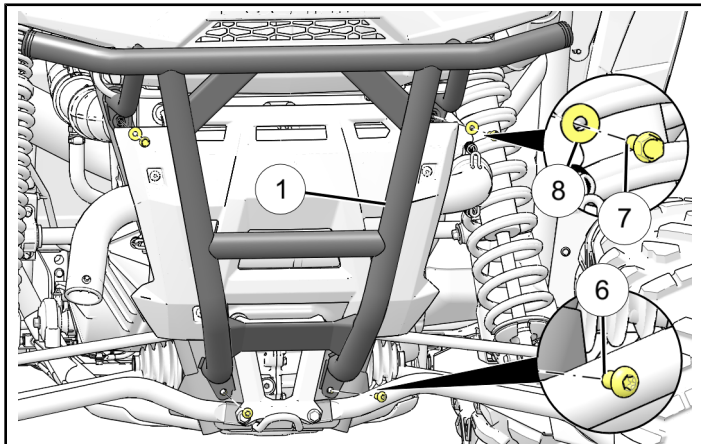


REAR LOW PROFILE BUMPER REMOVAL

IMPORTANT

Hardware Kit (PN 2205692) is required to reinstall *Rear Low Profile Bumper Kit*.

1. Remove and discard two top bolts ⑦ and two lower bolts ⑥ to remove rear bumper ①.



2. Remove expansion anchors ③ with pliers.

NOTE

Expansion anchors ③ become distorted during installation and must be removed prior to reinstallation of *Rear Low Profile Bumper Kit*.

FEEDBACK FORM

A feedback form has been created for the installer to provide any comments, questions or concerns about the installation instructions. The form is viewable on mobile devices by scanning the QR code or by clicking [HERE](#) if viewing on a PC.

FEEDBACK FORM

