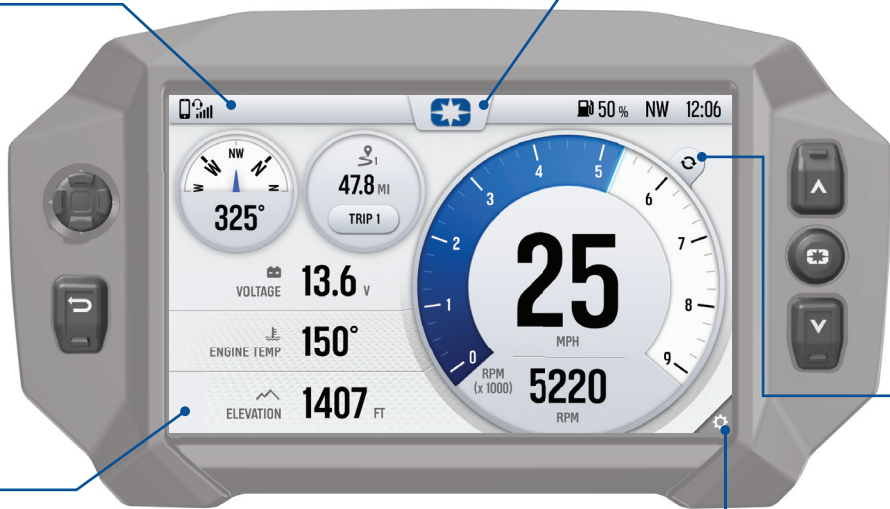


# POLARIS RIDECOMMAND

For software updates, go to [ridecommand.polaris.com](http://ridecommand.polaris.com)

## QUICK START GUIDE



### Top Bar

- Signal Strength
- Headset
- Apps & Controls
- Fuel %
- NW Compass
- 12:06 Clock

### Apps & Controls

Tap to see vehicle controls, settings, and a full list of available features.

- Gauges
- Music
- Phone
- Maps
- Current Ride
- Rides & Waypoints

### Configurable Gauges

A customizable set of ride and vehicle information.

- Trip Meters
- Elevation
- Fuel %
- Voltage
- Compass
- Engine Temp

### Display Buttons



Press the 5-way control to select items on the screen. Use the center button to select item.



App-specific behavior (zoom on maps, cycle gauge screens, etc).



Press to go back one level or close pop-up. Also cycles screens.



Press and hold for 2s to disable / enable the display.

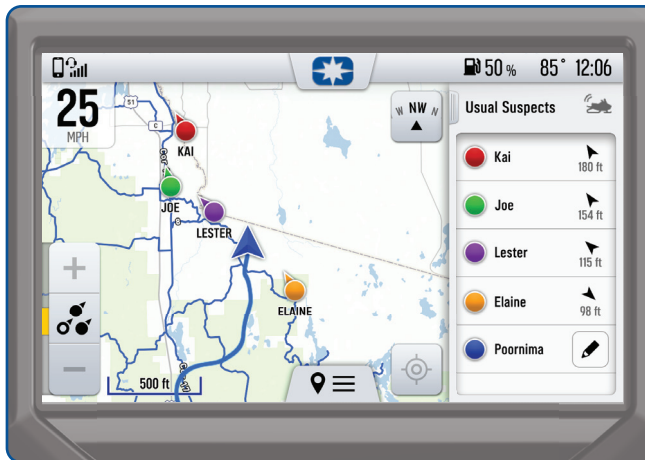
### Digital / Analog

Tap to toggle between analog and digital speedometer display styles.

### Customize

Tap to customize up to four gauge screens and choose the ride and vehicle information for each.







## Group Ride

Group Ride shows the live location of riders in your group.

To create a ride group:

- 1 Go to the map.
- 2 Tap   at the bottom of your display.
- 3 Tap "Group Ride."
- 4 Follow instructions to setup a V2V or mobile phone group ride.

## Update Software


### On your Personal Computer

- 1 Go to [ridecommand.polaris.com](http://ridecommand.polaris.com)
- 2 Log in or create a new account.
- 3 Using the Vehicle Identification Number (VIN), add your new Polaris vehicle to the garage.
- 4 In the *Garage* area, find *Map & Software Updates*, and download the latest software update to a USB drive.

### On your Vehicle

- 5 Connect the USB drive to the USB cable and power up your vehicle.
- 6 On the vehicle display, go to settings by pressing the Polaris logo button and tapping *Settings*.
- 7 Tap *General Settings*, then *Update Software*.
- 8 Tap the software update file in the list.
- 9 Tap *Install* to confirm and restart the display.

## Apps & Controls

Tap  to access all apps, vehicle controls, and settings.

## Maps

Maps with your waypoints and tracked rides, navigation, and join a group ride with friends.

## Music

USB and Bluetooth media streaming.

## Phone

Connect your phone or headset via Bluetooth to make phone calls and send messages.

