

TRACK ANALYSIS

TRAIL DAMAGE



DESCRIPTION:

Track lug damaged, cut or worn.

CAUSE:

Track overheats by running at high speed or on hard pack snow.
Track damaged by spinning on rocks, stumps or other hard objects.

RECOMMENDATIONS:

Avoid spinning track on low or no snow conditions. Do not run at high speeds over long distances or extended periods of time. This is especially important in conditions with minimal cooling and lubrication, or when operating a track with a 1.0" or higher profile.

WARRANTY: ☒ NO ☐ YES

CLIP DAMAGE



DESCRIPTION:

Track clips appear to have a blue tint. Rail sliders build up on the clips.

CAUSE:

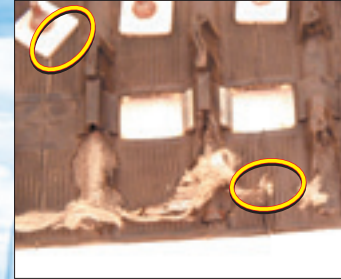
Track spinning on gravel, pavement, ice or hard surfaces.
Track is run at high speeds over long distances, or extended periods of time.
Lack of lubrication or cooling on slides and clips.

RECOMMENDATIONS:

Avoid running in conditions with minimal snow, or hard surfaces for extended periods of time.

WARRANTY: ☒ NO ☐ YES

STUD DAMAGE



DESCRIPTION:

Traction products have been added to increase traction.

CAUSE:

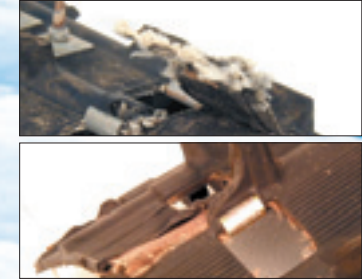
Improperly placed traction product installed on track traction product not placed in the center of the outside feet of track.
Incorrect size of traction product installed on track.
Traction product backing plate orientation incorrect, causing backing plate to cut into the track.

RECOMMENDATIONS:

Frequently check traction products for correct mounting.

WARRANTY: ☒ NO ☐ YES

IMPACT DAMAGE



DESCRIPTION:

Track cords are frayed and showing, sometimes exposing the rod.

CAUSE:

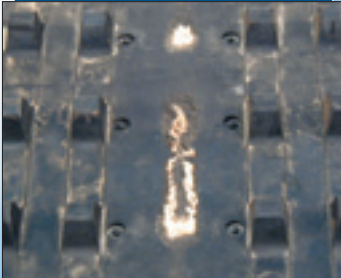
Track damaged by rocks, stumps or hitting hard objects.

RECOMMENDATIONS:

Avoid riding in conditions with minimal snow, or hard surfaces and objects.

WARRANTY: ☒ NO ☐ YES

SUSPENSION DAMAGE



DESCRIPTION:

Excessive wear and/or damage on the inside of the track or on the drive lugs. A dull finish is usually on the areas where friction and wear has occurred.

CAUSE:

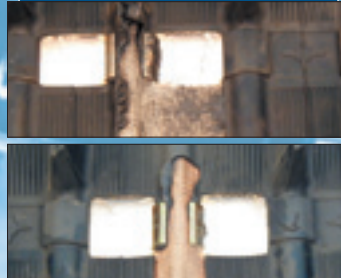
Improper installation of rail sliders, suspension wheels, or drivers.
Suspension misaligned, or damaged.
Failed suspension wheel bearings.

RECOMMENDATIONS:

Frequent suspension inspection. Check track tension frequently.
Check suspension wheel bearings.

WARRANTY: ☒ NO ☐ YES

OVERHEAT DAMAGE



DESCRIPTION:

Track lugs missing or section of rubber on track exposing webbing and rods.

CAUSE:

Track is run at high speeds over long distances, or extended periods of time.
Lack of lubrication or cooling on slides and clips.

RECOMMENDATIONS:

Avoid running in conditions with minimal snow, or hard surfaces for extended periods of time.

WARRANTY: ☒ NO ☐ YES

DEEP SNOW DAMAGE



DESCRIPTION:

Cut, torn, damaged or missing track lug.

CAUSE:

Track damaged by spinning on rocks, stumps or other hard objects.

RECOMMENDATIONS:

Avoid spinning track on low or no snow conditions. Do not run at high speeds over long distances or extended periods of time. This is especially important in conditions with minimal cooling and lubrication, or when operating a track with a 1.0" or higher profile.

WARRANTY: ☒ NO ☐ YES

EXTERNAL LUG DAMAGE



DESCRIPTION:

Tear on the lug caused by a sharp object, or prolonged bending of the lug.

CAUSE:

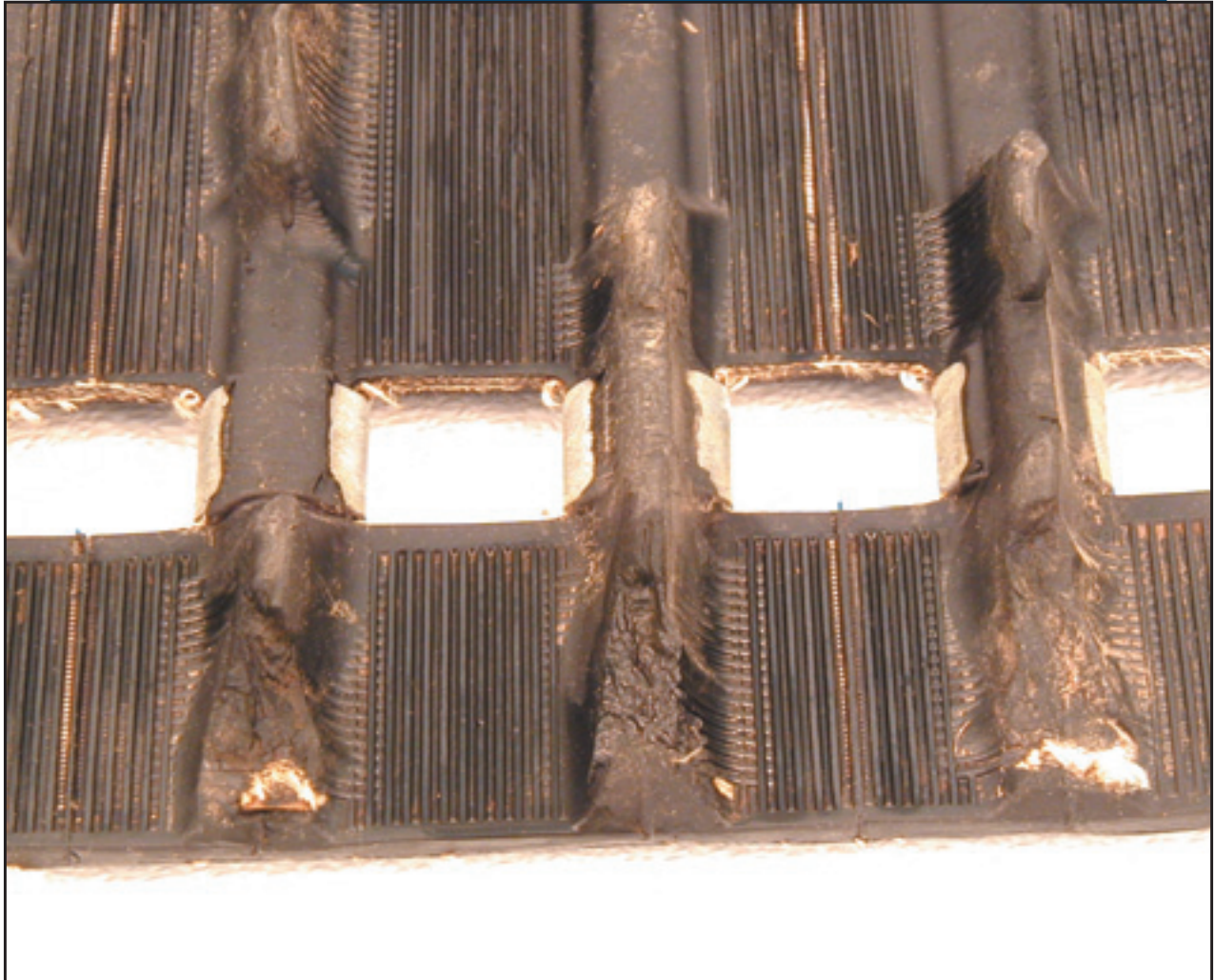
Track spinning on gravel, pavement, ice or hard surfaces.
Track damaged by rocks, stumps, or hard objects.

RECOMMENDATIONS:

Avoid spinning track on low or no snow conditions. Do not run at high speeds over long distances or extended periods of time. This is especially important in conditions with minimal cooling and lubrication, or when operating a track with a 1.0" or higher profile.

WARRANTY: ☒ NO ☐ YES

TRAIL DAMAGE



DESCRIPTION:

Track lug damaged, cut or worn.

CAUSE:

Track overheats by running at high speed or on hard pack snow.
Track damaged by spinning on rocks, stumps or other hard objects.

RECOMMENDATIONS:

Avoid spinning track on low or no snow conditions. Do not run at high speeds over long distances or extended periods of time. This is especially important in conditions with minimal cooling and lubrication, or when operating a track with a 1.0" or higher profile.

WARRANTY:



NO



YES

Return to MAIN PAGE

CLIP DAMAGE



DESCRIPTION:

Track clips appear to have a blue tint. Rail sliders build up on the clips.

CAUSE:

Track spinning on gravel, pavement, ice or hard surfaces.
Track is run at high speeds over long distances, or extended periods of time.
Lack of lubrication or cooling on slides and clips.

RECOMMENDATIONS:

Avoid running in conditions with minimal snow, or hard surfaces for extended periods of time.

WARRANTY:



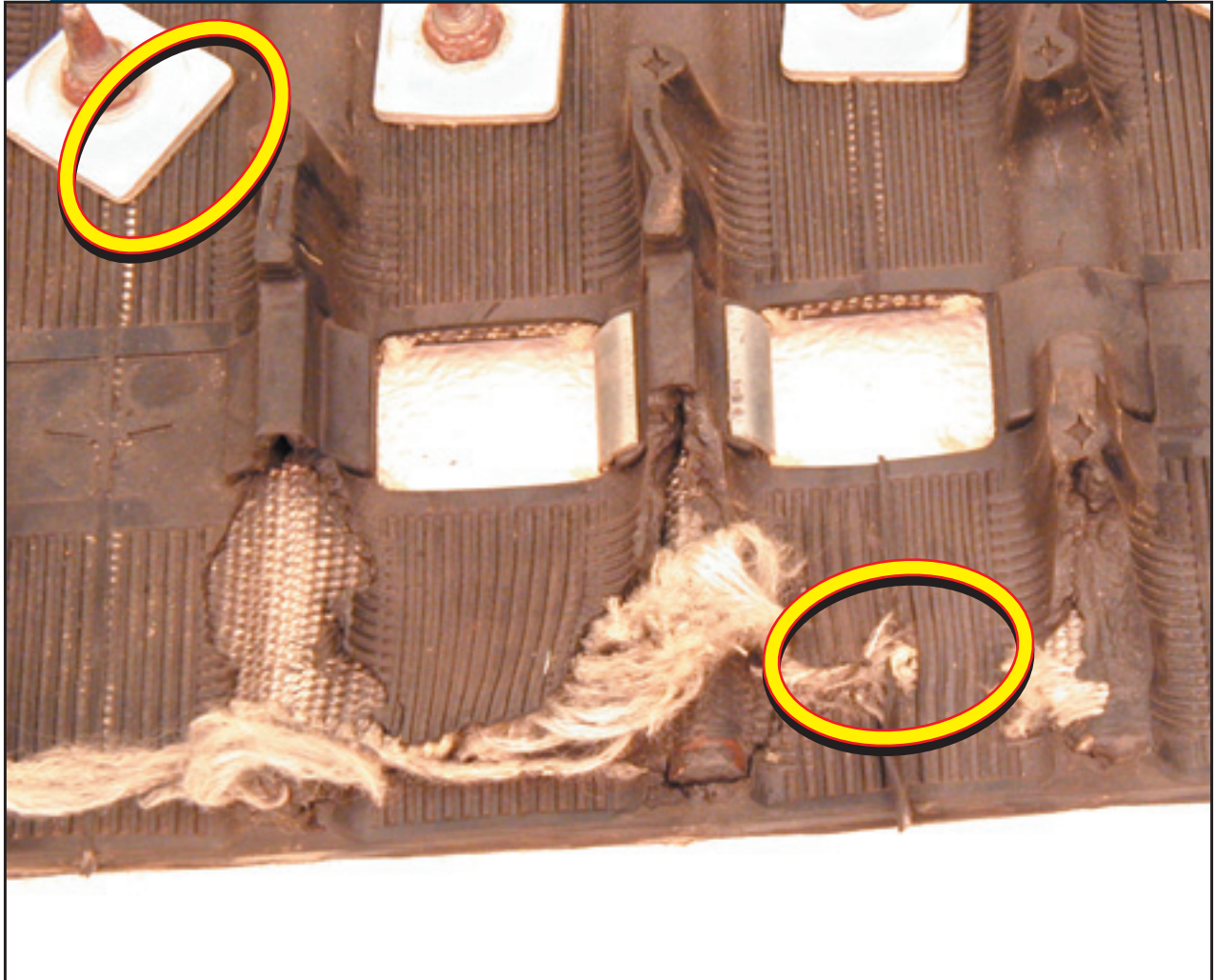
NO



YES

Return to MAIN PAGE

STUD DAMAGE



DESCRIPTION:

Traction products have been added to increase traction.

CAUSE:

Incorrectly placed traction product installed on track (traction product not placed in the center of the outside belt of track).

Incorrect size of traction product installed on track.

Traction product backing plate orientation incorrect, causing backing plate to cut into the track.

RECOMMENDATIONS:

Frequently check traction products for correct mounting.

WARRANTY:



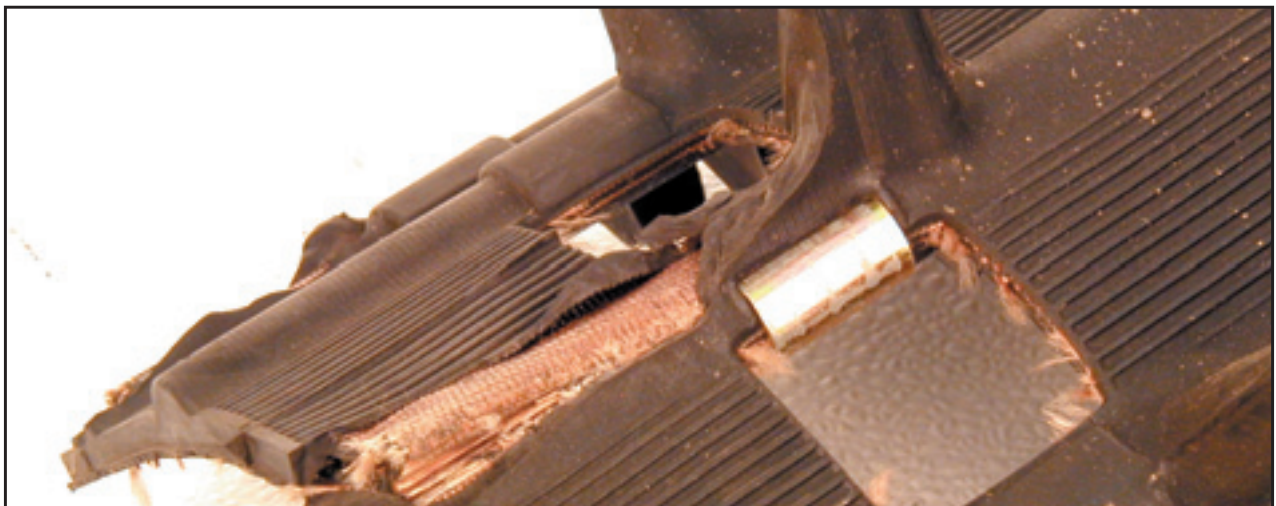
NO



YES

Return to MAIN PAGE

IMPACT DAMAGE



DESCRIPTION:

Track cords are frayed and showing, sometimes exposing the rod.

CAUSE:

Track damaged by rocks, stumps or hitting hard objects.

RECOMMENDATIONS:

Avoid riding in conditions with minimal snow, or hard surfaces and objects.

WARRANTY:



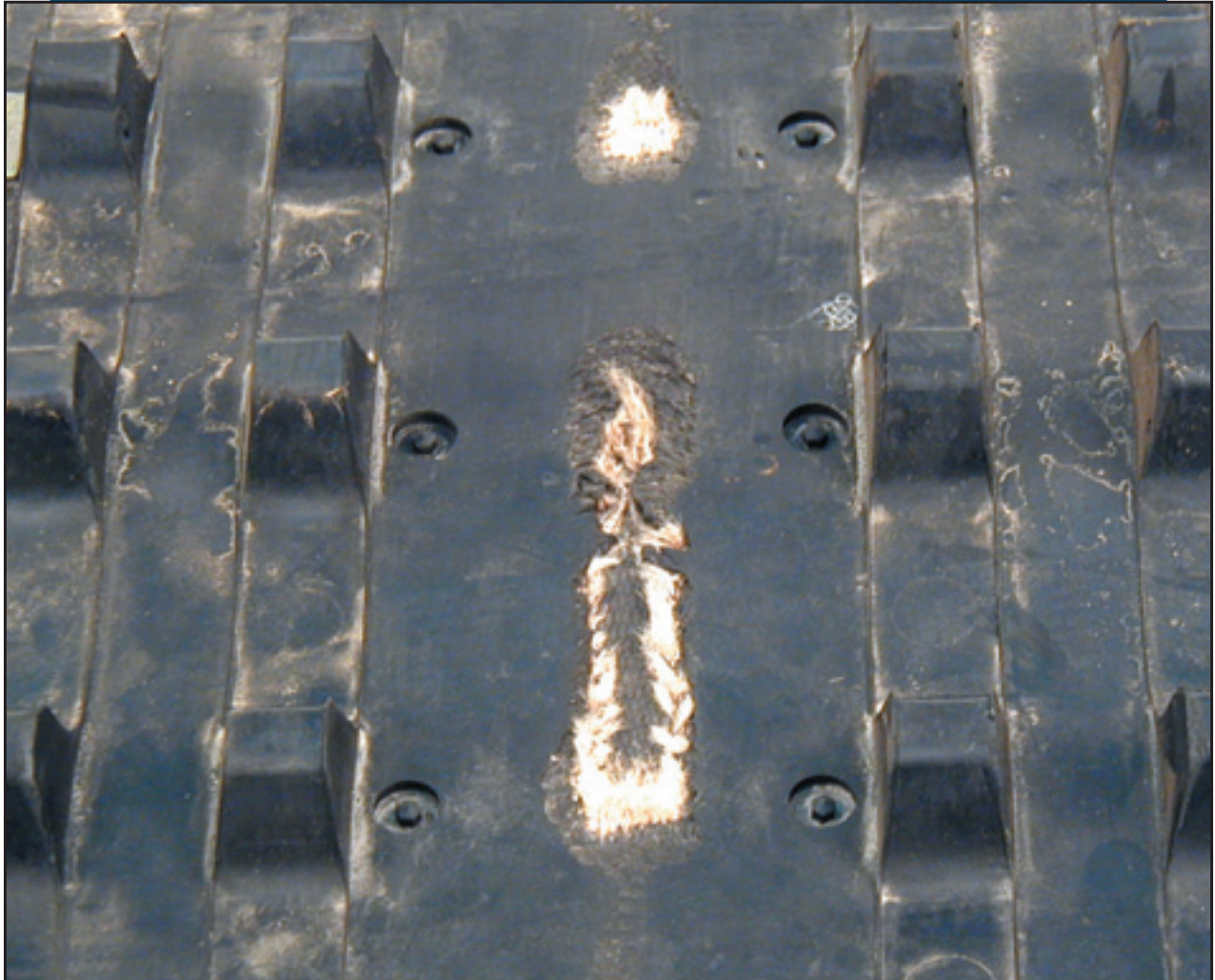
NO



YES

Return to MAIN PAGE

SUSPENSION DAMAGE

**DESCRIPTION:**

Excessive wear and/or damage on the inside of the track or on the drive lugs. A dull finish is usually on the areas where friction and wear has occurred.

CAUSE:

Improper installation of rail sliders, suspension wheels, or drivers.
Suspension misaligned, or damaged.
Failed suspension wheel bearings.

RECOMMENDATIONS:

Frequent suspension inspection. Check track tension frequently.
Check suspension wheel bearings.

WARRANTY:



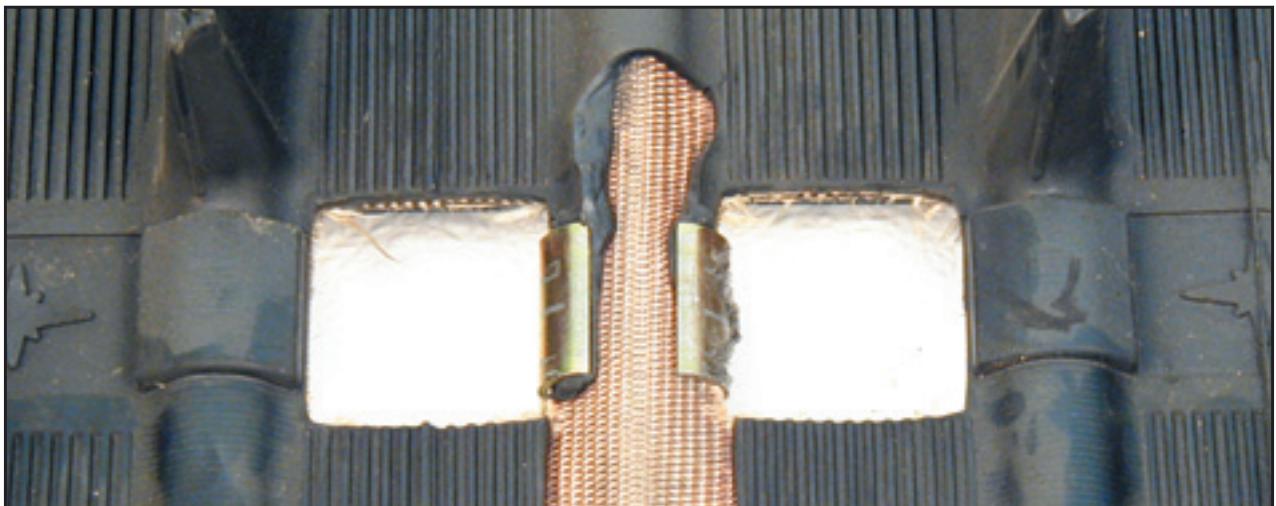
NO



YES

Return to MAIN PAGE

OVERHEAT DAMAGE



DESCRIPTION:

Track lugs missing or section of rubber on track exposing webbing and rods.

CAUSE:

Track is run at high speeds over long distances, or extended periods of time.
Lack of lubrication or cooling on slides and clips.

RECOMMENDATIONS:

Avoid running in conditions with minimal snow, or hard surfaces for extended periods of time.

WARRANTY: ☒ NO ☐ YES

Return to MAIN PAGE

DEEP SNOW DAMAGE

**DESCRIPTION:**

Cut, torn, damaged or missing track lug.

CAUSE:

Track damaged by spinning on rocks, stumps or other hard objects.

RECOMMENDATIONS:

Avoid spinning track on low or no snow conditions. Do not run at high speeds over long distances or extended periods of time. This is especially important in conditions with minimal cooling and lubrication, or when operating a track with a 1.0" or higher profile.

WARRANTY: ☒ NO ☐ YES

Return to MAIN PAGE

EXTERNAL LUG DAMAGE



DESCRIPTION:

Tear on the lug caused by a sharp object, or prolonged bending of the lug.

CAUSE:

Track spinning on gravel, pavement, ice or hard surfaces.
Track damaged by rocks, stumps, or hard objects.

RECOMMENDATIONS:

Avoid spinning track on low or no snow conditions. Do not run at high speeds over long distances or extended periods of time. This is especially important in conditions with minimal cooling and lubrication, or when operating a track with a 1.0" or higher profile.

WARRANTY:



NO



YES

Return to MAIN PAGE